

# NATIONAL ORGANIZATION SONS OF UNION VETERANS OF THE CIVIL WAR CIVIL WAR MEMORIAL ASSESSMENT FORM

**Type of Memorial (check all applicable)**

☒ Monument ☐ with Sculpture ☐ without Sculpture ☐ with Cannon ☐ standalone Cannon  
☐ Historical Marker ☐ Plaque ☐ Other ( flag pole, G.A.R. buildings, stained glass windows, etc.)

**Affiliation**

☐ GAR ☐ MOLLUS ☐ SUVCW ☐ WRC ☐ ASUVCW  
☐ LGAR ☐ DUVCW ☐ Other None

If known, record name and number of post, camp, corps, auxiliary, tent, circle or appropriate information of other groups:

Not affiliated by any of these groups. A project of historian Gerald LeBlanc.

**Original Dedication Date** 1994-95 Please consult any/all newspaper archives for a local paper's article that would have information on the first dedication ceremony and/or other facts on the memorial. Please submit a copy of your findings with full identification of the paper & date of publication. Thank you.

An inscription says dedicated by Olive Elementary students of 1994-95

**Location**

The Memorial is currently located at:

Street/Road address or site location Woodland Cemetery  
2019 Woodland Avenue GPS Coordinates 41.588883 - 93.646783  
 City/Village &/or Township Des Moines  
 County Polk State Iowa Zip Code 50312

The front of the Memorial faces: ☐ North ☒ South ☐ East ☐ West

located in the South GAR section of cemetery

**Government Body, Agency, or Individual Owner**

Name City of Des Moines  
 Dept./Div. Park and Recreation  
 Street Address 1551 E. MLK, Jr. Parkway  
 City Des Moines State Iowa Zip Code 50317  
 Contact Person \_\_\_\_\_ Telephone (515) 248-6320 ext \_\_\_\_\_

Is Memorial on the National Register of Historic Places ☐ Yes ☒ No ID # if known \_\_\_\_\_

**For Monuments with/without sculpture:****Physical Details**

Material of Monument or base under a Sculpture or Cannon = ☐ Stone ☒ Concrete ☐ Metal ☐ Other

If known, name specific material (color of granite, marble, etc.) \_\_\_\_\_

Material of the Sculpture ☒ Stone ☐ Concrete ☐ Metal ☐ Other Is it hollow or solid? \_\_\_\_\_

If known, name specific material (color of granite, marble, etc.) gray granite

**For Historic Marker or Plaque:**

Material of Plaque or Historical Marker / Tablet = \_\_\_\_\_

**For Cannons with/without monument:**

Material of Cannon = \_\_\_\_\_ Bronze \_\_\_\_\_ Iron Type of Cannon (if known) \_\_\_\_\_ Rifled \_\_\_\_\_ YES \_\_\_\_\_ NO

Markings: Muzzle \_\_\_\_\_ Base Ring/Breech \_\_\_\_\_

Left Trunion \_\_\_\_\_ Right Trunion \_\_\_\_\_

Is inert ammunition a part of the Memorial? \_\_\_\_\_ Yes \_\_\_\_\_ No

[For camp/department monuments officer's use: Cannon on list of known ordnance] \_\_\_\_\_ Yes \_\_\_\_\_ No

**For Other Memorials:** (flag pole, G.A.R. buildings, stained glass windows, etc.)

What best describes the memorial \_\_\_\_\_

Materials of the Memorial \_\_\_\_\_

**Complete for All Memorials****Approximate Dimensions** (indicate unit of measure) - taken from tallest / widest points

\_\_\_\_\_ 30" Height \_\_\_\_\_ 8" Width \_\_\_\_\_ 42" Depth or \_\_\_\_\_ Diameter

For Memorials with multiple Sculptures, please record this information on a separate sheet of paper for each statue (service, pose, etc) and attach to this form. Please describe the "pose" of each statue and any weapons/implements involved (in case your photos become separated from this form). Thank you!

**Markings/Inscriptions** (on stone-work / metal-work of monument, base, sculpture)

Maker or Fabricator mark / name? If so, give name &amp; location found \_\_\_\_\_

Please attach legible photographs of all text &amp;/or Record the text in the space below. Please use the addendum – narrative sheet if necessary.

See photo. Also included are photos of tombstones of these generals but they are not to be considered CW monuments. On back of monument is an inscription indicating "Dedicated by Clove Elementary Students of 1994-1995."

**Environmental Setting**

(The general vicinity and immediate locale surrounding a memorial can play a major role in its overall condition.)

**Type of Location**

☒ Cemetery    ☐ Park    ☐ Plaza/Courtyard    ☐ "Town Square"    ☐ Post Office  
☐ School    ☐ Municipal Building    ☐ State Capitol    ☐ Courthouse    ☐ College Campus  
☐ Traffic Circle    ☐ Library    Other: \_\_\_\_\_

**General Vicinity**

☐ Rural (low population, open land)    ☐ Suburban (residential, near city)    ☐ Town    ☒ Urban / Metropolitan

**Immediate Locale** (check as many as may apply)

☐ Industrial    ☐ Commercial    ☐ Street/Roadside within 20 feet    ☒ Tree Covered (overhanging branches)  
☐ Protected from the elements (canopy or enclosure, indoors)    ☐ Protected from the public (fence or other barrier)

Any other significant environmental factor \_\_\_\_\_

[To detail the condition of a monument used the addendum form for *Monument's Condition*]**Supplemental Background Information**

In addition to your on-site survey, any additional information you can provide on the described Memorial will be welcomed. Please label each account with its source (author, title, publisher, date, pages). Topics include any reference to the points listed on this questionnaire, plus any previous conservation treatments - or efforts to raise money for treatment.

Addendums attached to this electronic file are the *Monument's Condition* and the *Narrative* forms. Only the *Monument's Condition* form is required if you are requesting grant money using form CWM-62 *SUVCW Memorial Grant Application Form and Instructions*.

Thank you.

monument in good condition

Inspector Identification

Date of On-site Survey

October 17, 2016

Your Name Tom Gaard

il gaardt@aol.com

Are you a member of the Allied Orders of the G.A.R.? If so, which one?

SUVCW Greenville Dodge Camp #75

Please send this completed form to:

Walt Busch, PDC, Chair  
 1240 Konert Valley Dr.  
 Fenton, MO 63026

Thank you for your help, and attention to detail.

**SONS OF UNION VETERANS OF THE CIVIL WAR – CIVIL WAR MEMORIALS COMMITTEE.**

## Department of Iowa - Civil War Monuments Polk County - Des Moines

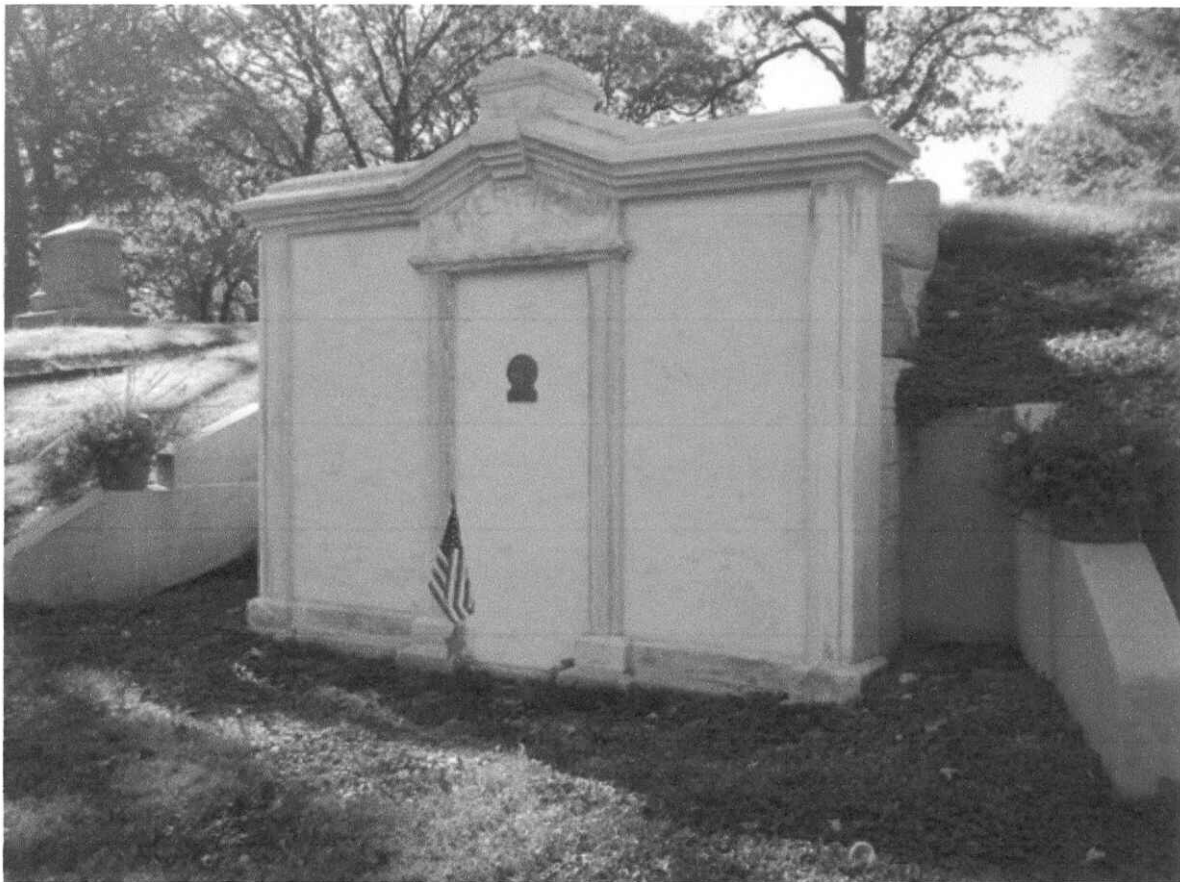
### Civil War Generals Woodland Cemetery

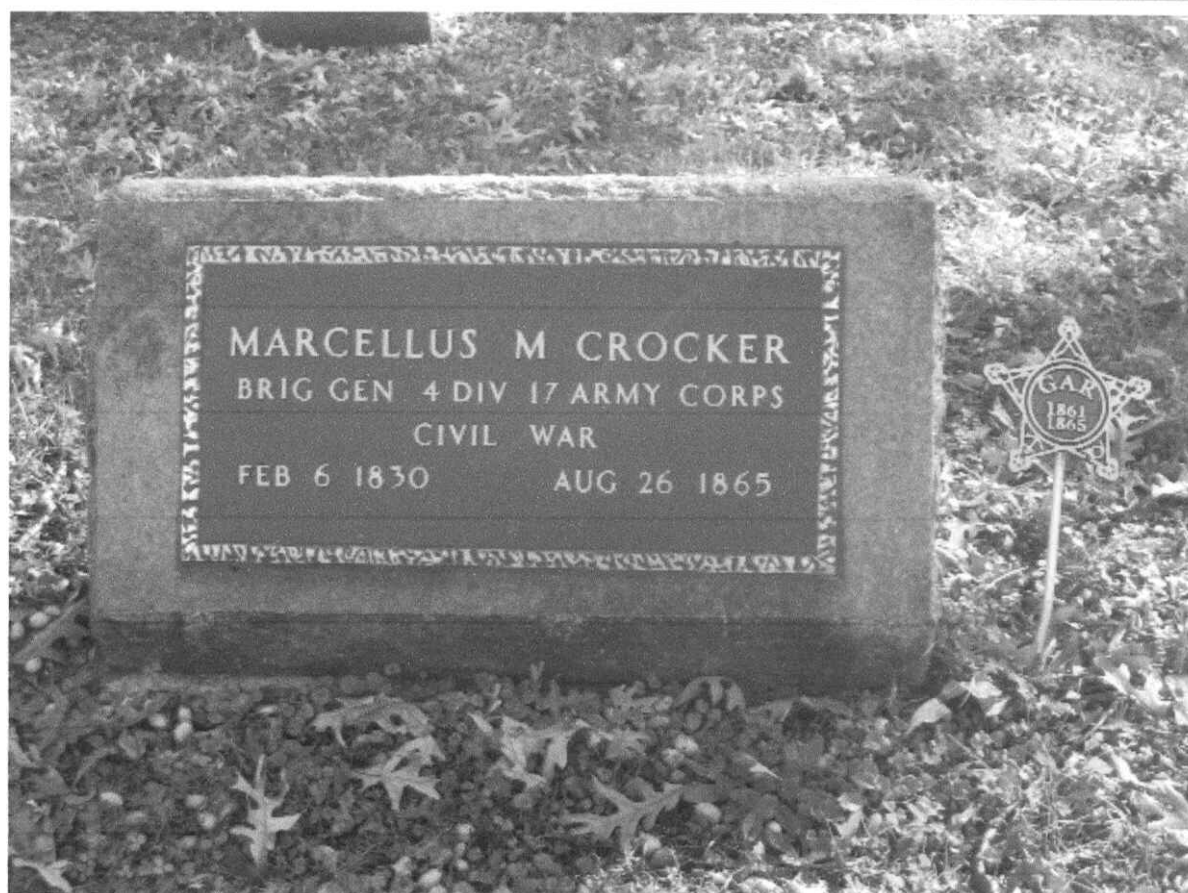
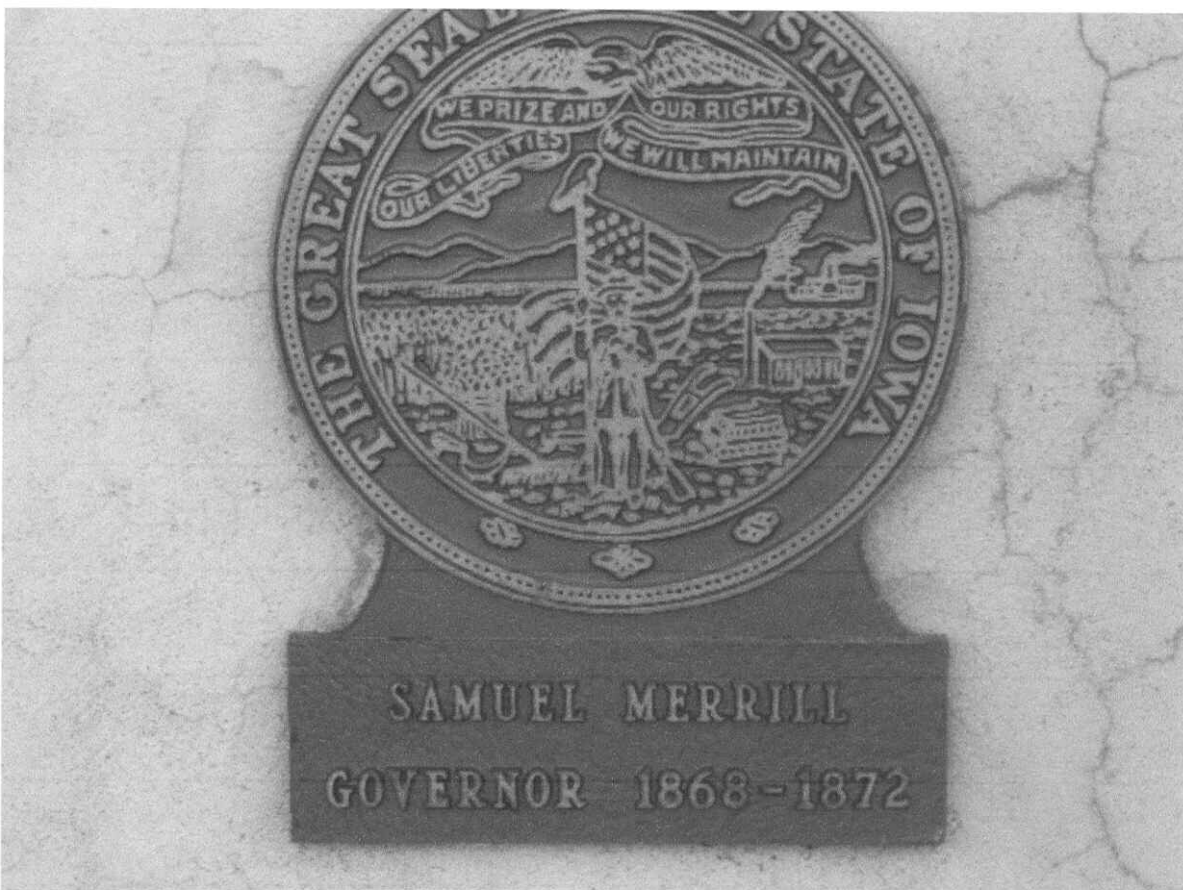
This is a small granite monument in the south GAR section of Woodland Cemetery in Des Moines, Iowa. It honors four Iowa generals buried in the cemetery. On the back is an inscription indicating the monument was dedicated by students of the Clive Elementary School in 1994-1995.

Also shown are the gravestones for Generals Tuttle, Merrill and Crocker. The large memorial for General Baker is shown as a separate monument. General James Tuttle's tombstone is in block 6 about 50 yards west of the Hoyt Sherman mausoleum. General Merrill's tomb is built into the side of a hill. It had been in poor condition and was restored in 2016. It is in block 14. The plaque shows that he was Governor from 1868-72. General Crocker's original memorial - see newspaper photo - had deteriorated and was replaced with a more modern marker about 1990. It is more difficult to find - it is in block 6 about 50 yards north of the Hoyt Sherman mausoleum. Photos were taken 10/31/08 - the photo of Merrill was taken 10/19/16.

There is also a 5th General with a brevet rank that could have been included. General James B. Weaver is buried in Block 23 - Lot 52 located near the west edge of the cemetery. These photos, taken 7/27/09, are included below. See his home and a plaque in Davis County which are listed as a separate monument. There is also more information about him. The GPS coordinates for this monument in Woodland Cemetery are 41 35.368 -93 38.964









REGISTER FILE PHOTO

Some of the 50 people who participated in a May 27, 1963, tour of Woodland Cemetery view the grave marker of Civil War Gen. Marcellus M. Crocker, who was a Des Moines lawyer when he entered the war. The tour was sponsored by the public schools' Department of Adult Education and the Polk County Historical Society.

