

NATIONAL ORGANIZATION
SONS OF UNION VETERANS OF THE CIVIL WAR
CIVIL WAR MEMORIAL ASSESSMENT FORM

Type of Memorial (check all applicable)

Monument with Sculpture without Sculpture with Cannon standalone Cannon
 Historical Marker Plaque Other (flag pole, G.A.R. buildings, stained glass windows, etc.)

Affiliation

GAR MOLLUS SUVCW WRC ASUVCW
 LGAR DUVCW Other

GAR Jason Ferguson #31 had possession of cannon - gifted to Story County
If known, record name and number of post, camp, corps, auxiliary, tent, circle or appropriate information of other groups:

Dedication of the Gettysburg Address plaque was by the WRC in 1930. Dedication of Cannon Unknown.

Original Dedication Date 1930 Please consult any/all newspaper archives for a local paper's article that would have information on the first dedication ceremony and/or other facts on the memorial. Please submit a copy of your findings with full identification of the paper & date of publication. Thank you.

Location The monument dedication ~~for the~~ was June 14, 2013 with SUVCW members participating

The Memorial is currently located at:
Street/Road address or site location Story County Courthouse
J Ave + 5th St. GPS Coordinates 42.020483 -93.453166
City/Village &/or Township Nevada
County Story State Iowa Zip Code 50201

The front of the Memorial faces: North South East West

Government Body, Agency, or Individual Owner

Name Story County
Dept./Div. Auditor
Street Address 900 6th St.
City Nevada State Iowa Zip Code 50201
Contact Person _____ Telephone (515) 382-7210 ext _____

Is Memorial on the National Register of Historic Places Yes No ID # if known _____

For Monuments with/without sculpture:

Physical Details

Material of Monument or base under a Sculpture or Cannon = Stone Concrete Metal Other
If known, name specific material (color of granite, marble, etc.) gray and red granite

Material of the Sculpture Stone Concrete Metal Other Is it hollow or solid? _____
If known, name specific material (color of granite, marble, etc.) _____

For Historic Marker or Plaque:Material of Plaque or Historical Marker / Tablet = brass**For Cannons with/without monument:** Confederate bronze rifled cannon -Material of Cannon = Bronze Iron Type of Cannon (if known) see attached for detail
Rifled YES NOMarkings: Muzzle Base Ring/Breech Left Trunion Right Trunion Is inert ammunition a part of the Memorial? Yes ✓ No[For camp/department monuments officer's use: Cannon on list of known ordnance] ✓ Yes No**For Other Memorials:** (flag pole, G.A.R. buildings, stained glass windows, etc.)

What best describes the memorial

Materials of the Memorial

Complete for All Memorials**Approximate Dimensions** (indicate unit of measure) - taken from tallest / widest points20" Height 25" Width Depth or DiameterG'burg Address plaque 24"x24"
For Memorials with multiple Sculptures, please record this information on a separate sheet of paper for each statue (service, pose, etc) and attach to this form. Please describe the "pose" of each statue and any weapons/implements involved (in case your photos become separated from this form). Thank you!**Markings/Inscriptions** (on stone-work / metal-work of monument, base, sculpture)

Maker or Fabricator mark / name? If so, give name & location found

Please attach legible photographs of all text &/or Record the text in the space below. Please use the addendum - narrative sheet if necessary.

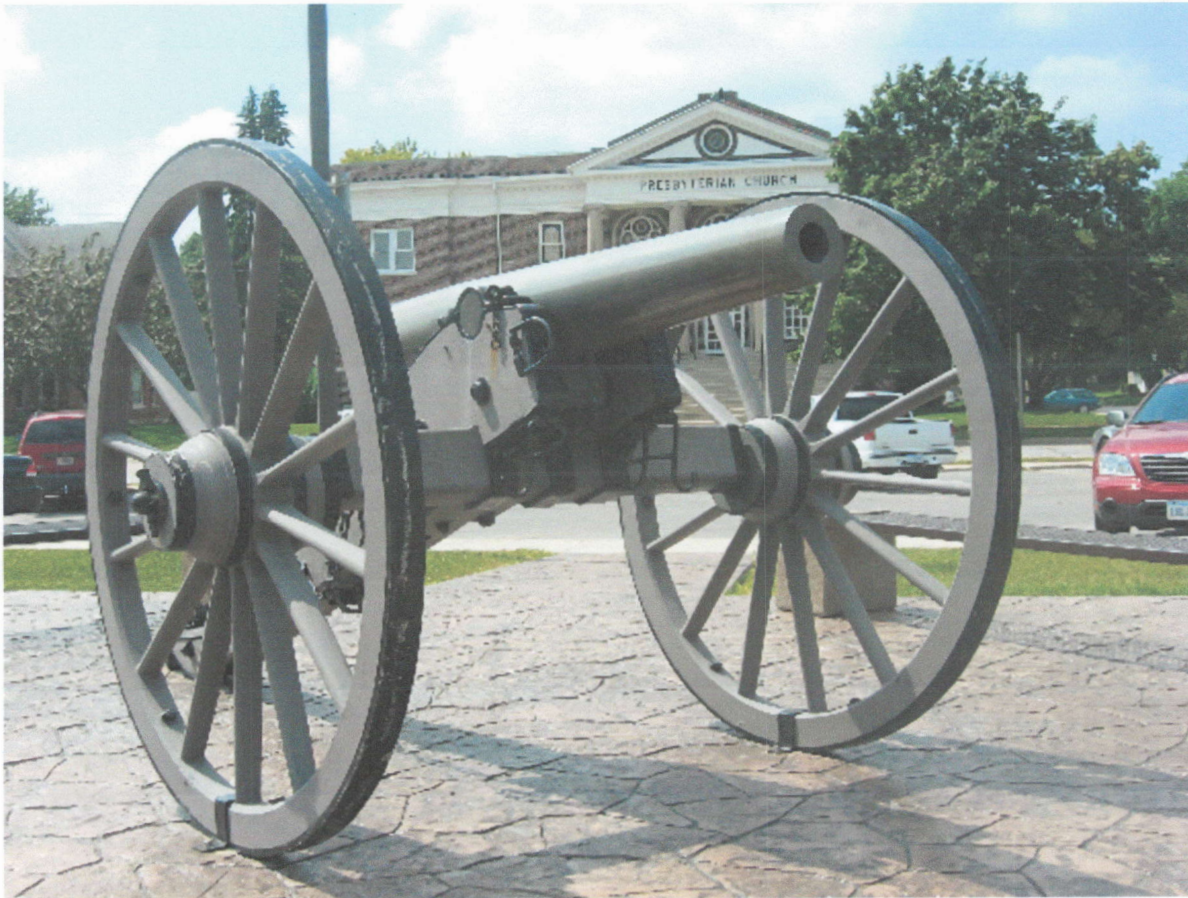
see attached photos
Also page from Dennis Bresson's "Iowa CW Cannons"

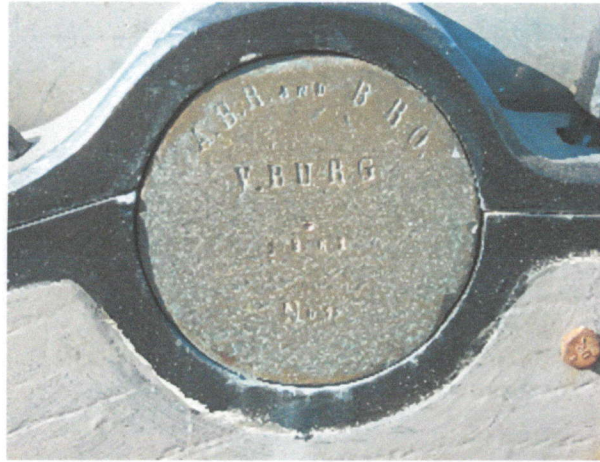
Department of Iowa - Civil War Monuments Story County - Nevada

Confederate Cannon, Monument and Gettysburg Address Plaque

This 3 inch Confederate bronze rifled cannon was cast at the A. B. Reading and Brother foundry in Vicksburg in 1861. It is the "No 1" of this design manufactured there. The cannon and carriage are in excellent condition. The final Yankee victim occurred in 1918 celebrating Armistice Day – one of the celebrators was accidentally killed when the cannon was fired. The Gettysburg Address plaque was dedicated by the WRC in 1930. Originally the cannon and plaque were together but were separated when the old courthouse was replaced about 25 years ago.

On Flag Day, 2013, an impressive ceremony was held to dedicate the new monument and re-dedicate the canon and Gettysburg Address plaque. The monument is dedicated to Lt. Jason Ferguson of Company D, 12th Iowa Infantry. He was from Nevada and died of wounds at the Battle of Shiloh. He was the first fatality from Story County. The courthouse is located just south of the business district. Photos taken 11/15/07, 8/28/08 and 6/14/13.





**Nevada
Courthouse Lawn**

**Confederate bronze rifle.
Made by A.B. Reading and Bro., Vicksburg, Miss.
6 groove, 3 inch bore.
65 ½ inches long.
Cannon No. 1, Made in 1861.
Trunnion dia. of 3.62 in. by 2.75 in. long.
No other markings, looks like muzzle has been cut back
and muzzle sight has been moved.
Cannon facing northeast.**

