

NATIONAL ORGANIZATION
SONS OF UNION VETERANS OF THE CIVIL WAR
CIVIL WAR MEMORIAL ASSESSMENT FORM

Type of Memorial (check all applicable)

Monument with Sculpture without Sculpture with Cannon standalone Cannon
Historical Marker Plaque Other (flag pole, G.A.R. buildings, stained glass windows, etc.)

Affiliation

GAR MOLLUS SUVCW WRC ASUVCW
LGAR DUVCW Other

If known, record name and number of post, camp, corps, auxiliary, tent, circle or appropriate information of other groups:
The Native Sons and Daughters of Greater Kansas City

Original Dedication Date Original around 1965 Please consult any/all newspaper archives for a local paper's article that would have information on the first dedication ceremony and/or other facts on the memorial. Please submit a copy of your findings with full identification of the paper & date of publication. Thank you.

Location

The Memorial is currently located at:

Street/Road address or site location Grand Ave Near Truman Road (SW Corner)
1425 Grand Ave GPS Coordinates N39.0962° W94.58093°

City/Village &/or Township Kansas City

County Jackson State MO Zip Code 64108

The front of the Memorial faces: North South East West

Government Body, Agency, or Individual Owner

Name The Native Sons and Daughters of Greater Kansas City

Dept./Div.

Street Address P. O. Box 25513

City Kansas City State MO 64119-5513 Zip Code

Contact Person admin@nsdkc.org Telephone (816) 278-8929 ext

Is Memorial on the National Register of Historic Places Yes No ID # if known

For Monuments with/without sculpture:

Physical Details

Material of Monument or base under a Sculpture or Cannon = Stone Concrete Metal Other

If known, name specific material (color of granite, marble, etc.)

Material of the Sculpture Stone Concrete Metal Other Is it hollow or solid?

If known, name specific material (color of granite, marble, etc.)

For Historic Marker or Plaque:Material of Plaque or Historical Marker / Tablet = Aluminum on aluminum post**For Cannons with/without monument:**Material of Cannon = Bronze Iron Type of Cannon (if known) _____Rifled YES NO

Markings: Muzzle _____ Base Ring/Breech _____

Left Trunion _____ Right Trunion _____

Is inert ammunition a part of the Memorial? Yes No[For camp/department monuments officer's use: Cannon on list of known ordnance] Yes No**For Other Memorials:** (flag pole, G.A.R. buildings, stained glass windows, etc.)

What best describes the memorial

Materials of the Memorial

Complete for All Memorials**Approximate Dimensions** (indicate unit of measure) - taken from tallest / widest points6' Height 24" Width 4" Depth or _____ Diameter

For Memorials with multiple Sculptures, please record this information on a separate sheet of paper for each statue (service, pose, etc) and attach to this form. Please describe the "pose" of each statue and any weapons/implements involved (in case your photos become separated from this form). Thank you!

Markings/Inscriptions (on stone-work / metal-work of monument, base, sculpture)

Maker or Fabricator mark / name? If so, give name & location found

Please attach legible photographs of all text &/or Record the text in the space below. Please use the addendum – narrative sheet if necessary.

[SEE ATTACHED PHOTOS](#)

Environmental Setting

(The general vicinity and immediate locale surrounding a memorial can play a major role in its overall condition.)

Type of Location

Cemetery Park Plaza/Courtyard "Town Square" Post Office
 School Municipal Building State Capitol Courthouse College Campus
 Traffic Circle Library Other: _____

General Vicinity

Rural (low population, open land) Suburban (residential, near city) Town Urban / Metropolitan

Immediate Locale (check as many as may apply)

Industrial Commercial Street/Roadside within 20 feet Tree Covered (overhanging branches)
 Protected from the elements (canopy or enclosure, indoors) Protected from the public (fence or other barrier)

Any other significant environmental factor _____

[To detail the condition of a monument used the addendum form for *Monument's Condition*]

Supplemental Background Information

In addition to your on-site survey, any additional information you can provide on the described Memorial will be welcomed. Please label each account with its source (author, title, publisher, date, pages). Topics include any reference to the points listed on this questionnaire, plus any previous conservation treatments - or efforts to raise money for treatment.

Addendums attached to this electronic file are the *Monument's Condition* and the *Narrative* forms. Only the *Monument's Condition* form is required if you are requesting grant money using form CWM-62 *SUVCW Memorial Grant Application Form and Instructions*.

Thank you.

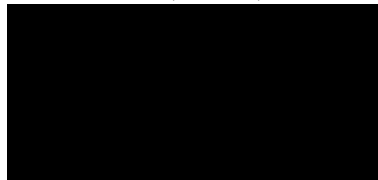
Inspector Identification _____ Date of On-site Survey 04/01/2022
Your Name Brian Smarker, PDC
Address _____
City _____ State _____ Zip Code _____
Telephone () _____ E-Mail _____

Are you a member of the Allied Orders of the G.A.R.? If so, which one?

Westport Camp #64, MO SUVCW

Please send this completed form to:

Walt Busch, PDC, Chair



Thank you for your help, and attention to detail.

SONS OF UNION VETERANS OF THE CIVIL WAR – CIVIL WAR MEMORIALS COMMITTEE.

**SONS OF UNION VETERANS OF THE CIVIL WAR
CIVIL WAR MEMORIAL ASSESSMENT FORM
ADDENDUM – MONUMENT’S CONDITION**

Completion of this form is required when requesting grant money using form CWM-62 *SUVCW Memorial Grant Application Form and Instructions.*

Condition Information

Structural Condition (check as many as may apply)

The following section applies to Monuments with Sculpture, and Monuments without Sculpture including the base for Monuments with Cannon. Instability in the sculpture and its base can be detected by a number of factors. Indicators may be obvious or subtle. Visually examine the sculpture and its base.

	Sculpture	Base
If hollow, is the internal support unstable/exposed? <small>(Look for signs of exterior rust)</small>	_____	_____
Any evidence of structural instability? <small>(Look for cracked joints, missing mortar or caulking or plant growth)</small>	_____	_____
Any broken or missing parts? <small>(Look for elements (i.e., sword, musket, hands, arms, etc. - missing due to vandalism, fluctuating weather conditions, etc.)</small>	_____	_____
Any cracks, splits, breaks or holes? <small>(Also look for signs of uneven stress & weakness in the material)</small>	_____	_____

Surface Appearance (check as many as may apply)

	Sculpture	Base
Black crusting	_____	_____
White crusting	_____	_____
Etched, pitted, or otherwise corroded (on metal)	_____	_____
Metallic staining (run-off from copper, iron, etc.)	_____	_____
Organic growth (moss, algae, lichen or vines)	_____	_____
Chalky or powdery stone	_____	_____
Granular eroding of stone	_____	_____
Spalling of stone (surface splitting off)	_____	_____
Droppings (bird, animal, insect remains)	_____	_____
Other (e.g., spray paint graffiti) - Please describe...	_____	_____

Does water collect in recessed areas of the Memorial? Yes No Unable to tell

Surface Coating

Does there appear to be a coating? Yes No Unable to determine

If known, identify type of coating.

Gilded Painted Varnished Waxed Unable to determine

Is the coating in good condition? Yes No Unable to determine

Basic Surface Condition Assessment (check one)

In your opinion, what is the general appearance or condition of the Memorial?

Well maintained Would benefit from treatment In urgent need of treatment Unable to determine

Briefly describe the Memorial (affiliation / overall condition & any concern not already touched on) .

Inspector’s Name _____ Date _____

SONS OF UNION VETERANS OF THE CIVIL WAR
CIVIL WAR MEMORIAL ASSESSMENT FORM
ADDENDUM – NARRATIVE

[Generally used to record the text of monuments, but may be used for any other useful information, such as if the monument has been moved or if you have information about the day of dedication. May repeat use of page as often as necessary.]

The Memorial is *currently* located at:

Street/Road address or site location _____

GPS Coordinates _____

City/Village and/or Township _____

County _____ State _____ Zip Code _____

TEXT

Inspector's Name _____ Date _____

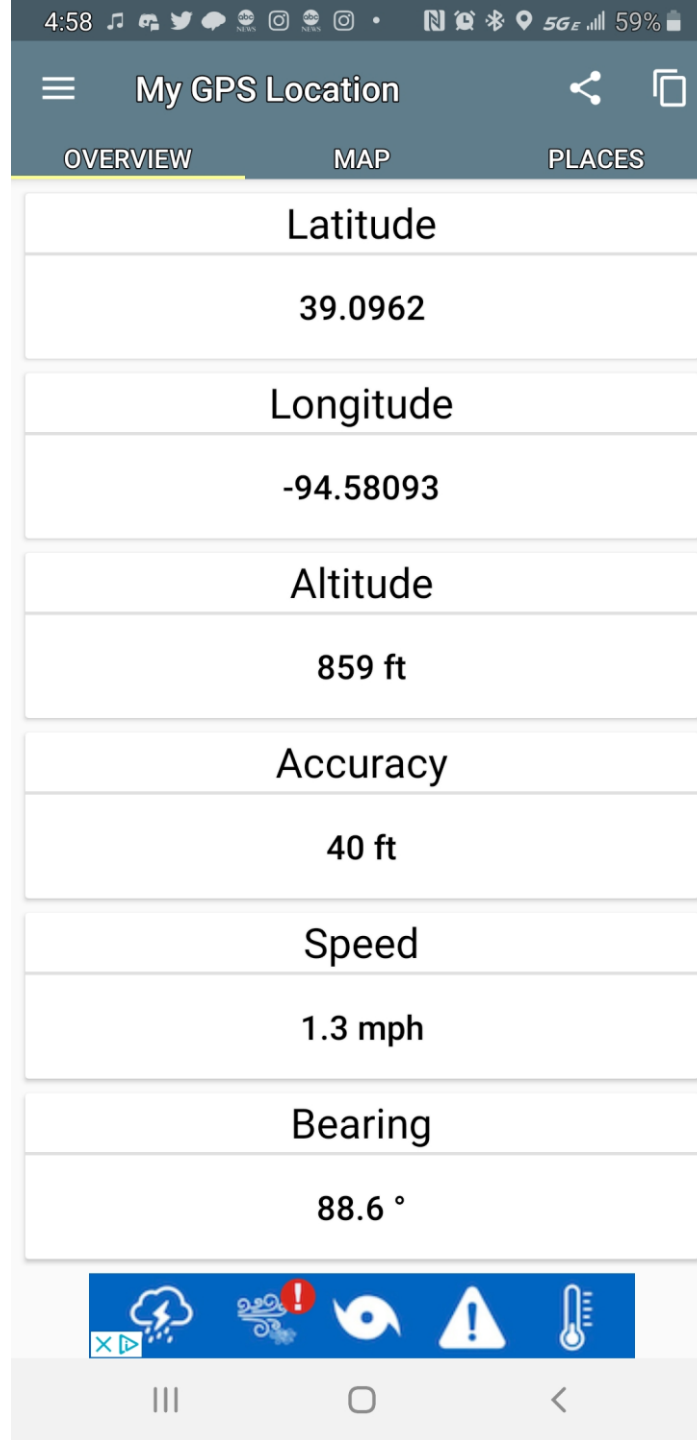


UNION PRISON COLLAPSE

Very near here at 1425 Grand Avenue during The Civil War, a tragedy occurred that was to intensify the atrocious hatred of the Border guerrillas for the Union forces. Under Union General Ewing's orders, the guerrillas women were imprisoned in a large three-storied brick building owned, but not then occupied by artist, George Caleb Bingham. About two o'clock on Friday, August 14, 1863 the weakened building collapsed injuring many of the female inmates. "Christie" McCorkle-Kerr, Susan Selvy Vandiver, Arminia Selvy and Josephine Anderson, sister of "Bloody Bill" Anderson, were killed. Also many female relatives of the men with Quantrill were injured. Mary Anderson, Armenia Whitsett Gilvey, Mollie Grindstaff, and Nanie Harris, all injured, had close relatives with Quantrill and the Younger brothers.

On the news of the tragedy reaching Quantrill's men in the brush, they were wild. Also on August 18th, General Ewing issued General Order No. 10, banishing the guerrillas' families from the state. Coupled with the death and injury in the collapse, then banishment of their women, the guerrillas seemed to scream for retaliatory measure.

Friday, August 21, 1863 dawned hot and clear as Quantrill, with 310 men perpetrated the Lawrence Massacre. In two hours close to 150 male citizens of Lawrence were killed, several only young boys. Not one Lawrence woman was injured. 185 buildings were destroyed. Eighty widows and 250 orphans were left crying in the dusty streets. By 9 o'clock the massacre was over and the guerrillas retreated. A tragedy here and General Order No. 10 were blamed for the Lawrence Massacre.



My GPS Location

OVERVIEW

MAP

PLACES

Latitude

39.0962

Longitude

-94.58093

Altitude

859 ft

Accuracy

40 ft

Speed

1.3 mph

Bearing

88.6 °

Updates by
PDC Brian
Smarker April
2021



UNION PRISON COLLAPSE

Very near here at 1425 Grand Avenue during The Civil War, a tragedy occurred that was to intensify the ferocious hatred of the Border guerrillas for the Union forces. Under Union General Ewing's orders, the guerrillas' women were imprisoned in a large three-storied brick building owned, but not then occupied by artist, George Caleb Bingham. About two o'clock on Friday, August 14, 1863 the weakened building collapsed injuring many of the female inmates. "Christie" McCorkle Kerr, Susan Selvy Vandiver, Arminia Selvy and Josephine Anderson, sister of "Bloody Bill" Anderson, were killed. Also many female relatives of the men with Quantrill were injured. Mary Anderson, Armenia Whitsett Gilvey, Mollie Grindstaff, and Nannie Harris, all injured, had close relatives with Quantrill and the Younger brothers.

On the news of the tragedy reaching Quantrill's men in the brush, they were wild. Also on August 18th, General Ewing issued General Order No. 10, banishing the guerrillas' families from the state. Coupled with the death and injury in the collapse, then banishment of their women, the guerrillas seemed to scream for retaliatory measures.

Friday, August 21, 1863 dawned hot and clear as Quantrill, with 310 men perpetrated the Lawrence Massacre. In two hours close to 150 male citizens of Lawrence were killed, several only young boys. Not one Lawrence woman was injured. 185 buildings were destroyed. Eighty widows and 250 orphans were left crying in the dusty streets. By 9 o'clock the massacre was over and the guerrillas retreated. A tragedy here and General Order No. 10, were blamed for the Lawrence Massacre.



UNION PRISON COLLAPSE

Very near here at 1425 Grand Avenue during The Civil War, a tragedy occurred that was to intensify the ferocious hatred of the Border guerrillas for the Union forces. Under Union General Ewing's orders, the guerrillas' women were imprisoned in a large three-story brick building owned, but not then occupied by artist, George Caleb Bingham. About two o'clock on Friday, August 14, 1863 the weakened building collapsed injuring many of the female inmates. "Christie" McCorkle Kerr, sister of "Bloody Bill" Arminis Selvy and Josephine Anderson, sister of "Bloody Bill" Anderson, were killed. Also many female relatives of the men with Quantrell were injured. Mary Anderson, Armonia Whitsett Oliver, Mollie Grindstaff, and Nende Harris, all injured, had close relatives with Quantrell and the younger brothers.

On the news of the tragedy reaching Quantrell's men in the brush, they were 4:18. Also on August 18th, General Ewing issued General Order No. 10, banishing the guerrillas' families from the state. Coupled with the death and injury in the collapse, then banishment of their women, the guerrillas seemed to scream for retaliatory measures.

Friday, August 21, 1863 dawned hot and clear as Quantrell, with 310 men perpetrated the Lawrence Massacre. In two hours close to 190 male citizens of Lawrence were killed, several only young boys. Not one Lawrence woman was injured. 185 buildings were destroyed. Eighty widows and 250 orphans were left crying in the dusty streets. By 9 o'clock the massacre was over and the guerrillas retreated. A tragedy here and General Order No. 10, were blamed for the Lawrence Massacre.



UNION PRISON COLLAPSE

Very near here at 1425 Grand Avenue during The Civil War, a tragedy occurred that was to intensify the ferocious hatred of the Border guerrillas for the Union forces. Under Union General Ewing's orders, the guerrillas' women were imprisoned in a large three-storied brick building owned, but not then occupied by artist, George Caleb Bingham. About two o'clock on Friday, August 14, 1863 the weakened building collapsed injuring many of the female inmates. "Christie" McCorkle-Kerr, Susan Selvy Vandiver, Arminia Selvy and Josephine Anderson, sister of "Bloody Bill" Anderson, were killed. Also many female relatives of the men with Quantrill were injured. Mary Anderson, Armenia Whitsett Gilvey, Mollie Grindstaff, and Nanie Harris, all injured, had close relatives with Quantrill and the Younger brothers.

On the news of the tragedy reaching Quantrill's men in the brush, they were wild. Also on August 18th, General Ewing issued General Order No. 10, banishing the guerrillas' families from the state. Coupled with the death and injury in the collapse, then banishment of their women, the guerrillas seemed to scream for retaliatory measures. Friday, August 21, 1863 dawned hot and clear as Quantrill, with 310 men perpetrated the Lawrence Massacre. In two hours close to 150 male citizens of Lawrence were killed, several only young boys. Not one Lawrence woman was injured. 185 buildings were destroyed. Eighty widows and 250 orphans were left crying in the dusty streets. By 9 o'clock the massacre was over and the guerrillas retreated. A tragedy here and General Order No. 10 were blamed for the Lawrence Massacre.



UNION PRISON COLLAPSE

Very near here at 1425 Grand Avenue during The Civil War, a tragedy occurred that was to intensify the ferocious hatred of the Border guerrillas for the Union forces. Under Union General Ewing's orders, the guerrillas' women were imprisoned in a large three-storied brick building owned, but not then occupied by artist, George Caleb Bingham. About two o'clock on Friday, August 14, 1863 the weakened building collapsed injuring many of the female inmates. "Christie" McCorkle Kerr, Susan Selvy Vandiver, Arminia Selvy and Josephine Anderson, sister of "Bloody Bill" Anderson, were killed. Also many female relatives of the men with Quantrill were injured. Mary Anderson, Armenia Whitsett Gilvey, Mollie Grindstaff, and Nanie Harris, all injured, had close relatives with Quantrill and the Younger brothers.

On the news of the tragedy reaching Quantrill's men in the brush, they were wild. Also on August 18th, General Ewing issued General Order No. 10, banishing the guerrillas' families from the state. Coupled with the death and injury in the collapse, then banishment of their women, the guerrillas seemed to scream for retaliatory measures.

Friday, August 21, 1863 dawned hot and clear as Quantrill, with 310 men perpetrated the Lawrence Massacre. In two hours close to 150 male citizens of Lawrence were killed, several only young boys. Not one Lawrence woman was injured. 185 buildings were destroyed. Eighty widows and 250 orphans were left crying in the dusty streets. By 9 o'clock the massacre was over and the guerrillas retreated. A tragedy here and General Order No. 10, were blamed for the Lawrence Massacre.





UNION PRISON COLLAPSE

Very near here at 1425 Grand Avenue during The Civil War, a tragedy occurred that was to intensify the ferocious hatred of the Border guerrillas for the Union forces. Under Union General Ewing's orders, the guerrillas' women were imprisoned in a large three-storied brick building owned, but not then occupied by artist, George Caleb Bingham. About two o'clock on Friday, August 14, 1863 the weakened building collapsed injuring many of the female inmates. "Christie" McCorkle Kerr, Susan Selvy Vandiver, Arminia Selvy and Josephine Anderson, sister of "Bloody Bill" Anderson, were killed. Also many female relatives of the men with Quantrill were injured. Mary Anderson, Arminia Whitsett Gilvey, Mollie Grinstead, and Nannie Harris, all injured, had close relatives with Quantrill and the Younger brothers.

On the news of the tragedy reaching Quantrill's men in the brush, they were wild. Also on August 18th, General Ewing issued General Order No. 10, banishing the guerrillas' families from the state. Coupled with the death and injury in the collapse, then banishment of their women, the guerrillas seemed to scream for retaliatory measures.

Friday, August 21, 1863 dawned hot and clear as Quantrill, with 310 men perpetrated the Lawrence Massacre. In two hours close to 150 male citizens of Lawrence were killed, several only young boys. Not one Lawrence woman was injured, 105 buildings were destroyed. Eighty widows and 250 orphans were left crying in the dusty streets. By 9 o'clock the massacre was over and the guerrillas retreated. A tragedy here and General Order No. 10, were blamed for the Lawrence Massacre.

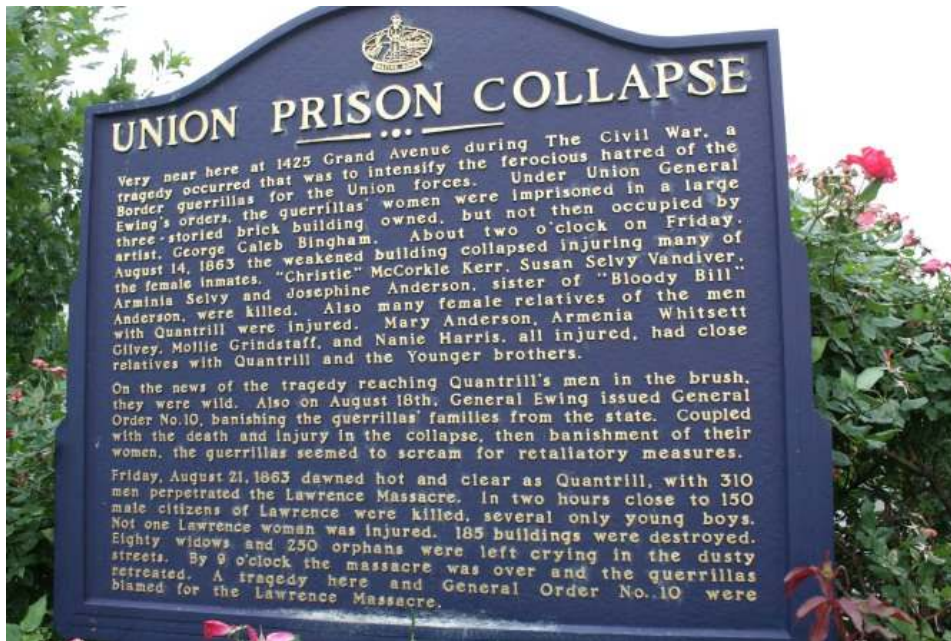


UNION PRISON COLLAPSE

Very near here at 1425 Grand Avenue during The Civil War, a tragedy occurred that was to intensify the ferocious hatred of the Border guerrillas for the Union forces. Under Union General Ewing's orders, the guerrillas' women were imprisoned in a large three-story brick building owned, but not then occupied by artist, George Caleb Bingham. About two o'clock on Friday, August 14, 1863 the weakened building collapsed injuring many of the female inmates. "Christie" McCorkle Kerr, Susan Selvy Vandiver, Arminia Selvy and Josephine Anderson, sister of "Bloody Bill" Anderson, were killed. Also many female relatives of the men with Quantrill were injured. Mary Anderson, Armenia Whitsett Gilvey, Mollie Grindstaff, and Nanie Harris, all injured, had close relatives with Quantrill and the Younger brothers.

On the news of the tragedy reaching Quantrill's men in the brush, they were wild. Also on August 18th, General Ewing issued General Order No. 10, banishing the guerrillas' families from the state. Coupled with the death and injury in the collapse, then banishment of their women, the guerrillas seemed to scream for retaliatory measures.

Friday, August 21, 1863 dawned hot and clear as Quantrill, with 310 men perpetrated the Lawrence Massacre. In two hours close to 150 male citizens of Lawrence were killed, several only young boys. Not one Lawrence woman was injured. 185 buildings were destroyed. Eighty widows and 250 orphans were left crying in the dusty streets. By 9 o'clock the massacre was over and the guerrillas retreated. A tragedy here and General Order No. 10 were blamed for the Lawrence Massacre.



[Home](#) [About Us](#) [Calendar](#) [Gallery](#) [OKC](#) [Speakers](#) [Markers](#) [Monument](#) [Archives](#) [Pay Online](#) [Membership](#)

**New
Mailing
Address**

The Native Sons and Daughters of Greater Kansas City

P. O. Box 25513
Kansas City, MO 64119-5513

Phone: 816-278-8929 | Email: admin@nsdkc.org

[Home](#) [About Us](#) ▼ [Calendar](#) ▼ [Gallery](#) [OKC](#) [Speakers](#) [Markers](#) [Monument](#) ▼ [Archives](#) ▼ [Pay Online](#) ▼ [Membership](#) ▼

Union Prison Collapse

15th Street and Grand Avenue (SE corner), Kansas City, Missouri

Placed 1995

Same text both sides – Reset 2017 after bridge re-construction.

