

NATIONAL ORGANIZATION  
SONS OF UNION VETERANS OF THE CIVIL WAR  
CIVIL WAR MEMORIAL ASSESSMENT FORM

Type of Memorial (check all applicable)

Monument  with Sculpture  without Sculpture  with Cannon  standalone Cannon  
 Historical Marker  Plaque  Other ( flag pole, G.A.R. buildings, stained glass windows, etc.)

Affiliation

GAR  MOLLUS  SUVCW  WRC  ASUVCW  
 LGAR  DUVCW  Other

If known, record name and number of post, camp, corps, auxiliary, tent, circle or appropriate information of other groups:  
Battle of Athens State Historic Site, Department of Natural Resources

Original Dedication Date About 2014-15 Please consult any/all newspaper archives for a local paper's article that would have information on the *first* dedication ceremony and/or other facts on the memorial. Please submit a copy of your findings with full identification of the paper & date of publication. Thank you.

Location

The Memorial is *currently* located at:

Street/Road address or site location Battle of Athens State Historic Site  
GPS Coordinates N40;35;6.30999 W91;41;49.24999

City/Village &/or Township Revere  
County Clark State MO Zip Code 63465

The front of the Memorial faces:  North  South  East  West

Government Body, Agency, or Individual Owner

Name Battle of Athens State Historic Site  
Dept./Div. Dept of Natural Resources - Division of State Parks  
Street Address PO Box 159  
City Jefferson City State MO Zip Code 65101  
Contact Person Site Manager Telephone ( 660 ) 877-3871 ext

Is Memorial on the National Register of Historic Places  Yes  No ID # if known

For Monuments with/without sculpture:

Physical Details

Material of Monument or base under a Sculpture or Cannon =  Stone  Concrete  Metal  Other  
If known, name specific material (color of granite, marble, etc.)

Material of the Sculpture  Stone  Concrete  Metal  Other Is it hollow or solid?   
If known, name specific material (color of granite, marble, etc.)



**Environmental Setting**

(The general vicinity and immediate locale surrounding a memorial can play a major role in its overall condition.)

**Type of Location**

Cemetery  Park  Plaza/Courtyard  "Town Square"  Post Office  
 School  Municipal Building  State Capitol  Courthouse  College Campus  
 Traffic Circle  Library Other: \_\_\_\_\_

**General Vicinity**

Rural (low population, open land)  Suburban (residential, near city)  Town  Urban / Metropolitan

**Immediate Locale** (check as many as may apply)

Industrial  Commercial  Street/Roadside within 20 feet  Tree Covered (overhanging branches)  
 Protected from the elements (canopy or enclosure, indoors)  Protected from the public (fence or other barrier)

Any other significant environmental factor Within the boundaries of a state historic site

[To detail the condition of a monument used the addendum form for *Monument's Condition*]

**Supplemental Background Information**

In addition to your on-site survey, any additional information you can provide on the described Memorial will be welcomed. Please label each account with its source (author, title, publisher, date, pages). Topics include any reference to the points listed on this questionnaire, plus any previous conservation treatments - or efforts to raise money for treatment.

Addendums attached to this electronic file are the *Monument's Condition* and the *Narrative* forms. Only the *Monument's Condition* form is required if you are requesting grant money using form CWM-62 *SUVCW Memorial Grant Application Form and Instructions*.

Thank you.

Inspector Identification Walt Busch & Sumner Hunnewell Date of On-site Survey 03 May 2018

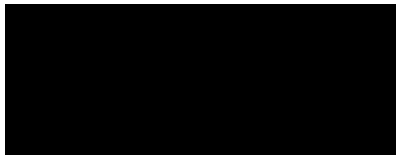


Are you a member of the Allied Orders of the G.A.R.? If so, which one?

Walt - US Grant Camp 68 SUVCW Sumner - Fletcher Camp 47

Please send this completed form to:

Walt Busch, PDC, Chair



Thank you for your help, and attention to detail.

**SONS OF UNION VETERANS OF THE CIVIL WAR – CIVIL WAR MEMORIALS COMMITTEE.**







# American Civil War (1861 – 1865), THE B

## Athens and Missouri - a Town and State Divided by Civil War

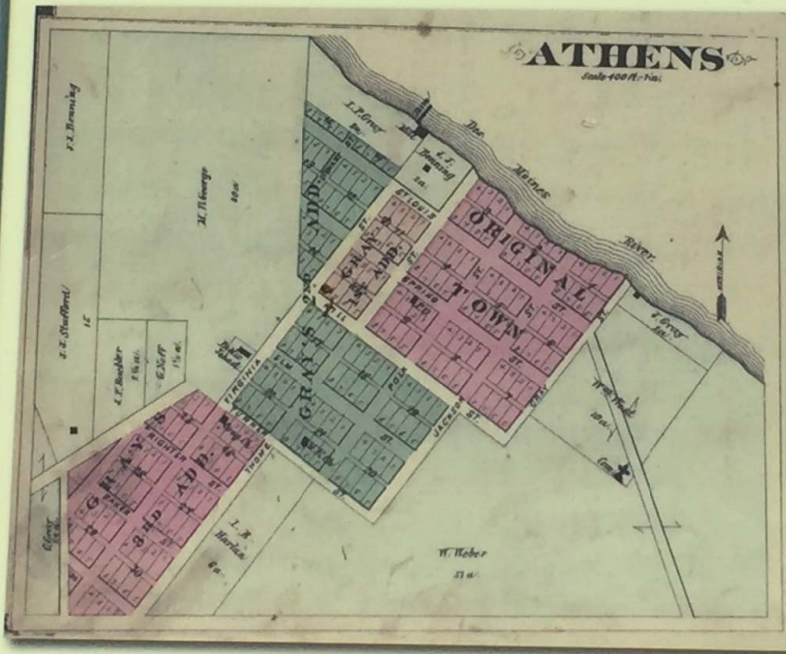
In the early 1860s, the prospect of war divided Missouri. Many of Missouri's settlers came from Southern states. Some owned enslaved people and many held strong views favoring slavery or "Southern rights." Despite this, a statewide convention held in March 1861 turned down secession. With the declaration of war in April 1861, remaining neutral was impossible. Missouri's Gov. Claiborne F. Jackson refused President

Abraham Lincoln's directive to furnish troops. The state deteriorated into chaos as each side fought for control of the state. Decisions made then had lasting effects for generations.

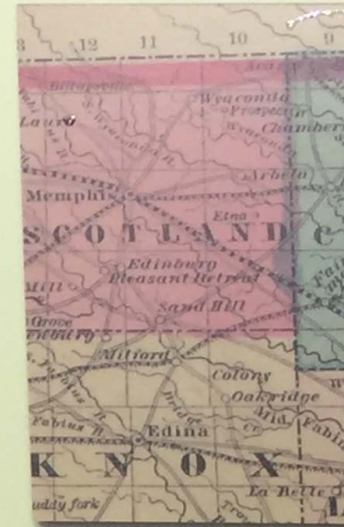
Northeast Missouri bordered two free states – Iowa and Illinois – where Underground Railroad stations encouraged the enslaved to escape bondage. Tension between pro-Union and secessionists increased substantially in

1861 and soon led to violence as roving bands began attacking one another. Recruiters for both sides actively garnered members and soon battle lines were drawn.

Pro-Union forces roamed Clark County but settled in Athens by July. The location provided access to the rail line across the Des Moines River so they could gather supplies and continue to recruit new members. While occupying the town, they confiscated food and supplies from citizens and arrested several as traitors. Pro-secessionist Missouri State Guard forces assembled to oppose them. Both sides prepared to fight. Local residents joined both sides; the coming battle pitted neighbors and even family members against one another.



Athens, Mo., was a small but bustling river port on the Des Moines River in the 1850s.



This partial view of "Lloyd's Croton, Iowa, and Illinois (c)

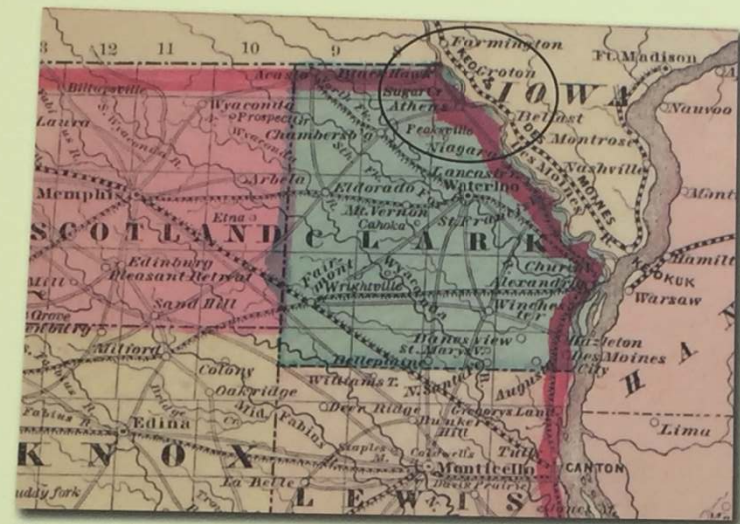


The question of secession during the spring of 1861  
Kenneth Gray

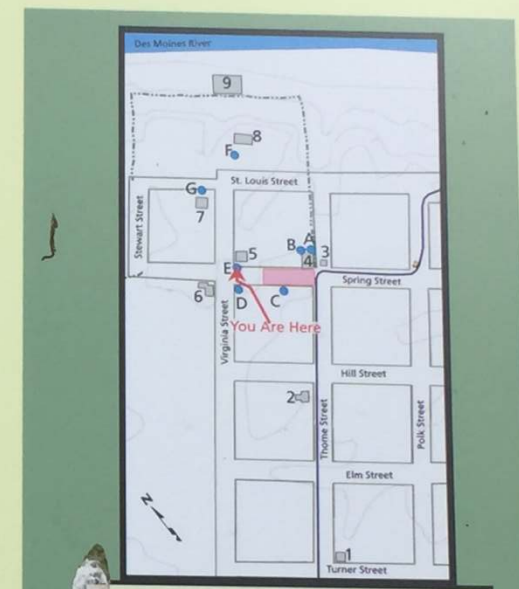


# 1865), THE BATTLE OF ATHENS

## Aug. 5, 1861

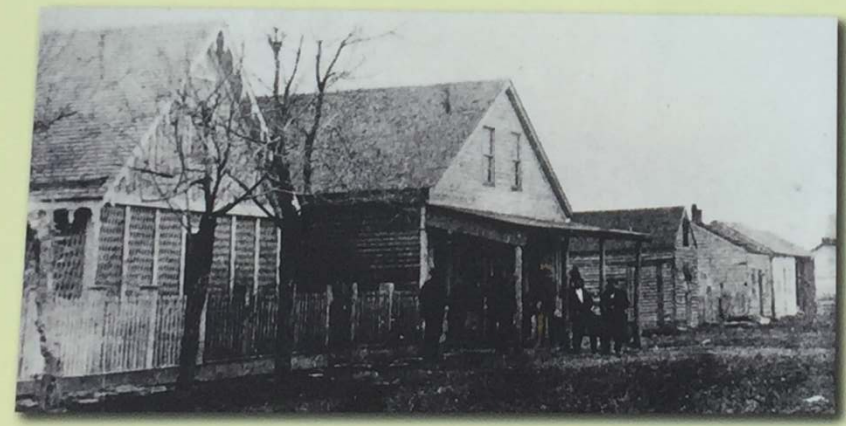


This partial view of "Lloyd's 1861 map of Missouri" shows Athens, Croton, Iowa, and Illinois (circle added).



- LEGEND**
- Hiking Trail ————
  - Hwy CC ————
  - Parking Lot
- BUILDINGS AND FOUNDATIONS**
1. Athens Methodist Church
  2. Moreland House
  3. Monument
  4. Athens Store Shelter\*
  5. Stone House
  6. Smith Hotel
  7. Colton Foundation
  8. Benning House (Cannonball House)
  9. Athens Mill Foundation
- INTERPRETIVE WAYSIDES**
- A. Athens Overview
  - B. Athens Store
  - C. The Cannons Roar
  - D. Missouri State Guard
  - E. Athens and Missouri
  - F. First NE Missouri Home Guard
  - G. Aftermath

\*restrooms in shelter



The question of secession split neighbors and families in Athens, Mo., during the spring of 1861. Late 19th century view on Spring Street. Courtesy Kenneth Gray



## American Civil War (1861 – 1865), THE BATTLE OF ATHENS

### Athens and Missouri - a Town and State Divided by Civil War

In the early 1860s, the prospect of war divided Missouri. Many of Missouri's settlers came from Southern states. Some owned enslaved people and many held strong views favoring slavery or "Southern rights." Despite this, a statewide convention held in March 1861 turned down secession. With the declaration of war in April 1861, remaining neutral was impossible. Missouri's Gov. Claiborne F. Jackson refused President

Abraham Lincoln's directive to furnish troops. The state deteriorated into chaos as each side fought for control of the state. Decisions made then had lasting effects for generations.

Northeast Missouri bordered two free states - Iowa and Illinois - where Underground Railroad stations encouraged the enslaved to escape bondage. Tension between pro-Union and secessionists increased substantially in

1861 and soon led to violence as roving bands began attacking one another. Recruiters for both sides actively garnered members and soon battle lines were drawn.

Pro-Union forces roamed Clark County but settled in Athens by July. The location provided access to the rail line across the Des Moines River so they could gather supplies and continue to recruit new members. While occupying the town, they confiscated food and supplies from citizens and arrested several as traitors.

Pro-secessionist Missouri State Guard forces assembled to oppose them. Both sides prepared to fight. Local residents joined both sides; the coming battle pitted neighbors and even family members against one another.



Athens, Mo., was a small but bustling river port on the Des Moines River in the 1850s.

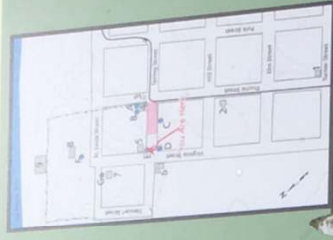


This partial view of "Lloyd's 1861 map of Missouri" shows Athens, Croton, Iowa, and Illinois (circle added).



The question of secession split neighbors and families in Athens, Mo., during the spring of 1861. Late 19th century view on Spring Street. Courtesy Kenneth Gray

Aug. 5, 1861



LEGEND

- █ Buildings
- █ High Wall
- █ Hwy 20
- █ Parking Lot

BUILDINGS AND FOUNDATIONS

1. Athens Methodist Church
2. Merriam House
3. Athens Store
4. Athens Store Shelter\*
5. Stone House
6. Smith Hotel
7. Athens Mill
8. Berding House (Cannonball House)
9. Athens Mill Foundation

INTERPRETIVE WAYSIDES

- A. Athens Store
- B. Athens Store
- C. The Cannon Ball
- D. Athens Store
- E. Missouri State Guard
- F. First NE Missouri Home Guard
- G. Aftermath

\*restroom in shelter