

NATIONAL ORGANIZATION
SONS OF UNION VETERANS OF THE CIVIL WAR
CIVIL WAR MEMORIAL ASSESSMENT FORM

Type of Memorial (check all applicable)

Monument with Sculpture without Sculpture with Cannon standalone Cannon
Historical Marker Plaque Other (flag pole, G.A.R. buildings, stained glass windows, etc.)

Affiliation

GAR MOLLUS SUVCW WRC ASUVCW
LGAR DUVCW Other

If known, record name and number of post, camp, corps, auxiliary, tent, circle or appropriate information of other groups:
Battle of Athens State Historic Site, Department of Natural Resources

Original Dedication Date July 2016 Please consult any/all newspaper archives for a local paper's article that would have information on the first dedication ceremony and/or other facts on the memorial. Please submit a copy of your findings with full identification of the paper & date of publication. Thank you.

Location

The Memorial is currently located at:

Street/Road address or site location Battle of Athens State Historic Site Old Store / Shelter
GPS Coordinates N40; 35; 6.0100 W91;41;46,49999

City/Village &/or Township Revere
County Clark State MO Zip Code 63465

The front of the Memorial faces: North South East West

Government Body, Agency, or Individual Owner

Name Battle of Athens State Historic Site
Dept./Div. Dept of Natural Resources - Division of State Parks
Street Address PO Box 159
City Jefferson City State MO Zip Code 65101
Contact Person Site Manager Telephone (660) 877-3871 ext

Is Memorial on the National Register of Historic Places Yes No ID # if known

For Monuments with/without sculpture:

Physical Details

Material of Monument or base under a Sculpture or Cannon = Stone Concrete Metal Other
If known, name specific material (color of granite, marble, etc.)

Material of the Sculpture Stone Concrete Metal Other Is it hollow or solid?
If known, name specific material (color of granite, marble, etc.)

Environmental Setting

(The general vicinity and immediate locale surrounding a memorial can play a major role in its overall condition.)

Type of Location

Cemetery Park Plaza/Courtyard "Town Square" Post Office
 School Municipal Building State Capitol Courthouse College Campus
 Traffic Circle Library Other: _____

General Vicinity

Rural (low population, open land) Suburban (residential, near city) Town Urban / Metropolitan

Immediate Locale (check as many as may apply)

Industrial Commercial Street/Roadside within 20 feet Tree Covered (overhanging branches)
 Protected from the elements (canopy or enclosure, indoors) Protected from the public (fence or other barrier)

Any other significant environmental factor Within the boundaries of a state historic site

[To detail the condition of a monument used the addendum form for *Monument's Condition*]

Supplemental Background Information

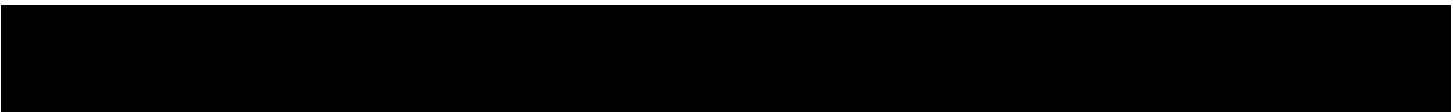
In addition to your on-site survey, any additional information you can provide on the described Memorial will be welcomed. Please label each account with its source (author, title, publisher, date, pages). Topics include any reference to the points listed on this questionnaire, plus any previous conservation treatments - or efforts to raise money for treatment.

Addendums attached to this electronic file are the *Monument's Condition* and the *Narrative* forms. Only the *Monument's Condition* form is required if you are requesting grant money using form CWM-62 *SUVCW Memorial Grant Application Form and Instructions*.

Thank you.

Inspector Identification _____ Date of On-site Survey 03 May 2018

Your Name Walt Busch & Sumner Hunnewell

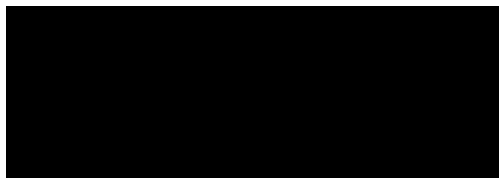


Are you a member of the Allied Orders of the G.A.R.? If so, which one?

Walt - US Grant Camp 68 SUVCW Sumner - Fletcher Camp 47

Please send this completed form to:

Walt Busch, PDC, Chair



Thank you for your help, and attention to detail.

SONS OF UNION VETERANS OF THE CIVIL WAR – CIVIL WAR MEMORIALS COMMITTEE.

Businesses in Athens, circa 1853-1860

By the 1850s the town had expanded and commercial buildings were being constructed on top of the bluff at Athens. A list of businesses and organizations (circa 1853-1860) reveals the extent of the town's growth.

| | |
|--|--|
| <p>Wm. B. Armstrong, general store W. Armstrong, agent K. Ft. D. and M. Railroad Armstrong, beef and pork packer Baker and Company, general store J. and W. B. Barwett, cooper David Bedell, carpenter and builder J. S. Bedell, justice of the peace John Bobbitt, carpenter and builder Mr. Beucler (or Benchler), stoves and sheet iron ware W. Burhage, painter E. F. Colton, flour and grist mill A. W. Calvert, cabinet maker and carpenter E. F. Colton, wooden manufacturer Wm. Deck, blacksmith Isaac, grocer Henry Fehlhauer, wagon maker R. P. Gray, coal dealer B. Gray, livery stable Isaac P. Gray, grocer George Gray, general store G. Gray, brick yard George Gray, beef and pork packer George Gray, postmaster T. H. Hallan, physician and surgeon T. H. and J. R. Hallan, druggists P. F. Hamilton, cooper J. M. Hiller, general store George Hiller, blacksmith</p> | <p>David Kennedy, general store Miss Kelly, milliner and dress maker J. T. McKnight, baker David Mc. Kee, assessor McGown and Boler, blacksmith J. T. McNiglet, tailor Rev. D. Mason, Methodist Episcopal minister J. D. Nash, boot and shoe dealer G. Neuse, lumber yard Henry Ostrander, blacksmith James Perkins, justice of the peace W. Perkins, justice of the peace B. Robinson, ambrotype artist G. Slaughter, constable C. W. Stone, butcher R. Jackson, proprietor, St. Louis Hotel M. Scott, cabinet maker John Stafford, general store A. Starr, cooper D. M. Scott, physician R. P. Slaughter, school teacher James Slaughter, meat market Peter Turner, brick yard Rev. Umpton, Presbyterian minister Henry Warner, boots and shoes Rev. Samuel Wood, Christian minister</p> |
|--|--|

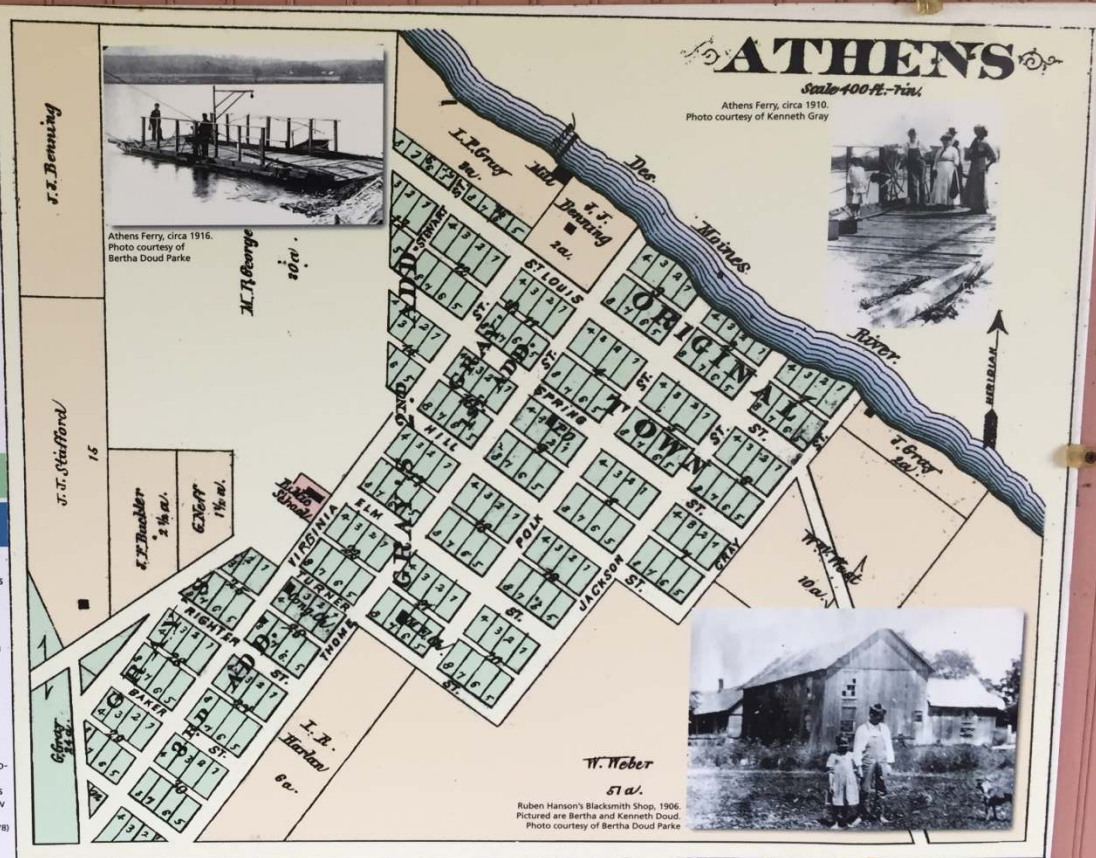
(Kahoka Gazette-Herald, June 20, 1930)

The list of businesses reveals that the Keokuk, Fort Des Moines and Minnesota Railroad Company had a station agent in Athens. On the eve of the Civil War, Athens was a steamboat port, grain, livestock and manufacturing center. Plans to connect Athens to the Keokuk, Fort Des Moines and Minnesota Railroad at Croton were interrupted by the Civil War.

Five churches: a Baptist, Presbyterian, Christian and two Methodist were located in pre-Civil War Athens. Among other businesses and organizations in 19th century Athens were: Doud's Paint and Carriage Shop, Allan Faxon's Wagon Factory, Hancock's Shoe Repair, Ruben Hanson's Blacksmith Shop, a Masonic Lodge, Express Office, a large brick two-story public school and an academy under the charge of a Mr. Slaughter and Mr. Burah. Athens was also served by a stagecoach line that ran from Alexandria, through Athens, to Bloomfield, Iowa.

The population of Athens was reported as over 500 in the mid-1850s and by most accounts the town continued to thrive and grow up to the Civil War. Pro-South sentiments during the war brought hardship in the aftermath. When Athens missed the last opportunity in 1886 to secure a railroad, the town was doomed. By 1887, many of the houses and businesses were moved to the new town of Revere. By 1900, Athens only had about 50 residents.

Map from *An Illustrated Historical Atlas of Clark County, Missouri* (1878)



Businesses in Athens, circa 1853-1860

By the 1850s the town had expanded and commercial buildings were being constructed on top of the bluff at Athens. A list of businesses and organizations (circa 1853-1860) reveals the extent of the town's growth.

Wm. B. Armstrong, general store
 W. Armstrong, agent K. Ft. D. and M. Railroad
 Armstrong, beef and pork packer
 Baker and Company, general store
 J. and W. B. Barwett, coopers
 David Bedell, carpenter and builder
 J. S. Bedell, justice of the peace
 John Bobbitt, carpenter and builder
 Mr. Beucler (or Benchler), stoves and sheet iron ware
 W. Burhage, painter
 E. F. Colton, flour and grist mill
 A. W. Calvert, cabinet maker and carpenter
 E. F. Colton, woolen manufacturer
 Wm. Deck, blacksmith
 Isaac, grocer
 Henry Fehlhaber, wagon maker
 R. P. Gray, coal dealer
 B. Gray, livery stable
 Isaac P. Gray, grocer
 George Gray, general store
 G. Gray, brick yard
 George Gray, beef and pork packer
 George Gray, postmaster
 T. H. Hallan, physician and surgeon
 T. H. and J. R. Hallan, druggists
 P. F. Hamilton, cooper
 J. M. Hiller, general store
 George Hiller, blacksmith

David Kennedy, general store
 Miss Kelly, milliner and dress maker
 J. T. McKnight, baker
 David Mc Kee, assessor
 McGown and Boler, blacksmith
 J. T. McNiglet, tailor
 Rev. D. Mason, Methodist Episcopal minister
 J. D. Nash, boot and shoe dealer
 G. Neuse, lumber yard
 Henry Ostrander, blacksmith
 James Perkins, justice of the peace
 W. Perkins, justice of the peace
 B. Robinson, ambrotype artist
 G. Slaughter, constable
 C. W. Stone, butcher
 R. Jackson, proprietor, St. Louis Hotel
 M. Scott, cabinet maker
 John Stafford, general store
 A. Starr, cooper
 D. M. Scott, physician
 R. P. Slaughter, school teacher
 James Slaughter, meat market
 Peter Turner, brick yard
 Rev. Umpston, Presbyterian minister
 Henry Warner, boots and shoes
 Rev. Samuel Wood, Christian minister

(Kahoka Gazette-Herald, June 20, 1930)

The list of businesses reveals that the Keokuk, Fort Des Moines and Minnesota Railroad Company had a station agent in Athens. On the eve of the Civil War, Athens was a steamboat port, grain, livestock and manufacturing center. Plans to connect Athens to the Keokuk, Fort Des Moines and Minnesota Railroad at Croton were interrupted by the Civil War.

Five churches: a Baptist, Presbyterian, Christian and two Methodist were located in pre-Civil War Athens. Among other businesses and organizations in 19th century Athens were: Doud's Paint and Carriage Shop, Allan Faxon's Wagon Factory, Hancock's Shoe Repair, Ruben Hanson's Blacksmith Shop, a Masonic Lodge, Express Office, a large brick two-story public school and an academy under the charge of a Mr. Slaughter and Mr. Burah. Athens was also served by a stagecoach line that ran from Alexandria, through Athens, to Bloomfield, Iowa.

The population of Athens was reported as over 500 in the mid-1850s and by most accounts the town continued to thrive and grow up to the Civil War. Pro-South sentiments during the war brought hardship in the aftermath. When Athens missed the last opportunity in 1886 to secure a railroad, the town was doomed. By 1887, many of the houses and businesses were moved to the new town of Revere. By 1900, Athens only had about 50 residents.

Map from *An Illustrated Historical Atlas of Clark County, Missouri* (1878)

J. T. Stafford

G. Gray
 24d.

Businesses in Athens, circa 1853-1860

By the 1850s the town had expanded and commercial buildings were being constructed on top of the bluff at Athens. A list of businesses and organizations (circa 1853-1860) reveals the extent of the town's growth.

Wm. B. Armstrong, general store
W. Armstrong, agent K. Ft. D. and M. Railroad
Armstrong, beef and pork packer
Baker and Company, general store
J. and W. B. Barwett, coopers
David Bedell, carpenter and builder
J. S. Bedell, justice of the peace
John Bobbitt, carpenter and builder
Mr. Beucler (or Benchler), stoves and sheet iron ware
W. Burhage, painter
E. F. Colton, flour and grist mill
A. W. Calvert, cabinet maker and carpenter
E. F. Colton, woolen manufacturer
Wm. Deck, blacksmith
Isaac, grocer
Henry Fehlhaber, wagon maker
R. P. Gray, coal dealer
B. Gray, livery stable
Isaac P. Gray, grocer
George Gray, general store
G. Gray, brick yard
George Gray, beef and pork packer
George Gray, postmaster
T. H. Hallan, physician and surgeon
T. H. and J. R. Hallan, druggists
P. F. Hamilton, cooper
J. M. Hiller, general store
George Hiller, blacksmith

David Kennedy, general store
Miss Kelly, milliner and dress maker
J. T. McKnight, baker
David Mc Kee, assessor
McGown and Boler, blacksmith
J. T. McNiglet, tailor
Rev. D. Mason, Methodist Episcopal minister
J. D. Nash, boot and shoe dealer
G. Neuse, lumber yard
Henry Ostrander, blacksmith
James Perkins, justice of the peace
W. Perkins, justice of the peace
B. Robinson, ambrotype artist
G. Slaughter, constable
C. W. Stone, butcher
R. Jackson, proprietor, St. Louis Hotel
M. Scott, cabinet maker
John Stafford, general store
A. Starr, cooper
D. M. Scott, physician
R. P. Slaughter, school teacher
James Slaughter, meat market
Peter Turner, brick yard
Rev. Umpston, Presbyterian minister
Henry Warner, boots and shoes
Rev. Samuel Wood, Christian minister

(Kahoka Gazette-Herald, June 20, 1930)

The list of businesses reveals that the Keokuk, Fort Des Moines and Minnesota Railroad Company had a station agent in Athens. On the eve of the Civil War, Athens was a steamboat port, grain, livestock and manufacturing center. Plans to connect Athens to the Keokuk, Fort Des Moines and Minnesota Railroad at Croton were interrupted by the Civil War.

Five churches: a Baptist, Presbyterian, Christian and two Methodist were located in pre-Civil War Athens. Among other businesses and organizations in 19th century Athens were: Doud's Paint and Carriage Shop, Allan Faxon's Wagon Factory, Hancock's Shoe Repair, Ruben Hanson's Blacksmith Shop, a Masonic Lodge, Express Office, a large brick two-story public school and an academy under the charge of a Mr. Slaughter and Mr. Burah. Athens was also served by a stagecoach line that ran from Alexandria, through Athens, to Bloomfield, Iowa.

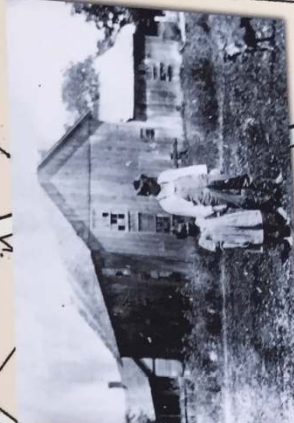
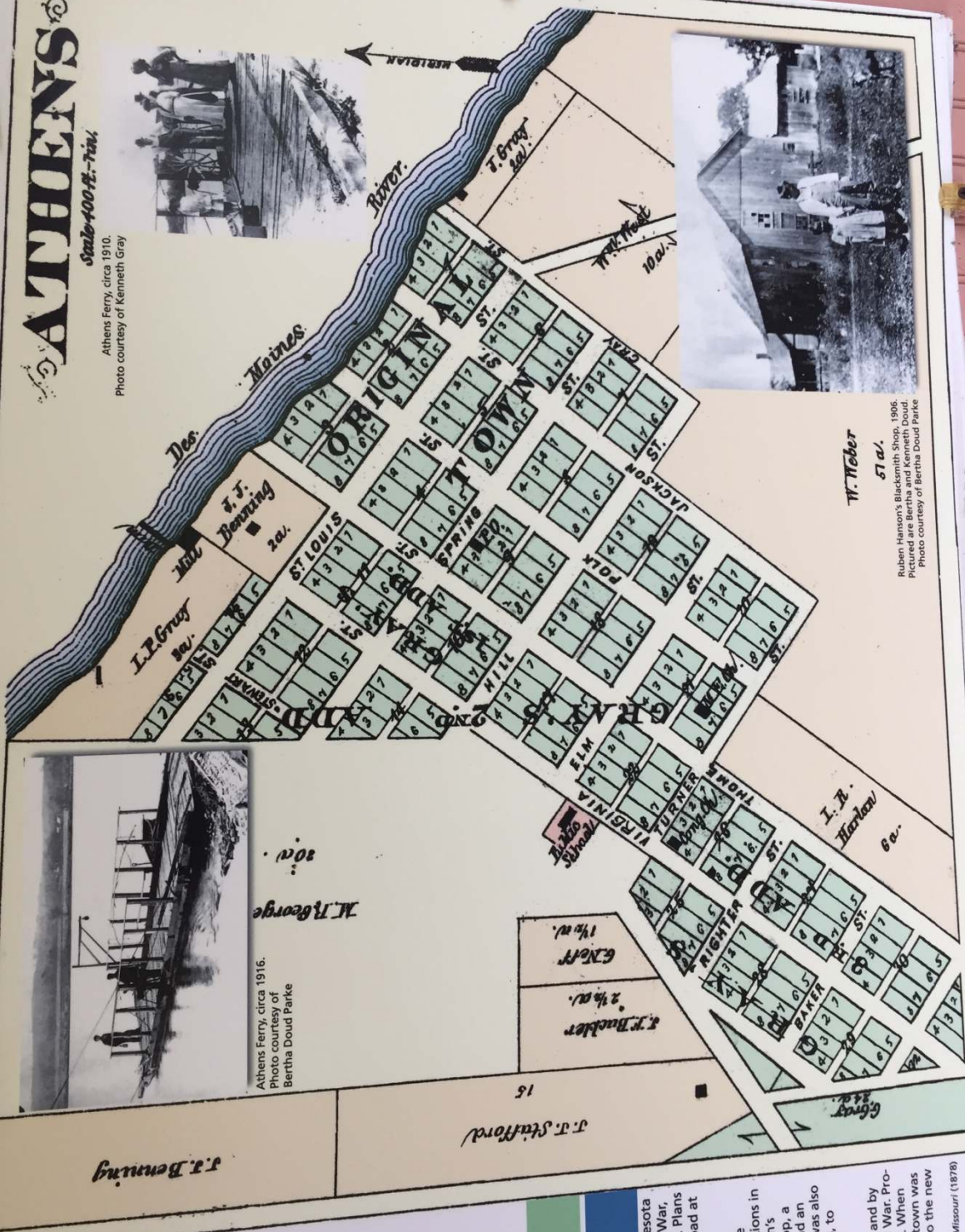
The population of Athens was reported as over 500 in the mid-1850s and by most accounts the town continued to thrive and grow up to the Civil War. Pro-South sentiments during the war brought hardship in the aftermath. When Athens missed the last opportunity in 1886 to secure a railroad, the town was doomed. By 1887, many of the houses and businesses were moved to the new town of Revere. By 1900, Athens only had about 50 residents.

Map from *An Illustrated Historical Atlas of Clark County, Missouri* (1878)

ATHENS

Scale 400 ft. = 1 in.

Athens Ferry, circa 1910.
Photo courtesy of Kenneth Gray



Ruben Hanson's Blacksmith Shop, 1906.
Pictured by Kenneth Doud.
Photo courtesy of Bertha Doud Parke



Athens Ferry, circa 1916.
Photo courtesy of Bertha Doud Parke

Minnesota
the Civil War,
center. Plans
Railroad at
st were
organizations in
Faxon's
th Shop, a
ool and an
hens was also
Athens, to
-1850s and by
the Civil War. Pro
ermath. When
d, the town was
owed to the new
County, Missouri (1878)