

NATIONAL ORGANIZATION
SONS OF UNION VETERANS OF THE CIVIL WAR
CIVIL WAR MEMORIAL ASSESSMENT FORM

Type of Memorial (check all applicable)

Monument with Sculpture without Sculpture with Cannon standalone Cannon
 Historical Marker Plaque Other (flag pole, G.A.R. buildings, stained glass windows, etc.)

Affiliation

GAR MOLLUS SUVCW WRC ASUVCW
 LGAR DUVCW Other

If known, record name and number of post, camp, corps, auxiliary, tent, circle or appropriate information of other groups:
Battle of Athens State Historic Site, Department of Natural Resources

Original Dedication Date July 2016 Please consult any/all newspaper archives for a local paper's article that would have information on the first dedication ceremony and/or other facts on the memorial. Please submit a copy of your findings with full identification of the paper & date of publication. Thank you.

Location

The Memorial is currently located at:

Street/Road address or site location Battle of Athens State Historic Site
GPS Coordinates N40;35;6.1799999 W91;41;50.48999

City/Village &/or Township Revere
County Clark State MO Zip Code 63465

The front of the Memorial faces: North South East West

Government Body, Agency, or Individual Owner

Name Battle of Athens State Historic Site
Dept./Div. Dept of Natural Resources - Division of State Parks
Street Address PO Box 159
City Jefferson City State MO Zip Code 65101
Contact Person Site Manager Telephone (660) 877-3871 ext

Is Memorial on the National Register of Historic Places Yes No ID # if known

For Monuments with/without sculpture:

Physical Details

Material of Monument or base under a Sculpture or Cannon = Stone Concrete Metal Other
If known, name specific material (color of granite, marble, etc.)

Material of the Sculpture Stone Concrete Metal Other Is it hollow or solid?
If known, name specific material (color of granite, marble, etc.)

For Historic Marker or Plaque:

Material of Plaque or Historical Marker / Tablet = Aluminum Frame - Polymer Material for sign

For Cannons with/without monument:

Material of Cannon = Bronze Iron Type of Cannon (if known) _____

Rifled YES NO

Markings: Muzzle _____ Base Ring/Breech _____

Left Trunion _____ Right Trunion _____

Is inert ammunition a part of the Memorial? Yes No

[For camp/department monuments officer's use: Cannon on list of known ordnance] Yes No

For Other Memorials: (flag pole, G.A.R. buildings, stained glass windows, etc.)

What best describes the memorial

Materials of the Memorial

Complete for All Memorials

Approximate Dimensions (indicate unit of measure) - taken from tallest / widest points

3 1/2 ft _____ Height 36 inch _____ Width 24 inch _____ Depth or _____ Diameter

For Memorials with multiple Sculptures, please record this information on a separate sheet of paper for each statue (service, pose, etc) and attach to this form. Please describe the "pose" of each statue and any weapons/implements involved (in case your photos become separated from this form). Thank you!

Markings/Inscriptions (on stone-work / metal-work of monument, base, sculpture)

Maker or Fabricator mark / name? If so, give name & location found

Please attach legible photographs of all text &/or Record the text in the space below. Please use the addendum – narrative sheet if necessary.

See Pictures for Details

Environmental Setting

(The general vicinity and immediate locale surrounding a memorial can play a major role in its overall condition.)

Type of Location

Cemetery Park Plaza/Courtyard "Town Square" Post Office
 School Municipal Building State Capitol Courthouse College Campus
 Traffic Circle Library Other: _____

General Vicinity

Rural (low population, open land) Suburban (residential, near city) Town Urban / Metropolitan

Immediate Locale (check as many as may apply)

Industrial Commercial Street/Roadside within 20 feet Tree Covered (overhanging branches)
 Protected from the elements (canopy or enclosure, indoors) Protected from the public (fence or other barrier)

Any other significant environmental factor Within the boundaries of a state historic site

[To detail the condition of a monument used the addendum form for *Monument's Condition*]

Supplemental Background Information

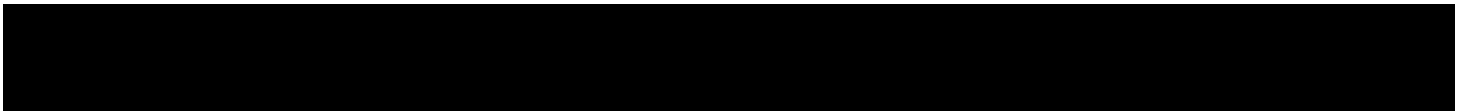
In addition to your on-site survey, any additional information you can provide on the described Memorial will be welcomed. Please label each account with its source (author, title, publisher, date, pages). Topics include any reference to the points listed on this questionnaire, plus any previous conservation treatments - or efforts to raise money for treatment.

Addendums attached to this electronic file are the *Monument's Condition* and the *Narrative* forms. Only the *Monument's Condition* form is required if you are requesting grant money using form CWM-62 *SUVCW Memorial Grant Application Form and Instructions*.

Thank you.

Inspector Identification _____ Date of On-site Survey 03 May 2018

Your Name Walt Busch & Sumner Hunnewell

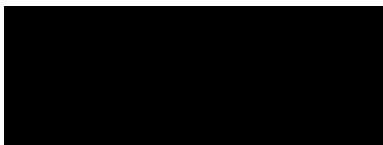


Are you a member of the Allied Orders of the G.A.R.? If so, which one?

Walt - US Grant Camp 68 SUVCW Sumner - Fletcher Camp 47

Please send this completed form to:

Walt Busch, PDC, Chair



Thank you for your help, and attention to detail.

SONS OF UNION VETERANS OF THE CIVIL WAR – CIVIL WAR MEMORIALS COMMITTEE.

American Civil War (1861 – 1865), THE BATTLE OF ATHENS

Aug. 5, 1861

Missouri State Guard Defends Southern Rights

In the spring of 1861, pro-Southern Missouri Gov. Claiborne F. Jackson called up the Missouri State Guard and U.S. Army troops. Martin Green, a Lewis County judge, farmer and sawmill operator, answered the call by forming State Guard units in northeast Missouri.

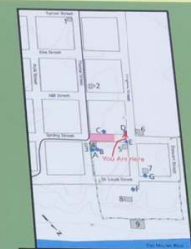
By mid-July, Green had amassed a large army of State Guard units, including three sons of the local pro-Union Home Guard commander, Col. David

Moore. On July 30, Green flew the Southern Rights flag in Edina, Mo. and recruited more men for the "lawful militia" of Missouri.

On Sunday Aug. 4, 1861, Col. Cyrus Franklin from Schuyler County and Maj. Benjamin Shacklett from Scotland County joined forces with Col. Green. They encamped on the Fox River near Chambersburg, Mo., seven miles from Athens. Early the next day they traveled to Athens to face the Home Guard.



Missouri State Guard units formed to protect and preserve "Southern Rights." Many citizens throughout Missouri supported this concept due to their Southern heritage. The Home Guard captured this flag at the Battle of Athens. The left side is re-created based on contemporary descriptions. Courtesy State Historical Society of Iowa



- LEGEND**
Hiking Trail
Hwy CC
Parking Lot
- BUILDINGS AND FOUNDATIONS**
1. Athens Methodist Church
2. Moreland House
3. Monument
4. Athens Stone Shelter*
5. Stone House
6. Smith Hotel
7. Callen Foundation
8. Banring House (Cannonball House)
9. Athens Mill Foundation
- INTERPRETIVE VIEWSIDES**
A. Athens Overview
B. Athens Stone
C. The Cannons Roar
D. Missouri State Guard
E. Athens and Missouri
F. First 1861 Missouri Home Guard
G. Aftermath
- *restrooms in shelter

"A more motley aggregation of white men and boys that accompanied Col. Green on that occasion was probably never collected together on this earth. They ranged in age from 12 to 75 or 80 old. The mixture of apparel and appearance was something wonderful to behold..."

– I.M. Walters, Clark County, Mo., resident



Col. Martin Green recruited pro-Southern Missouri State Guard troops in northeastern Missouri.



Maj. Benjamin Shacklett recruited and led pro-Southern Missouri State Guard troops from Scotland County, Mo.

American Civil War (1861 – 1865), THE BATTLE OF

Missouri State Guard Defends Southern Rights

In the spring of 1861, pro-Southern Missouri Gov. Claiborne F. Jackson called up the Missouri State Guard to oppose pro-Union Home Guard and U.S. Army troops. Martin Green, a Lewis County judge, farmer and sawmill operator, answered the call by forming State Guard units in northeast Missouri.

By mid-July, Green had amassed a large army of State Guard units, including three sons of the local pro-Union Home Guard commander, Col. David

Moore. On July 30, Green flew the Southern Rights flag in Edina, Mo. and recruited more men for the “lawful militia” of Missouri.

On Sunday Aug. 4, 1861, Col. Cyrus Franklin from Schuyler County and Maj. Benjamin Shacklett from Scotland County joined forces with Col. Green. They encamped on the Fox River near Chambersburg, Mo., seven miles from Athens. Early the next day they traveled to Athens to face the Home Guard.



Missouri State Guard units formed to protect and preserve “Southern citizens throughout Missouri supported this concept due to their support of the Home Guard captured this flag at the Battle of Athens. The flag is based on contemporary descriptions. Courtesy State Historical Society of Missouri.

“A more motley aggregation of white men and boys that accompanied Col. Green on that occasion was probably never collected together on this earth. They ranged in age from 12 to 75 or 80 old. The mixture of apparel and appearance was something wonderful to behold...”

– I.M. Walters, Clark County, Mo., resident



Col. Martin Green recruited pro-Southern Missouri State Guard troops in northeastern Missouri.



Maj. Benjamin Shacklett led pro-Southern Missouri troops from Scotland County.

During the Civil War (1861 – 1865), THE BATTLE OF ATHENS

Aug. 5, 1861

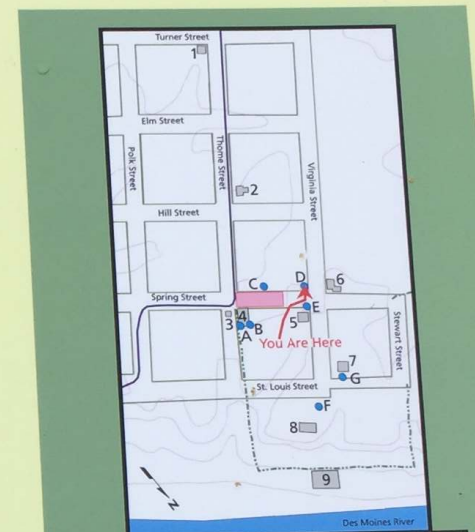
Home Guard Rights

On August 30, Green flew the Confederate battle flag in Edina, Mo. and recruited men for the "lawful Missouri Home Guard."

On August 4, 1861, Col. Cyrus W. Schuyler County and Maj. Benjamin Shacklett from Scotland County led forces with Col. Green. They met on the Fox River near Edina, Mo., seven miles from Athens. The next day they traveled to Athens to capture the Home Guard.



Missouri State Guard units formed to protect and preserve "Southern Rights." Many citizens throughout Missouri supported this concept due to their Southern heritage. The Home Guard captured this flag at the Battle of Athens. The left side is re-created based on contemporary descriptions. Courtesy State Historical Society of Iowa



LEGEND

- Hiking Trail (dashed line)
- Hwy CC (solid line)
- Parking Lot (pink rectangle)

BUILDINGS AND FOUNDATIONS

1. Athens Methodist Church
2. Moreland House
3. Monument
4. Athens Store Shelter*
5. Stone House
6. Smith Hotel
7. Colton Foundation
8. Benning House (Cannonball House)
9. Athens Mill Foundation

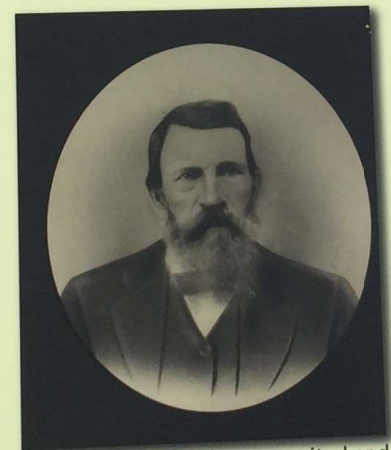
● INTERPRETIVE WAYSIDES

- A. Athens Overview
- B. Athens Store
- C. The Cannons Roar
- D. Missouri State Guard
- E. Athens and Missouri
- F. First NE Missouri Home Guard
- G. Aftermath

*restrooms in shelter



Col. Martin Green recruited pro-Southern Missouri State Guard troops in northeastern Missouri.



Maj. Benjamin Shacklett recruited and led pro-Southern Missouri State Guard troops from Scotland County, Mo.

and boys that was probably ranged in age from young to old..."
 Athens, Mo., resident

American Civil War (1861 – 1865), THE BATTLE OF ATHENS

Aug. 5, 1861

Missouri State Guard Defends Southern Rights

In the spring of 1861, pro-Southern Missouri Gov. Claiborne F. Jackson called up the Missouri State Guard to oppose pro-Union Home Guard and U.S. Army troops. Martin Green, a Lewis County judge, farmer and sawmill operator, answered the call by forming State Guard units in northeast Missouri.

By mid-July, Green had amassed a large army of State Guard units, including three sons of the local pro-Union Home Guard commander, Col. David

Moore. On July 30, Green flew the Southern Rights flag in Edina, Mo. and recruited more men for the "lawful militia" of Missouri.

On Sunday Aug. 4, 1861, Col. Cyrus Franklin from Schuyler County and Maj. Benjamin Shacklett from Scotland County joined forces with Col. Green. They encamped on the Fox River near Chambersburg, Mo., seven miles from Athens. Early the next day they traveled to Athens to face the Home Guard.



Missouri State Guard units formed to protect and preserve "Southern Rights." Many citizens throughout Missouri supported this concept due to their Southern heritage. The Home Guard captured this flag at the Battle of Athens. The left side is re-created based on contemporary descriptions. Courtesy State Historical Society of Iowa



LEGEND

Hiking Trail

Hwy CC

Parking Lot

"A more motley aggregation of white men and boys that accompanied Col. Green on that occasion was probably never collected together on this earth. They ranged in age from 12 to 75 or 80 old. The mixture of apparel and appearance was something wonderful to behold..."

— I.M. Walters, Clark County, Mo., resident

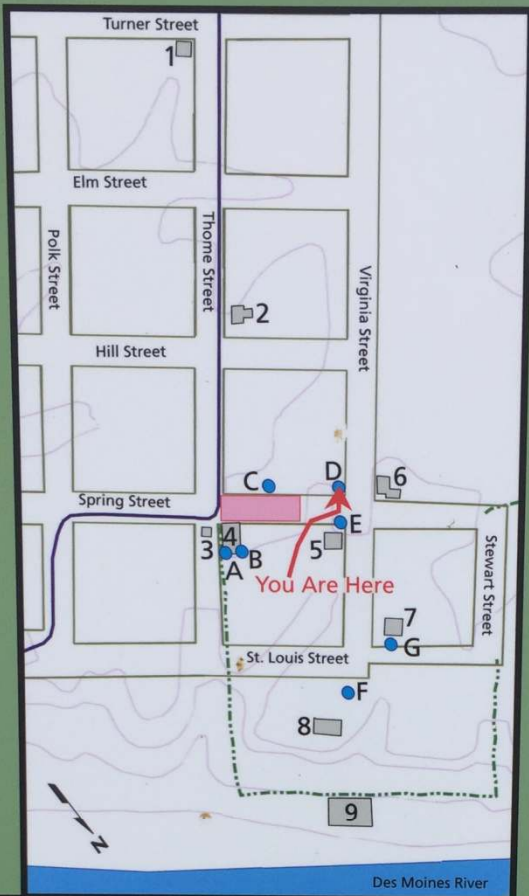


Col. Martin Green recruited pro-Southern Missouri State Guard troops in northeastern Missouri.



Maj. Benjamin Shacklett recruited and led pro-Southern Missouri State Guard troops from Scotland County, Mo.

*restrooms in shelter



LEGEND

- Hiking Trail - - - - -
- Hwy CC — — — — —
- Parking Lot

BUILDINGS AND FOUNDATIONS

1. Athens Methodist Church
2. Moreland House
3. Monument
4. Athens Store Shelter*
5. Stone House
6. Smith Hotel
7. Colton Foundation
8. Benning House (Cannonball House)
9. Athens Mill Foundation

● **INTERPRETIVE WAYSIDES**

- A. Athens Overview
- B. Athens Store
- C. The Cannons Roar
- D. Missouri State Guard
- E. Athens and Missouri
- F. First NE Missouri Home Guard
- G. Aftermath

*restrooms in shelter