

NATIONAL ORGANIZATION
SONS OF UNION VETERANS OF THE CIVIL WAR
CIVIL WAR MEMORIAL ASSESSMENT FORM

PLEASE:

- Type or print, using a ball-point pen, when filling out this form. Legibility is critical.
- Do not guess at the information. An answer of, "Unknown," is more helpful.
- Include a photograph of each viewable side and label it with name & direction of view.

- Thank You.

Type of Memorial

Monument *with* Sculpture ___ Monument with Cannon
 ___ Monument without Sculpture ___ Historical Marker ___ Plaque

Affiliation

___ G.A.R. (Post Name & No. _____) ___ M.O.L.L.U.S.
 ___ W.R.C. (Corps Name & No. _____) ___ Other Allied Order
 ___ SUVCW (Camp Name & No. _____) (Please describe below)
 ___ DUVCW (Tent Name & No. _____)
 Other: Donated to Town of Saugus by Henry E. Hone

Original Dedication Date July 4, 1895 Please consult any/all newspaper archives for a local paper's article that would have information on the *first* dedication ceremony and/or other facts on the memorial. Please submit a copy of your findings with full identification of the paper & date of publication. Thank you.

Location

The Memorial is *currently* located at:
 Street/Road address or site location Central/Main/Hamilton Streets
 City/Village _____ Township Saugus County Essex

The front of the Memorial faces: ___ North South ___ East ___ West

Government Body, Agency, or Individual Owner (of private cemetery that Memorial is located in)...

Name Town of Saugus Dept./Div. _____
 Street Address 298 Central Street
 City Saugus State MA Zip Code 01906
 Contact Person Joseph Adibado Telephone (781) 231-4144

If the Memorial has been moved, please list former location(s)...

Physical Details

Material of Monument or base under a Sculpture or Cannon = Stone ___ Concrete ___ Metal ___ Undetermined
 If known, name specific material (color of granite, marble, etc.) white granite

Material of the Sculpture = ___ Stone ___ Concrete Metal ___ Undetermined
 If known, name specific material (color of granite, marble, etc.) bronze
 If the Sculpture is of metal, is it solid cast or "hollow?" _____

Material of Plaque or Historical Marker / Tablet = _____

Material of Cannon = ___ Bronze ___ Iron - Consult known Ordnance Listing to confirm
 Markings on muzzle = _____

Markings on Left Trunion _____ Right Trunion _____
 Is inert ammunition a part of the Memorial? ___ If so, describe _____

Approximate Dimensions (indicate unit of measure) - taken from tallest / widest points

Monument or Base: Height 30' Width 20' Depth 20' or Diameter _____
 Sculpture: Height 6' Width _____ Depth _____ or Diameter _____

For Memorials with multiple Sculptures, please record this information on a separate sheet of paper for each statue and attach to this form. Please describe the "pose" of each statue and any weapons/implements involved (in case your photos become separated from this form). Thank you!

Markings/Inscriptions (on stone-work / metal-work of monument, base, sculpture)

Maker or Fabricator mark / name? If so, give name & location found _____

The "Dedication Text" is formed: ___ cut into material raised up from material face

Record the text (indicate any separation if on different sides...) Please use additional sheet if necessary.

THIS MONUMENT WAS PRESENTED TO THE
TOWN OF SAUGUS BY
HENRY E. HONE
AS A MEMORIAL OF THE PATRIOTISM OF HER SONS
WHO WENT FORTH TO BATTLE ON LAND AND SEA
FROM 1861 - 1865 FOR THE
PRESERVATION OF THE UNION
BY THEIR LOYALTY AND DEVOTION THEY HELPED
TO MAINTAIN THE FLAG OF OUR COUNTRY AS THE
EMBLEM OF EQUAL RIGHTS AND NATIONAL UNITY

Environmental Setting

(The general vicinity and immediate locale surrounding a memorial can play a major role in its overall condition.)

Type of Location

- | | | |
|--|--|--|
| <input type="checkbox"/> Cemetery | <input checked="" type="checkbox"/> Park | <input type="checkbox"/> Plaza/Courtyard |
| <input checked="" type="checkbox"/> "Town Square" | <input type="checkbox"/> Post Office | <input type="checkbox"/> School |
| <input type="checkbox"/> Municipal Building | <input type="checkbox"/> State Capitol | Other: _____ |
| <input type="checkbox"/> Courthouse | <input type="checkbox"/> College Campus | _____ |
| <input checked="" type="checkbox"/> Traffic Circle | <input type="checkbox"/> Library | _____ |

General Vicinity

- Rural (low population, open land) Suburban (residential, near city)
 Town Urban / Metropolitan

Immediate Locale (check as many as may apply)

- Industrial Commercial
 Street/Roadside within 20 feet Tree Covered (overhanging branches)
 Protected from the elements (canopy or enclosure, indoors)
 Protected from the public (fence or other barrier)
 Any other significant environmental factor _____

Condition Information

Structural Condition (check as many as may apply)

The following section applies to Monuments *with* Sculpture, and Monuments without Sculpture - including the base for Monuments with *Cannon*. Instability in the sculpture and its base can be detected by a number of factors. Indicators may be obvious or subtle. Visually examine the sculpture and its base.

	Sculpture	Base
If hollow, is the internal support unstable/exposed? (look for signs of exterior rust)	___	___
Any evidence of structural instability? (look for cracked joints, missing mortar or caulking or plant growth)	___	___
Any broken or missing parts? (look for elements (i.e., sword, musket, hands, arms, etc. - missing due to vandalism, fluctuating weather conditions, etc.)	___	___
Any cracks, splits, breaks or holes? (also look for signs of uneven stress & weakness in the material)	___	___

Surface Appearance (check as many as may apply)

	Sculpture	Base
Black crusting	___	___
White crusting	___	___
Etched, pitted, or otherwise corroded (on metal)	___	___
Metallic staining (run-off from copper, iron, etc.)	<input checked="" type="checkbox"/>	___
Organic growth (moss, algae, lichen or vines)	___	<input checked="" type="checkbox"/>
Chalky or powdery stone	___	___
Granular eroding of stone	___	<input checked="" type="checkbox"/>
Spalling of stone (surface splitting off)	___	___
Droppings (bird, animal, insect remains)	___	___
Other (e.g., spray paint graffiti) - Please describe...	___	___

Acid Rain

Does water collect in recessed areas of the Memorial? ___ Yes ___ No Unable to tell

Surface Coating

Does there appear to be a coating? Yes No Unable to determine
 If known, identify type of coating.

Gilded Painted Varnished Waxed Unable to determine
 Is the coating in good condition? Yes No Unable to determine

Basic Surface Condition Assessment (check one)

In your opinion, what is the general appearance or condition of the Memorial?
 Well maintained Would benefit from treatment In urgent need of treatment Unable to determine

Overall Description

Briefly describe the Memorial (affiliation / overall condition & any concern not already touched on).

Supplemental Background Information

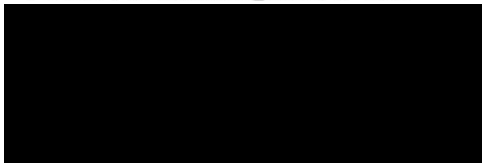
In addition to your on-site survey, any additional information you can provide on the described Memorial will be welcomed. Please label each account with its source (author, title, publisher, date, pages). Topics include any reference to the points listed on this questionnaire, plus any previous conservation treatments - or efforts to raise money for treatment. Thank you.

Inspector Identification

Date of On-site Survey 06/27/2004
 Your Name _____
 Address _____ City _____
 State _____ Zip Code _____ Telephone () _____

Please send this completed form to:

Todd A. Shillington, PCC



Thank you for your help, and attention to detail.

SONS OF UNION VETERANS OF THE CIVIL WAR
 National Civil War Memorials Committee

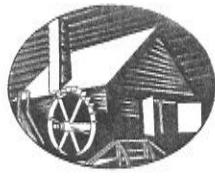




THIS MONUMENT WAS PRESENTED TO THE
TOWN OF SAUGUS BY
HENRY E. HONE,
AS A MEMORIAL OF THE PATRIOTISM OF HER SOUS
WHO WERE DEAD TO SAUGUS ON LAND AND SEA
FROM 1861 - 1865 FOR THE
PRESERVATION OF THE UNION
BY THEIR BRAVERY AND DEVOTION THEY ASPIRED
TO MAINTAIN THE PRINCIPLES OF OUR COUNTRY AS THE
EMBLEM OF SOCIAL RIGHTS AND NATIONAL UNITY

WINK





Your favorite menus inside

SAUGUS ADVERTISER

COMMUNITY NEWSPAPER COMPANY

THURSDAY, MARCH 20, 2008

www.wickedlocalsaugus.com

CTIONS • 60 PAGES • \$1.00

Wine license granted to White Hen

application, according to Selectman Peter Rossetti Jr.

But Rossetti told the *Advertiser* the matter was referred back to an ABCC investigator when attorney Nelson Chang appealed the decision on behalf of White Hen Pantry.

After further review White Hen Pantry was able to work out questions over its corporate agreement and the investigator recommended approval of the beer and wine package store license, Rossetti said.

With the ABCC ruling handed down,

all White Hen Pantry has to do to sell beer and wine is pay the town \$2,000 for its license, explained Board of Selectmen clerk Wendy Reed.

Calls to White Hen Pantry owner Moujib Hamza and Chang asking if the convenience store still plans to sell beer and wine on site weren't returned.

If the \$2,000 payment is made, White Hen Pantry would become the only convenience store in Saugus that has a beer and wine package store license. The town is allotted a total of six of these licenses, but Reed said none of them are

currently being used.

Local reactions

Selectman Michael Kelleher was dismayed to learn the ABCC upheld White Hen Pantry's appeal. He noted he has been against granting the convenience store a beer and wine package store license from the very start and even sent the ABCC a letter to express his opposition to the idea.

When the issue first appeared before the board, Kelleher and Janette Fasano

► SEE **WHITE HEN**, PAGE 11

Public invited to inspect new values

Next week Saugus residents can view their brand new property assessments at the Town Hall assessor's office and the library.

The Massachusetts Department of Revenue has conducted an extensive review of Saugus property values, and preliminary certification of all values is pending the DOR's approval.

The proposed fiscal year 2008 property assessments will be available for public inspection at the Assessor's office and the Saugus Public Library from Monday, March 24 to Friday, March 28.

For more details, see Page 3.

Sappy time

flock
art
Sugarin'

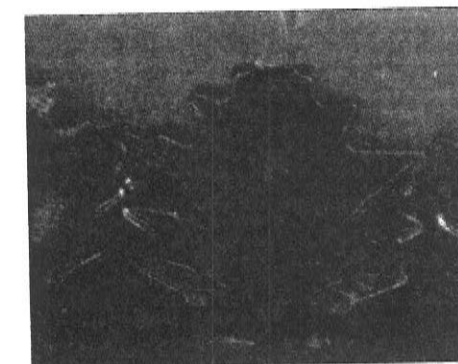
ving freely from
akheart Reserva-
as the first offi-
ng arrives Thurs-

nce to experience
hat goes into pro-
the annual Maple
l at Breakheart
end.

io slide show of
garin' at wicked-

place the jump

sting exhibit, the
gus — Salvatore,
s — had great fun
pancakes" as they
giant two-person
gs. The cut wood
EE **SUGAR**, PAGE 5



are the finished product.



Ed Murray, right, Chairman of the Board of the Friends of Breakheart Reservation, explains the history of maple sugaring.



Twin brothers Matthew, left, and Kyle Cotoia, 6, watch the sap drip slowly into the bucket.

STAFF PHOTOS BY ROBERT BRANCH

The story behind the statue

Civil War Memorial is 'something special'

By Mike Gaffney
mgaffney@cnc.com

When it comes to Civil War memorials, Saugus can claim bragging rights for owning a first-rate monument crafted by one of the most distinguished local sculptors of the 19th century.

The 30-foot-tall Civil War memorial located at the Saugus Center Rotary was the creation of Melzar Hunt Mosman, a former soldier in the Civil War renowned for casting bronze figures for monuments after the hostilities subsided between the North and South.

Kevin Tucker, a Wakefield resident who serves as the national Civil War memorials officer for the Sons of Union Veterans of the Civil War, dug up this nugget after viewing a brochure that depicted the monument in Selectman Peter Rossetti Jr.'s office.

From his first glance at the image, Tucker knew Saugus had something special. What struck him immediately was the intricate craftsmanship of the monument.



PHOTO BY MIKE GAFFNEY

This bronze soldier adorns the side of the Civil War Memorial inside the Saugus Center rotary. The monument honors the 160 Saugus residents who fought in the Civil War.

► SEE **STATUE**, PAGE 6

Mapping the in charter

A meaty experience

Brazilian barbeque opens in Saugus

By Kathryn O'Brien

BUSINESS



The story behind the statue

Vacation in Your Back Yard!

SALE '07 Prices, FREE AutoVac, we'll pay your Sales Tax*

FREE POOL TOY with this ad
CNC

- Complete pool package
- 45 years experience in the pool industry
- FREE how-to seminars
- FREE computerized water analysis, including professional advice
- Certified Service Technicians & Certified Pool Operators Available 7 days
- * Expires 3-25-08



Budget Pools

POOLS • SPAS • PARTS • ACCESSORIES
TECHNICAL SUPPORT

APSP
The Association of Pool & Spa Professionals

Rte 1 • Peabody • (978) 535-1500 • OPEN 7 DAYS

► **STATUE, FROM PAGE 1**

Impressed by the memorial, Tucker decided to conduct a little research on its origin. He eventually traced its roots to Mosman, a prominent sculptor affiliated with the Chicopee-based Ames Sword and Bronze Company who crafted dozens of monuments honoring the soldiers who served in the Civil War and Spanish American War.

"He was one of the few sculptors who actually fought in the Civil War and then created monuments for that same conflict," Tucker said, noting the majority of Civil War memorials were commissioned in the 1900s.

Mosman is most well known for casting a variety of pieces for Augustus Saint-Gaudens, the Irish-born sculptor who received acclaim for his monuments commemorating heroes of the Civil War.

Among Mosman's career highlights was receiving the commis-

sion for an 8-ton equestrian statue of General Ulysses. S. Grant in Chicago's Lincoln Park, as well as casting the west doors of the U.S. House of Representatives.

Tucker explained Mosman's considerable skill is evident in the attention to detail he displays. The Saugus Civil War Memorial consists of a tall granite monument topped with an allegorical female figure that is meant to represent the United States.

This female wears a helmet with an eagle on the top and holds a shield in her right hand. Below her on pedestals to both sides are bronze figures of a sailor and soldier, with reliefs of laurel wreaths adorning the base of each figure.

"The quality is clear in the detail Mosman put into the facial expressions; this is truly a fine work of art," Tucker said. "There are few war memorials of this quality in the area."

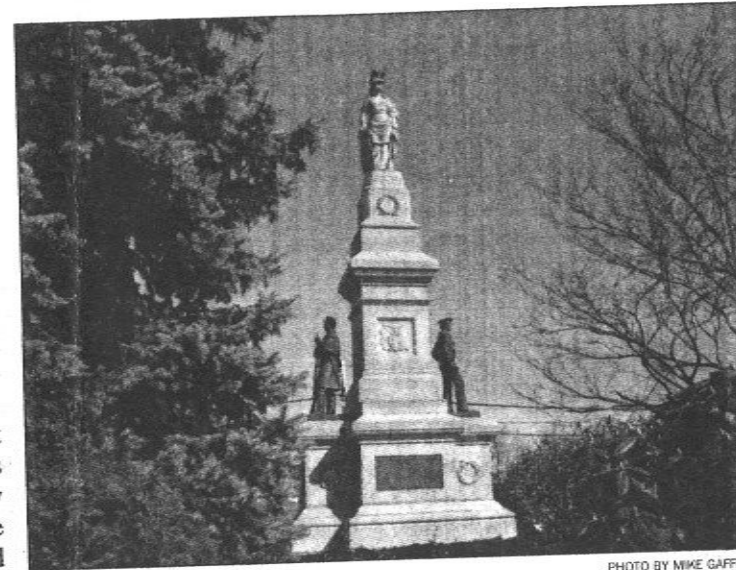


PHOTO BY MIKE GAFFNEY

The 30-foot-high Civil War Memorial is the featured centerpiece of the Saugus Center rotary. It was crafted by Melzar Hunt Mosman, a Civil War veteran who made a name for himself after the war ended by casting bronze monuments across the country.

A fitting tribute

According to the Smithsonian American Art Museum sculpture database, the Saugus Civil War memorial was erected in 1875. The names of 160 men who fought in the war appear on plaques located on the sides and back of the base.

The memorial was the gift of Henry E. Hone of North Saugus, who spent \$10,000 on the bronze and granite structure.

More than a century later, Tucker estimated the memorial is valued in the hundreds of thousands. Rossetti contended the structure is actually priceless given its noteworthy history and the fact it pays homage to Saugus veterans who served in the Civil War.

"We're extremely fortunate to have a Mosman sculpture here in Saugus," Rossetti said. "It's pretty impressive to behold."

One negative is that the memorial is somewhat obstructed by an evergreen tree on the rotary. To better showcase this source of town pride, Rossetti plans to request the Forestry Department to see what can be done to make the monument more visible to passing motorists and pedestrians.

Tucker recommended that residents take a few moments out of their busy schedules to stop by and admire the Civil War memorial.

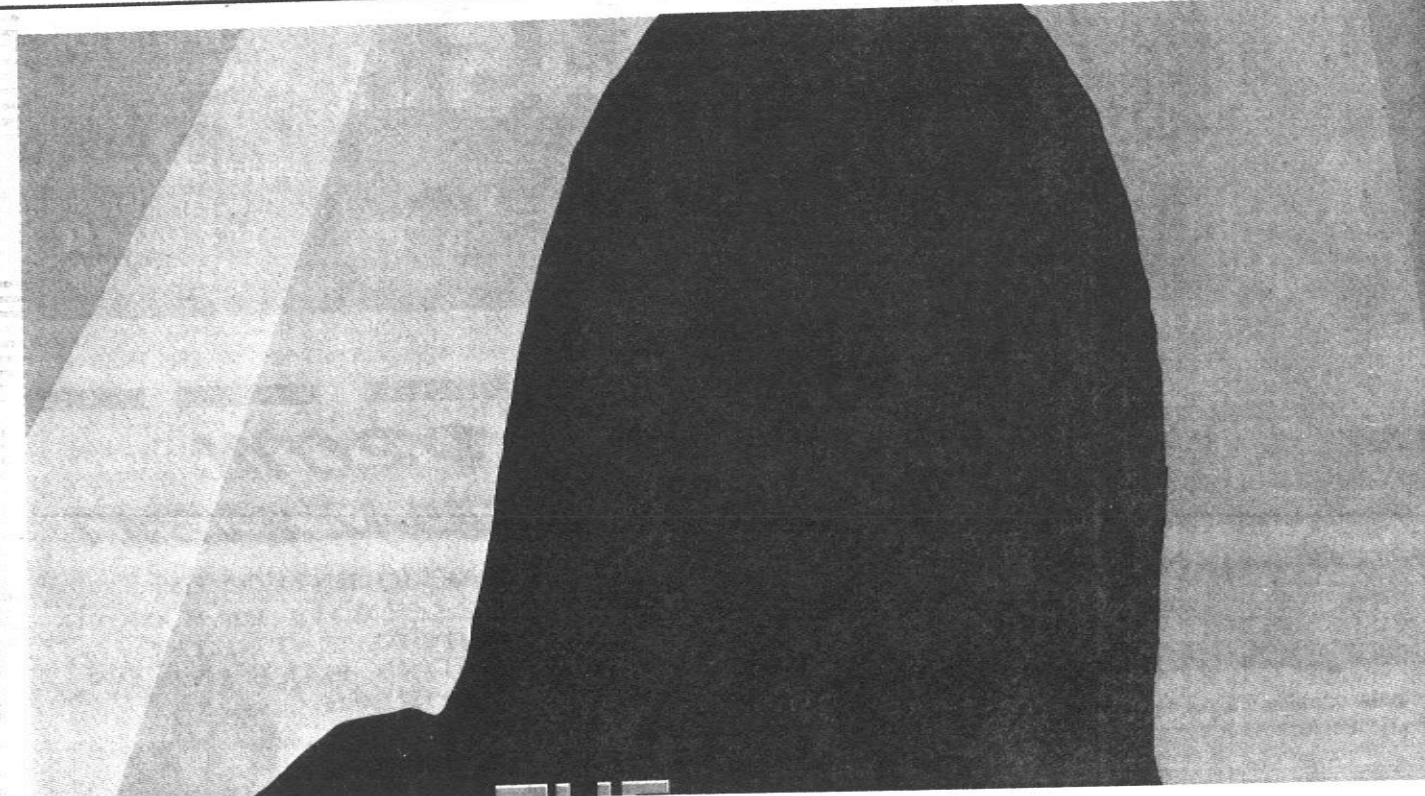
"This is definitely something Saugus should be proud of," Tucker said.

Reshaping the town charter

► **CHARTER, FROM PAGE 1**
and plan one more in April.

At last week's public hearing, a handful of concerned citizens

hours to better serve the community?" or "Would you like to see your board/committee meeting televised on local cable?"



Thursday, March 27
Saugus Advertiser

and verify that the town's
homeowner who has downsized to only two bath-
rooms, but is listed as having three baths, would want
to alert the assessors so the home value can be changed
to reflect the correct amount. Property owners should
report any errors to the deputy assessor this week so
that they can be corrected.

Any taxpayers who are aggrieved by their new
assessed value can apply for an abatement within 30
days after the bill is mailed. The assessors will then
review and reply to the abatement request within a 90-
day period.

When filing an abatement, property owners are
urged to do their homework and prepare at least three
comparable sales transactions from 2006 involving the
total property valuation, not just the building or the land
value by themselves.

Anyone who cites "high taxes" as a reason for an
abatement will not succeed, because the assessors have
no control over the amount of tax dollars. Their main
duty is the property valuation.

The new values may seem slightly shocking to some
residents, given that the new assessments are based on
higher '06 property sales, not the reduced values of
2008. The town is obligated to follow the practices set
by the state, and the 2006 values are the required num-
bers.

"As far as the state is concerned, our values are fair,"
stressed Keohan this week. "These public disclosure
numbers are what the state has certified."

Stressing that the new 2008 assessments for single-
two- and three-family homes are within 97-98 percent
of the 2006 arms-length sales transactions, the Saugus
assessors stressed in a press release this week that most
of the adjustments made on values were "relatively
minor" and most adjustments were the result of proper-
ty inspections conducted over the past year. (See story
"Assessors explain the process" for more specific
details.)

The bottom line is that Proposition 2 1/2 restricts the
amount of money a town can raise each year. Even if
the 2006 sales prices are higher than the current market
prices, the town can only raise a set amount of revenue
through the tax levy — just 2 1/2 percent over last year
plus any new growth.

So this week home and business owners would be
wise to check over the latest figures from Town Hall
and make sure that the deputy assessor has the correct
information.

On Tuesday, April 8, the selectmen are expected to
conduct a public hearing and vote on the tax classifica-
tion for the town, which will allow the town to go ahead



Letters to the Editor

Story behind the statue

To the editor:
Saugus' Civil War Monument is indeed a fine example of Mosman's work and is one of the most attractive soldiers and sailors monuments in New England. It was actually erected in 1895, not 1875, and dedicated on July 4 of that year. Among the soldiers listed on

the monument is John Henry Hone, the son of the donor Henry Hone. John Henry Hone served three years in 22nd regiment Massachusetts Volunteers. Father and son are buried in Riverside Cemetery.

The large spruce on the island is special in that it is the only tall specimen in a planting of shrubs,

and it is the dominant supporter of the holiday light display, which enlivens the town center in winter. Spruce do not take well to pruning, so it is unlikely the size of the tree could be successfully reduced. While its size and location is awkward, the tree does not really obscure the major figures and as people drive around the rotary they

can still see the figures from all angles, and all the names can still be read by someone walking on the traffic island. Uplights on the ground, focused on the monument, might be a good way of showing it off at night.

Laura D. Eisener
Oakcrest Street
Saugus

A full recovery

To the editor:

My name is John Coburn and I am a sergeant on the Saugus Police Department. On the morning of Dec. 27, I was on duty inside the police station as the commanding officer. At approximately 2 a.m., I suffered a full cardiac arrest. According to my heart surgeon and my cardiologist, my heart had stopped beating before I fell to the floor. Inside the same room in the station was several of my brother officers. My brothers immediately started and performed CPR on me. After the emergency action at the station and after a quad-

return to work very shortly. I will never forget and I will always cherish my "brothers" — Sgt. Lenny Campanello, Officer David Gecoya, Officer Michael Richards, Officer Jason LaBella and Dispatcher John Dinochie.

I would also like to thank the members of Saugus Fire Department and the Cataldo Ambulance Paramedics who were on duty at the time as they also helped in keeping me alive and stable during the trip to the hospital. May God bless you all.

Finally, I would like to thank my

