

NATIONAL ORGANIZATION SONS OF UNION VETERANS OF THE CIVIL WAR

CIVIL WAR MEMORIAL ASSESSMENT FORM

PLEASE:

- Type or print, using a ball-point pen, when filling out this form. Legibility is critical.
- Do not guess at the information. An answer of, "Unknown," is more helpful.
- Include a photograph of each viewable side and label it with name & direction of view.

- Thank You.

Type of Memorial

- Monument *with* Sculpture Monument with Cannon
 Monument without Sculpture Historical Marker Plaque

Affiliation

- G.A.R. (Post Name & No. McHenry 692) M.O.L.L.U.S.
 W.R.C. (Corps Name & No. _____) Other Allied Order
 SUVCW (Camp Name & No. _____) (Please describe below)
 DUVCW (Tent Name & No. _____)
 Other: _____

Original Dedication Date 9-1-1889 Please consult any/all newspaper archives for a local paper's article that would have information on the *first* dedication ceremony and/or other facts on the memorial. Please submit a copy of your findings with full identification of the paper & date of publication. Thank you.

Location

The Memorial is *currently* located at:
 Street/Road address or site location Lake Avenue Cemetery
 City/Village Crystal Lake Township Crystal Lake County McHenry

The front of the Memorial faces: North South East West

Government Body, Agency, or Individual Owner (of private cemetery that Memorial is located in)...

Name Crystal Lake Hist. Society Dept./Div. _____
 Street Address LAKE AVENUE CEMETERY
 City _____ State IL Zip Code 60037
 Contact Person Diana Kenney Telephone (815) 455-1151

If the Memorial has been moved, please list former location(s)...

Physical Details

Material of Monument or base under a Sculpture or Cannon = Stone Concrete Metal Undetermined
 If known, name specific material (color of granite, marble, etc.) ZINC - white washed

Material of the Sculpture = ___ Stone ___ Concrete Metal ___ Undetermined
If known, name specific material (color of granite, marble, etc.) Zinc Gray
If the Sculpture is of metal, is it solid cast or "hollow?" CAST

Material of Plaque or Historical Marker / Tablet = _____

Material of Cannon = ___ Bronze ___ Iron - Consult known Ordnance Listing to confirm
Markings on muzzle = _____

Markings on Left Trunion _____ Right Trunion _____

Is inert ammunition a part of the Memorial? NO If so, describe _____

Approximate Dimensions (indicate unit of measure) - taken from tallest / widest points

Monument or Base: Height 8' Width 6' Depth 6' or Diameter _____

Sculpture: Height _____ Width _____ Depth _____ or Diameter _____

For Memorials with multiple Sculptures, please record this information on a separate sheet of paper for each statue and attach to this form. Please describe the "pose" of each statue and any weapons/implements involved (in case your photos become separated from this form). Thank you!

Markings/Inscriptions (on stone-work / metal-work of monument, base, sculpture)

Maker or Fabricator mark / name? If so, give name & location found _____

The "Dedication Text" is formed: ___ cut into material raised up from material face

Record the text (indicate any separation if on different sides...) Please use additional sheet if necessary.

VICKSBURG - SHILOH - GETTYSBURG - STONE RIVER

ERECTED BY GRATEFUL CITIZENS IN HONOR OF THE BOWE DEFENDERS
OF OUR COUNTRY

Environmental Setting

(The general vicinity and immediate locale surrounding a memorial can play a major role in its overall condition.)

Type of Location

- | | | |
|--|--------------------|---------------------|
| <input checked="" type="checkbox"/> Cemetery | ___ Park | ___ Plaza/Courtyard |
| ___ "Town Square" | ___ Post Office | ___ School |
| ___ Municipal Building | ___ State Capitol | Other: _____ |
| ___ Courthouse | ___ College Campus | _____ |
| ___ Traffic Circle | ___ Library | _____ |

General Vicinity

Rural (low population, open land)
 Suburban (residential, near city)
 Town
 Urban / Metropolitan

Immediate Locale (check as many as may apply)

Industrial Commercial
 Street/Roadside within 20 feet Tree Covered (overhanging branches)
 Protected from the elements (canopy or enclosure, indoors)
 Protected from the public (fence or other barrier)
 Any other significant environmental factor _____

Condition Information

Structural Condition (check as many as may apply)

The following section applies to Monuments *with* Sculpture, and Monuments without Sculpture - including the base for Monuments with *Cannon*. Instability in the sculpture and its base can be detected by a number of factors. Indicators may be obvious or subtle. Visually examine the sculpture and its base.

	Sculpture	Base
If hollow, is the internal support unstable/exposed? (look for signs of exterior rust)	___	___
Any evidence of structural instability? (look for cracked joints, missing mortar or caulking or plant growth)	___	___
Any broken or missing parts? (look for elements (i.e., sword, musket, hands, arms, etc. - missing due to vandalism, fluctuating weather conditions, etc.)	<input checked="" type="checkbox"/>	___
Any cracks, splits, breaks or holes? (also look for signs of uneven stress & weakness in the material)	___	___

Surface Appearance (check as many as may apply)

	Sculpture	Base
Black crusting	___	___
White crusting	___	___
Etched, pitted, or otherwise corroded (on metal)	___	___
Metallic staining (run-off from copper, iron, etc.)	___	___
Organic growth (moss, algae, lichen or vines)	___	___
Chalky or powdery stone	___	___
Granular eroding of stone	___	___
Spalling of stone (surface splitting off)	___	___
Droppings (bird, animal, insect remains)	<input checked="" type="checkbox"/>	___
Other (e.g., spray paint graffiti) - Please describe...		

Figure of infantry soldier with musket knocked off and ~~was~~ destroyed in 2005.

Does water collect in recessed areas of the Memorial? ___ Yes No ___ Unable to tell

Surface Coating

Does there appear to be a coating? Yes No Unable to determine
 If known, identify type of coating.

Gilded Painted Varnished Waxed Unable to determine

Is the coating in good condition? Yes No Unable to determine

Basic Surface Condition Assessment (check one)

In your opinion, what is the general appearance or condition of the Memorial?

Well maintained Would benefit from treatment In urgent need of treatment Unable to determine

Overall Description

Briefly describe the Memorial (affiliation / overall condition & any concern not already touched on).

Ornate Column on Cemetery Traffic circle. Fundraising in Progress to
Replace scidies for top of Column.

Supplemental Background Information

In addition to your on-site survey, any additional information you can provide on the described Memorial will be welcomed. Please label each account with its source (author, title, publisher, date, pages). Topics include any reference to the points listed on this questionnaire, plus any previous conservation treatments - or efforts to raise money for treatment. Thank you.

Inspector Identification


Date of On-site Survey 4-1-2010

Your Name Greg Center

Address 1408 26th ST.

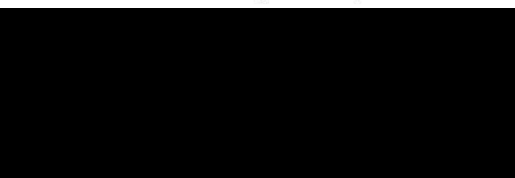
City Rockford

State IL Zip Code 61108

Telephone 

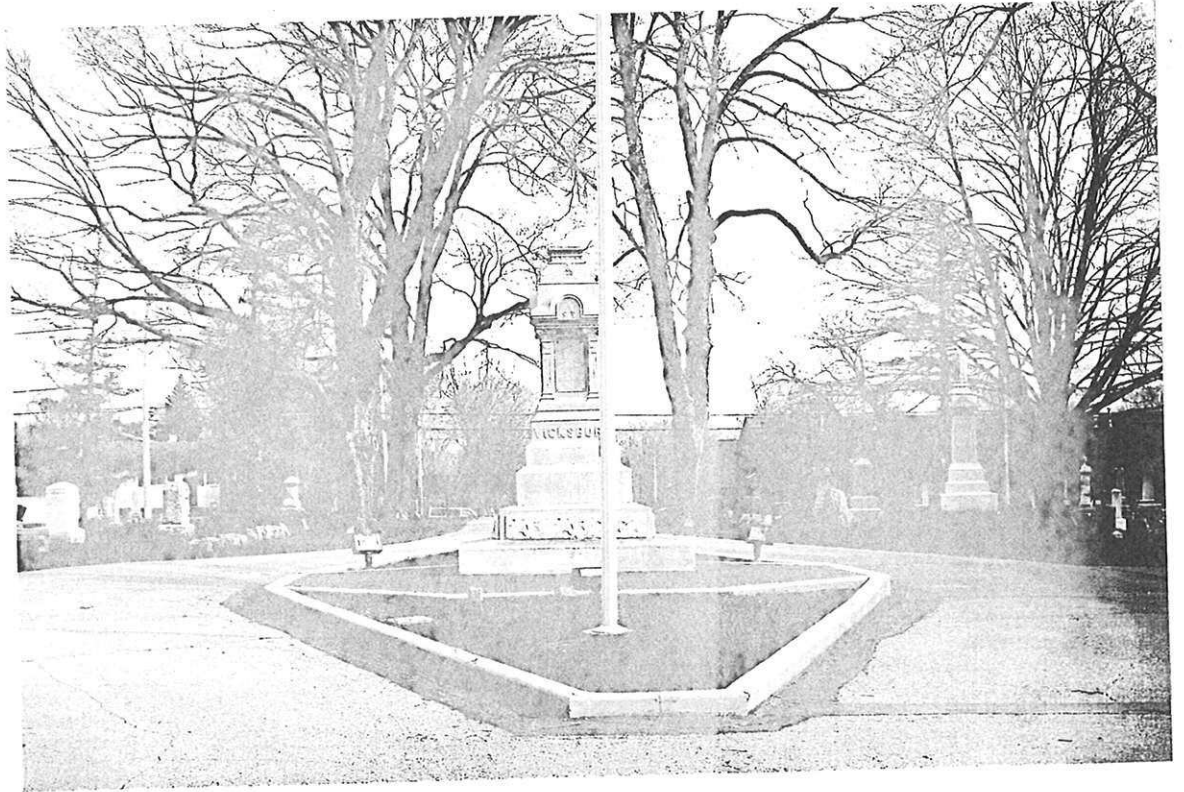
Please send this completed form to:

Kevin P. Tucker, PDC, Chair

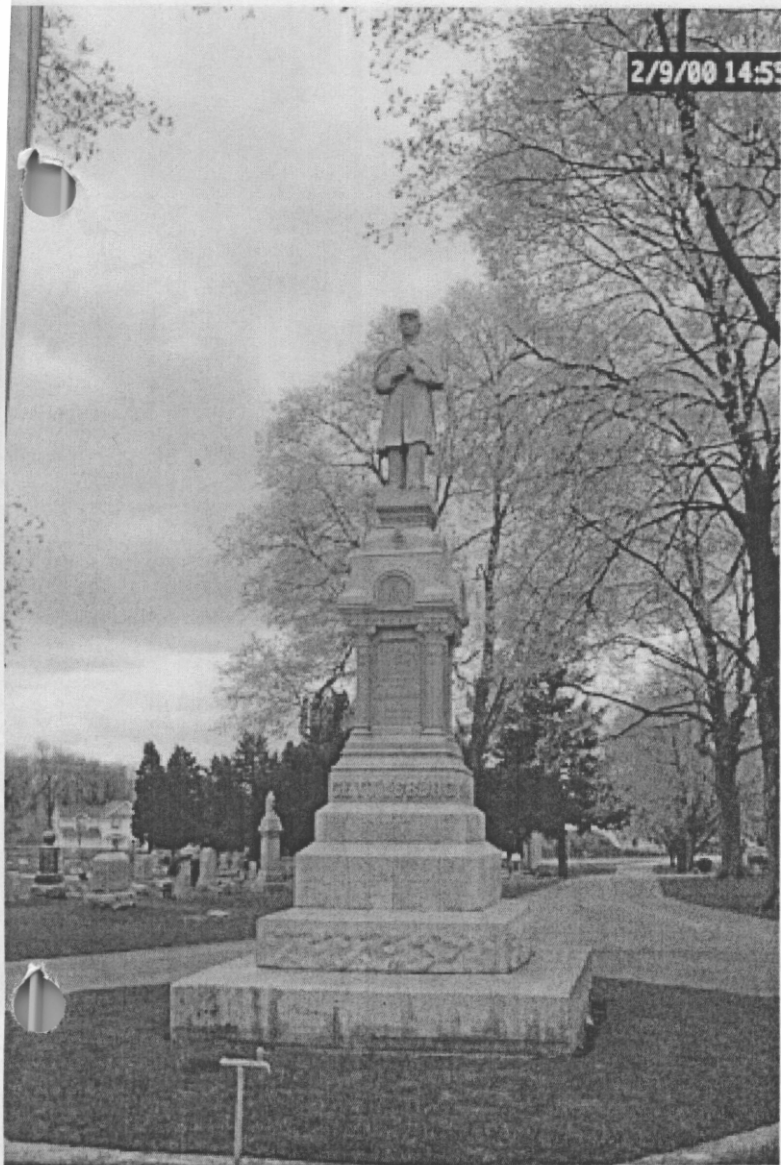


Thank you for your help, and attention to detail.

SONS OF UNION VETERANS OF THE CIVIL WAR
 National Civil War Memorials Committee



2/9/00 14:55



Crystal Lake
Pre-vandalism.

McHenry County

2012 Restoration

This web page details background, history, and the successful Union Soldier Statue Restoration Project. Although the statue has been restored and is once again standing tall in Union Cemetery, the Society continues to raise funds for the perpetual care and enhancement of the Veterans Concourse which surrounds the statue. Examples of anticipated future fund use include: enhanced landscaping, periodic flag replacement, and electrical/lighting maintenance. All donations received will be held under the stewardship of the Crystal Lake Historical Society. The Society will continue to work closely with the American Legion and Union Cemetery Board of Directors to determine maintenance needs.



Veterans Concourse Brick Paver Program

2012 Restoration

Brick pavers are being offered to honor United States veterans of all eras. The engraved brick pavers are placed in the Veterans Concourse surrounding the Union Soldier Statue.

Brick pavers are \$150. Download the Union Soldier Paver order form. Please mail to:

Crystal Lake Historical Society, P.O. Box 1151, Crystal Lake, IL 60039-1151

OR you can order your brick paver through the Society's eStore online. In addition to the engraved brick paver for the Veterans' Concourse, you will receive:

- Mini brick which can be displayed in your home
- Knowledge that you are providing a lasting tribute to your veteran

Each 4" x 8" brick paver will be engraved using state of the art laser technology with a lifetime guarantee to never fade, chip, oxidize or peel. This lasting tribute will be a physical demonstration of your sincere appreciation of your veteran's efforts.



Statue Restoration Project (2006-2012)

Background

Just off Woodstock Street in the heart of Crystal Lake stood a faithful Union Soldier, cast in zinc, which had been steadfastly on guard for well over a century. He has performed the mission assigned to him on September 11, 1889 when, according to the plaque on his base, he was “ERECTED BY GRATEFUL CITIZENS, IN HONOR OF THE BRAVE DEFENDERS OF OUR COUNTRY.”

While this monument was originally intended to pay tribute to veterans of the Civil War, it has also served as a reminder of selfless sacrifice and heroism for subsequent generations. Each year on Memorial Day, the citizens of Crystal Lake have marched together and gathered at the foot of this monument to pay tribute to those who have served through many different wars and conflicts to uphold the ideals of our nation. For the current generation to continue this time honored tradition, our challenge is to restore and preserve this memorial now for generations to come.

Monument Facts

Manufactured by American Bronze Company, Chicago, IL, a subsidiary of Monumental Bronze Company, Bridgeport, CT. Statue and base cast in zinc (originally marketed as “white bronze”)

- Statue and base cast in zinc (originally marketed as “white bronze”)
- Unveiled September 11, 1889 in accordance with the ceremonies of the Grand Army of the Republic.
- The monument is 18-1/2 feet tall
- The names of four major Civil War battles are inscribed: Gettysburg, Shiloh, Vicksburg, and Stone River
- The names of 379 area veterans are inscribed on the memorial, including veterans who survived the Civil War, those killed in action, those who died in Andersonville Prison, those who died while in the service, and surviving area veterans of the War of 1812.



CEREMONY!

To observe the establishment of

The Union Cemetery Veterans Concourse

The ceremony will include the unveiling
the Union Cemetery Veterans Concourse
marker stone, and a brick paver
installation ceremony.

The ceremony will be held at
Union Cemetery

Wednesday, November 11th
The ceremony will commence at
1:00 o'clock PM.

Save Our Soldier!



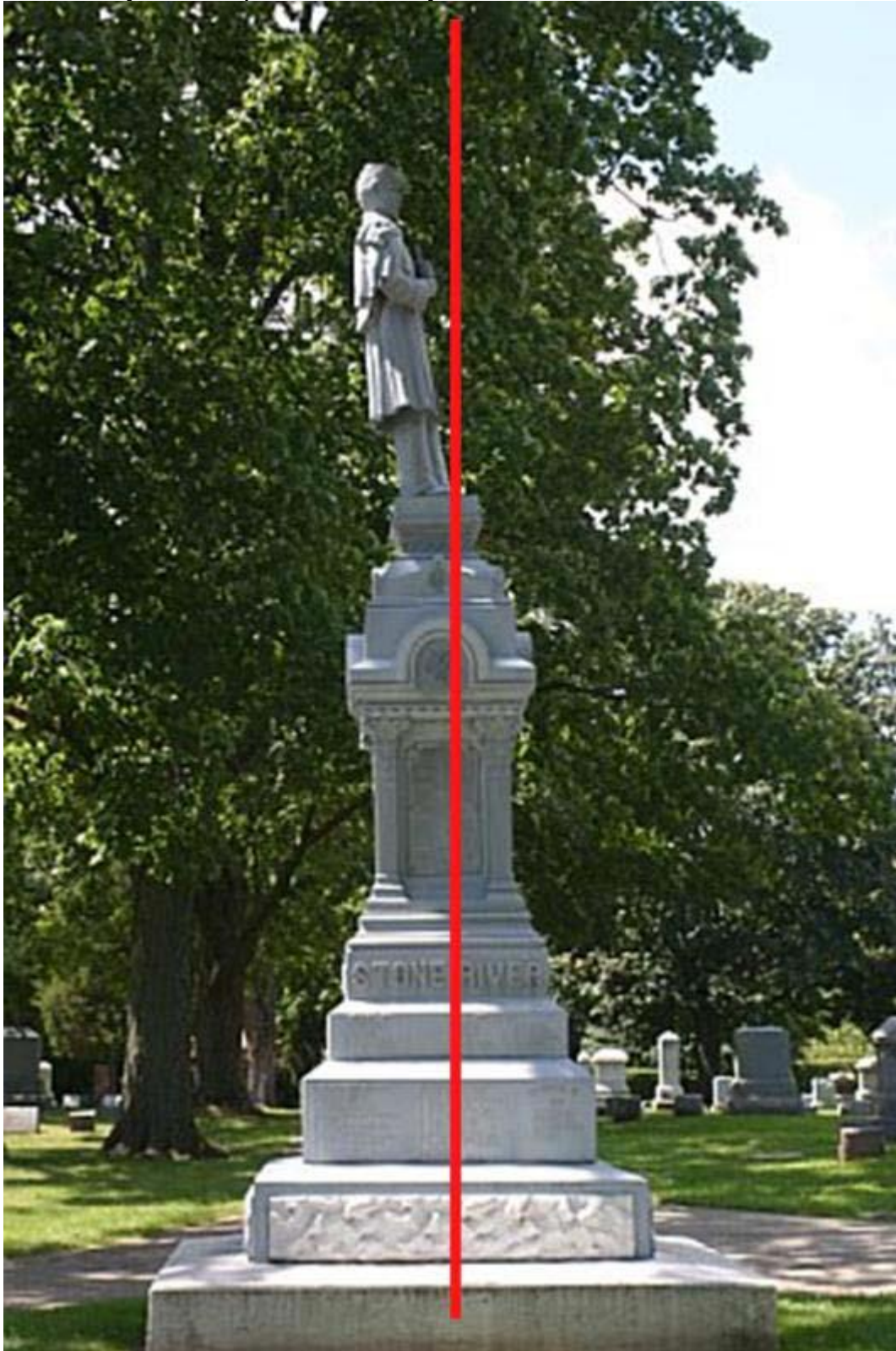
caption: This early postcard image shows the statue (circa 1905)

State of Disrepair

The years had not been easy on this Union Soldier. The structural integrity of the statue has been compromised by exposure to the elements. Cracks have formed and water has infiltrated the interior of the monument. The base was bulging from the stress, and the figure of the soldier was leaning backwards in a precarious position. An art conservator who inspected the monument urged that we take the statue down before it falls and is irreparably damaged.

2012 Restoration

Additionally, at some point in its history, the musket was stolen from the soldier's arms.



Statue Removal

2012 Restoration

The Union Soldier Statue was leaning backwards at an alarming angle! The decision was made to remove the statue BEFORE it fell down and was irreparably damaged.

The statue removal was marked with a “Guard Relief” ceremony on November 10, 2006. Art conservator, Andrzej Dajnowski was on-hand to oversee the removal operation. A local roofing company, Copley Roofing, donated the use of a large crane and equipment to allow for safe removal of the statue.

The Soldier was placed into safe storage, until enough funds were raised to start the restoration.

Photos of “Guard Relief” ceremony and statue removal:

Project Scope

Time, weather and individuals have not been easy on this Soldier, and he was in desperate need of restoration. To organize the means to restore the statue, the Crystal Lake Historical Society formed the Union Soldier Statue Restoration Committee, to work on the project and establish a special fund to cover the costs of the work.

The scope of the entire restoration project included the following work:

- Return the statue to an upright position
- Strengthen the internal support structure of the statue and base
- Replacement of missing rifle
- Relocate flagpole behind the existing memorial
- Install lighting around memorial for nighttime display and additional security
- Create Union Cemetery Veterans Concourse (brick pavers honoring veterans)
- Landscape Veterans Concourse and area surrounding memorial

The total cost of this restoration effort was approximately \$60,000. The cost to restore the soldier sculpture alone was \$20,000.

Internal X-Rays

In order to determine the damage to the internal support structure of the statue, x-rays were taken of the statue. These provide a fascinating view of “our” soldier:

Completed Base and Landscape Project

Through the efforts of numerous individuals and organizations, the first phase of restoration transformed the monument base and landscape, including:

- Memorial base supports installed
- Base concrete interior repaired
- New curbing installed
- Veteran pavers installed

2012 Restoration

- Flagpole moved
- Electrical service and lighting installed
- Dedication stone installed

Fundraising

Fundraising for the Union Soldier Statue restoration began in 2006 and is ongoing in order to maintain and further enhance the area. In an outpouring of generosity, hundreds of individuals and organizations have donated to the project.

The total cost to restore, rebuild and create the statue, base, foundation, and surrounding Veterans Concourse totaled approximately \$60,000.

The William Chandler Peterson American Legion Post #171 was especially generous with their support of the Union Soldier Statue Restoration Project. The Society is grateful to this group of veterans, not only for their service to our country, but for their generosity to this project. A lasting tribute to those who sacrificed for the freedoms we enjoy today.



Success!

After six years of fundraising and restoration work, the statue was returned to its place of honor in June 8, 2012.