

# MONUMENTS

## TOMBSTONES AND MARKERS

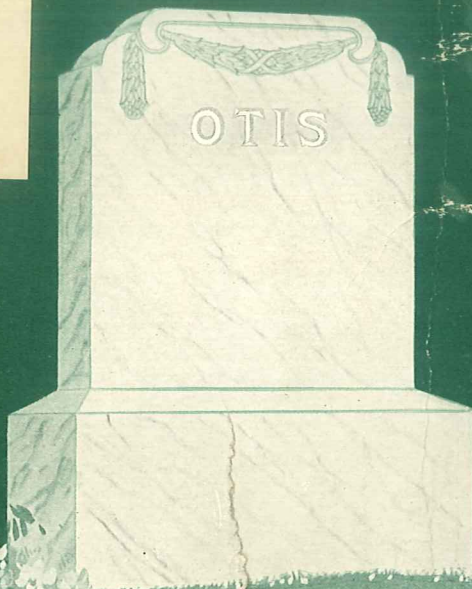
### ABOUT TRANSPORTATION CHARGES ON THIS MERCHANDISE

WE do not prepay transportation charges on Monuments listed in this Catalogue. Because there are a limited number of quarries from which acceptable stones can be shipped and because of the weight, we are not able to absorb the transportation costs.

*Montgomery Ward & Co.*  
Established 1892

World-Wide Distributors of Quality Merchandise  
Operating Nine Great Mail Order Houses  
and Hundreds of Retail Stores

15646



**Now! Easy  
Monthly  
Payments  
on Monuments**

# Montgomery Ward & Co.

Chicago  
Portland

Kansas City  
Oakland

St. Paul  
Fort Worth

Denver

Baltimore  
Albany

# Ward's Most Beautiful Monuments Can Now Be Bought on the Easy Payment Plan

YOU need not leave the grave of your loved one unmarked just because you haven't the money to pay the full price of a memorial stone. Even though the last illness and funeral expenses may have left you in straitened finances for the time being, there is no need to wait for months or to deny yourself the comfort of knowing that the last resting place is suitably marked with a beautiful and enduring monument or marker. A small down payment will bring you any stone

listed in this catalogue (priced at \$25.00 or over); and you can pay the balance in payments suited to your means.

Ward's Easy Payment Plan is designed to help you to buy a finer and more expensive stone, of greater dignity and beauty, than you could otherwise. Combined with Ward's prices, it places the very finest monuments within your reach, and without waiting. For easy payments use enclosed order blank.

## Our Complete Monument Guarantee

We Guarantee the monuments listed in this catalogue to be equal, both in materials and workmanship, to any similar memorials you can buy, regardless of price.

We Guarantee any monument you buy from us to be exactly as pictured and described, and to be as permanent and attractive as any similar memorial you can buy.

We Guarantee the inscription on your monument to be the exact wording you order and the style of lettering you select.

We Guarantee a saving on every monument and marker you buy from us.

We Guarantee safe delivery—in perfect condition.

If any stone is damaged in shipment, or is not as ordered, or fails in any way to be as above guaranteed, we will replace the stone or refund your money, whichever you prefer.

### Saved One-Half

"I wish to say the Monument as ordered; and to say I am pleased with it does not half ex-thing around it, and I am certain that I saved one-half, counting the freight."

MRS. CARRIE E. SHAPPELL,  
Piedmont, Okla.

### Fine Workmanship

"We thank you for your accurate work and speedy delivery of the Monument. Our friends admire the beautiful oakleaf design and the fine workmanship of the lettering, and they think it is a fine value for such a very reasonable price."

EARL A. BERGLUND,  
Worcester, Mass.

### Delivered Promptly

"The Monument was shipped from Rutland, Vermont, June 14, and was delivered June 18 at Shoemakersville. It was so well packed that there was not a scratch or mar on it. It was far above expectations as to quality, workmanship and price."

L. M. HOFFMAN,  
Shoemakersville, Pa.

### Excellent Quality

"I received my Monument and thank you for the wonderful work you have done. I wish to commend you upon the exactness and fairness of your work and the attention you give your customers."

H. R. VDA DE MORALES,  
Jerome, Ariz.

### Proud of It

"The Stone is perfect and the inscription artistically carved out to a letter. We are more than proud of it, as it is even better than we expected from the picture and description in your catalogue. We found nothing to compare with your stone in price."

MRS. EDITH HARDIN,  
Ponchatoula, La.

### Read These Letters

They Are Printed  
With the Permission  
of the Writers

### Saved One-Half

"There are Monuments in the cemetery which are about the same in shape, size and weight, but they are not finished as nice and they cost more than twice as much as I paid. I am sure I saved at least one-half by ordering from you."

FRANK GLASS,  
Stamping Ground, Ky.

## Only a Monument of Flawless Stone, Perfect in Design, Is Worthy of Its Sacred Mission

SOMEHOW, the placing of a Monument for those we hold dear brings us healing comfort. Perhaps because we love them, and their going has left loneliness in our hearts, we cannot bear the thought that this grave shall ever be forgotten.

And so enduring stone—an expression of our love—becomes the sentinel which guards their memory through the years—a record which neither time nor forgetting can efface. Surely we can pay them no more loving tribute than this—to choose a monument which, in each detail of workmanship and material, shall be worthy of such a mission.

### A Good Stone Lasts Forever

Only a perfect stone, absolutely free from blemish or weak vein, can resist the constant waste of weather. To insure perfect monuments we safeguard you in four ways—we have them cut from the best stone available; we select each piece with utmost care as to color, quality and flawlessness; we inspect rigidly each finished monument and, before shipping, we again test the stone for the slightest sign of imperfection. In addition, you are protected by our Complete Guarantee.

### The Story of Granite and Marble

Our Gray Granite comes from the granite region of Barre (pronounced Barry), Vermont—for fifty years the source of the gray granite from which the most beautiful and costly monuments are made. There are no flaws or imperfections in Barre Granite. Millions of years in the mysterious laboratories of the earth have created a stone so hard and uniformly flawless that it has set the standard.

Our Majestic Red Granite is just as uniform, as dependable and enduring as the gray granite. It has a deep rich red color which becomes a light pinkish hue when hammered and when polished it becomes a deep glowing red. Lettering or designs are unusually prominent and effective on red granite.

Marble is a much softer and less enduring stone than granite. However, it can be worked much more easily and with less expense, and will always be a favorite material for tombstones—especially for children, because it can be sculptured to such delicate, graceful designs. The stone and lettering will last for generations.

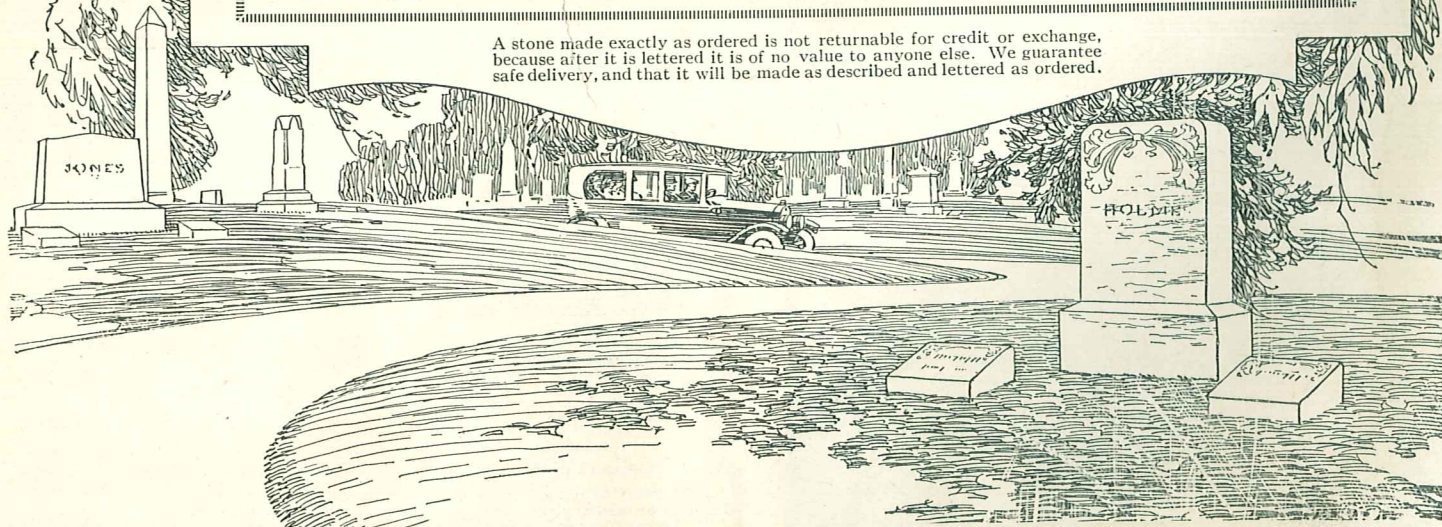
### Transportation Charges on Monuments

We do not pay transportation charges on Monuments listed in this Catalogue. Because there are only a limited number of quarries from which acceptable stones can be shipped and because of the weight, we are not able to absorb the transportation costs.

When you compare our prices with others, you will be surprised at the big savings you can make. Our customers often save one-third, besides obtaining better stones and better workmanship. You pay no intermediate profits, you secure the benefit of our large quantity discounts, and you pay no more for freight, for the freight from the quarry is always paid by you no matter where you buy. Add freight charges shown on Page 27 to prices listed; and if you have priced other stones you will see at once how much you will save at Ward's.

All orders for Marble Monuments and Markers are shipped from the quarries at Rutland, Vermont. Orders for Granite Memorials placed with our stores in Chicago, Kansas City, Denver, Saint Paul or Fort Worth are shipped from Elmwood, Illinois; those placed with our stores in Portland, Ore., and Oakland, Calif., are shipped from Portland, Ore.; those placed with our Baltimore store are shipped from Rutland, Vermont. The prices listed in this catalogue do not include freight charges. The monuments are finished in the workshop and shipped direct to you, thus saving additional transportation cost and profits of middlemen.

A stone made exactly as ordered is not returnable for credit or exchange, because after it is lettered it is of no value to anyone else. We guarantee safe delivery, and that it will be made as described and lettered as ordered.





**The New "Trinity"—Vermont Marble**

A simple, stately monument in the popular dull tooled finish. For styles and prices of lettering see Page 23. Lettering shown above is 3-inch Gothic, V-sunk.

**Total Height 2 feet 10 inches**  
**Main Block:** 1 foot 10 inches wide, 6 inches thick, 2 feet 4 inches high. **Base:** 2 feet 4 inches wide, 10 inches thick, 6 inches high. Shipping weight about 580 pounds.

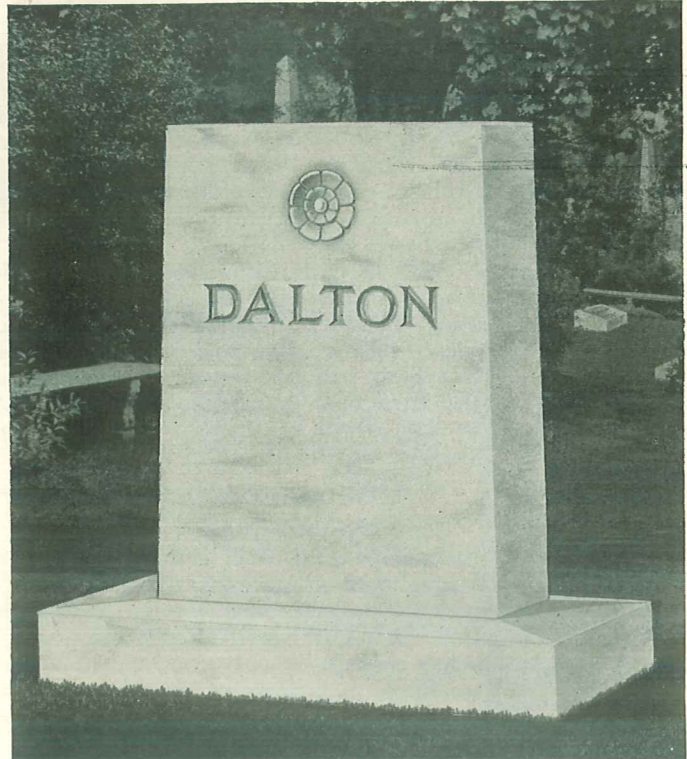
Article Number	Marble	Cash Price	Easy Payment Price	Down Payment	Per Month
253 K 8739	Blue Veined	\$78.50	\$86.50	\$12.00	\$8.00
253 K 8740	White Clouded	81.00	89.00	12.00	8.00

**Total Height 3 feet 2 inches**  
**Main Block:** 2 feet wide, 6 inches thick, 2 feet 8 inches high. **Base:** 2 feet 6 inches wide, 10 inches thick, 6 inches high. Shipping weight about 655 pounds.

Article Number	Marble	Cash Price	Easy Payment Price	Down Payment	Per Month
253 K 8741	Blue Veined	\$89.00	\$98.00	\$12.00	\$8.00
253 K 8742	White Clouded	92.50	102.00	15.00	8.00

**Total Height 3 feet 6 inches**  
**Main Block:** 2 feet 2 inches wide, 8 inches thick, 3 feet high. **Base:** 2 feet 10 inches wide, 1 foot 2 inches thick, 6 inches high. Shipping weight about 1100 pounds.

Article Number	Marble	Cash Price	Easy Payment Price	Down Payment	Per Month
253 K 8743	Blue Veined	\$119.00	\$130.00	\$15.00	\$10.00
253 K 8744	White Clouded	125.00	137.50	15.00	12.00



**The New "Homeland"—Vermont Marble**

A monument of beautiful simplicity of design; a plain slab of polished Vermont marble standing in quiet dignity upon its marble base. A single flower carved in the stone adorns the polished front, in addition to the lettering which may be had in any of the styles shown on Page 23. Lettering illustrated above is 3-inch Roman, V-sunk. All lettering is extra.

Quarried from fine Vermont marble, blue veined or white clouded. Either makes a beautiful and appropriate memorial stone.

**Total Height 2 feet 8 inches**  
**Main Block:** 1 foot 10 inches wide, 6 inches thick, 2 feet 2 inches high. **Base:** 2 feet 8 inches wide, 1 foot 2 inches thick, 6 inches high. Shipping weight about 630 pounds.

Article Number	Marble	Cash Price	Easy Payment Price	Down Payment	Per Month
253 K 8745	Blue Veined	\$80.50	\$88.00	\$12.00	\$8.00
253 K 8746	White Clouded	84.00	92.50	12.00	8.00

**Total Height 3 feet 2 inches**  
**Main Block:** 2 feet 2 inches wide, 8 inches thick, 2 feet 8 inches high. **Base:** 3 feet 2 inches wide, 1 foot 6 inches thick, 6 inches high. Shipping weight about 1105 pounds.

Article Number	Marble	Cash Price	Easy Payment Price	Down Payment	Per Month
253 K 8747	Blue Veined	\$114.00	\$125.00	\$15.00	\$10.00
253 K 8748	White Clouded	119.00	130.00	15.00	10.00

**Total Height 3 feet 6 inches**  
**Main Block:** 2 feet 6 inches wide, 8 inches thick, 3 feet high. **Base:** 3 feet 8 inches wide, 1 foot 8 inches thick, 6 inches high. Shipping weight about 1430 pounds.

Article Number	Marble	Cash Price	Easy Payment Price	Down Payment	Per Month
253 K 8749	Blue Veined	\$135.00	\$149.00	\$16.00	\$12.00
253 K 8750	White Clouded	142.00	157.00	18.00	12.00

**The "Rosehill"—Vermont Marble**

Either for a Family Monument or an Individual Marker, the Rosehill (shown at left) is enduring testimony of the loving care which prompted its selection. Whether you choose it in blue veined or white clouded stone, it is made from Vermont marble.

Cash Price  
**\$62.00**

The tall main block is finely polished on all surfaces. It bears a simple but perfectly executed traced design of lilies—the symbol of purity. This design is included in cost, but lettering is extra. Lettering is 4-inch Roman, V-sunk; the appropriate size and style for the largest size monument. Other styles and prices shown on Page 23.

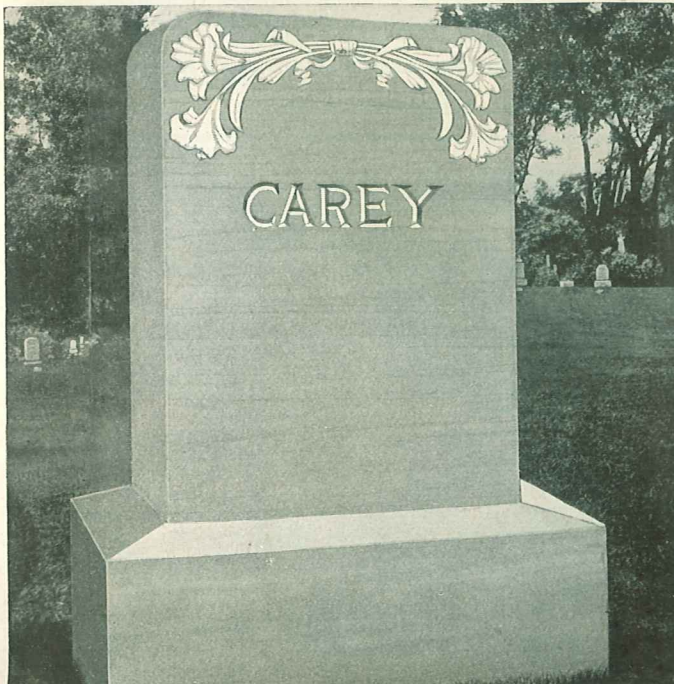
**Total Height 3 feet 8 inches**  
**Main Block:** 2 feet wide, 6 inches thick, 2 feet 10 inches high. **Base:** 2 feet 6 inches wide, 1 foot thick, 10 inches high. Shipping weight about 930 pounds.

Article Number	Marble	Cash Price	Easy Payment Price	Down Payment	Per Month
253 K 8606	Blue Veined	\$62.00	\$68.50	\$10.00	\$5.00
253 K 8607	White Clouded	68.00	75.00	12.00	7.00

**Total Height 4 feet**  
**Main Block:** 2 feet 2 inches wide, 8 inches thick, 3 feet high. **Base:** 2 feet 10 inches wide, 1 foot 4 inches thick, 1 foot high. Shipping weight about 1430 pounds.

Article Number	Marble	Cash Price	Easy Payment Price	Down Payment	Per Month
253 K 8608	Blue Veined	\$84.50	\$93.00	\$12.00	\$8.00
253 K 8609	White Clouded	88.50	97.50	12.00	8.00

Military or fraternal emblems, or verse inscriptions, can be engraved on these stones at little cost. For prices see Pages 22 and 24. It requires from three to six weeks to prepare Marble Stones for shipment.





**The "Vermont"—Vermont Marble**

**Cash Price \$77<sup>50</sup>** Simple but attractive. This Monument, carved from flawless stone, is in either clouded white or exquisite blue veined marble. Both the main block and the base are finished in the popular tool finish. All lettering is extra. Lettering shown is Gothic, V-sunk style. For other styles of lettering and prices see Page 23.

**Total Height 2 feet 10 inches**  
**Main Block:** 1 foot 10 inches wide, 6 inches thick, 2 feet 4 inches high. **Base:** 2 feet 4 inches wide, 10 inches thick, 6 inches high. Shipping weight about 580 pounds.

Article Number	Marble	Cash Price	Easy Payment Price	Down Payment	Per Month
253 K 8751	Blue Veined	\$77.50	\$85.00	\$12.00	\$8.00
253 K 8752	White Clouded	79.50	87.50	12.00	8.00

**Total Height 3 feet 2 inches**  
**Main Block:** 2 feet wide, 6 inches thick, 2 feet 8 inches high. **Base:** 2 feet 6 inches wide, 10 inches thick, 6 inches high. Shipping weight about 655 pounds.

Article Number	Marble	Cash Price	Easy Payment Price	Down Payment	Per Month
253 K 8753	Blue Veined	\$83.00	\$91.50	\$12.00	\$8.00
253 K 8754	White Clouded	85.00	93.50	12.00	8.00

**Total Height 3 feet 6 inches**  
**Main Block:** 2 feet 2 inches wide, 8 inches thick, 3 feet high. **Base:** 2 feet 10 inches wide, 1 foot 2 inches thick, 6 inches high. Shipping weight about 1105 pounds.

Article Number	Marble	Cash Price	Easy Payment Price	Down Payment	Per Month
253 K 8755	Blue Veined	\$114.00	\$125.00	\$15.00	\$10.00
253 K 8756	White Clouded	119.00	130.00	15.00	10.00

**The "Lindenwood"—Vermont Marble**

**Cash Price \$42<sup>50</sup>** A beautiful and carefully chosen Monument such as the Lindenwood is a splendid public tribute. It is not only beautiful in design, but it is made of the highest quality marble, either blue veined or white clouded.

The gracefully shaped main block is finely polished on front only. The front face is deeply engraved with a simple design, which in blue marble especially stands out very effectively and emphasizes the pleasing outlines of the stone. Sides and gently sloping top of main block have a smooth sanded finish. The entire base is also sand finished.

The engraved design is included in the cost, but all lettering is extra. Lettering is: Family name, 4-inch Gothic, raised in a panel; name and dates, 2 1/2-inch Gothic, V-sunk. This is a very suitable style and size for the largest size stone. Other styles and prices are shown on Page 23.

**Total Height 3 feet 2 inches**  
**Main Block:** 1 foot 8 inches wide, 6 inches thick, 2 feet 4 inches high. **Base:** 2 feet 2 inches wide, 1 foot thick, 10 inches high. Shipping weight about 700 pounds.  
 253 K 8616—Blue Veined. Cash Price...\$42.50  
 Easy Payment Price: Only \$5.00 with order and \$5.00 a month...\$47.00  
 253 K 8617—White Clouded. Cash Price...\$44.00  
 Easy Payment Price: Only \$5.00 with order and \$5.00 a month...\$48.50

**Total Height 3 feet 6 inches**  
**Main Block:** 2 feet wide, 8 inches thick, 2 feet 6 inches high. **Base:** 2 feet 6 inches wide, 1 foot 2 inches thick, 1 foot high. Shipping weight about 1130 pounds.  
 253 K 8618—Blue Veined. Cash Price...\$62.00  
 Easy Payment Price: Only \$10.00 with order and \$5.00 a month...\$68.50  
 253 K 8619—White Clouded. Cash Price...\$68.50  
 Easy Payment Price: Only \$10.00 with order and \$5.00 a month...\$75.50

**Total Height 3 feet 6 inches**  
**Main Block:** 2 feet wide, 10 inches thick, 2 feet 6 inches high. **Base:** 2 feet 6 inches wide, 1 foot 4 inches thick, 1 foot high. Shipping weight about 1380 pounds.  
 253 K 8620—Blue Veined. Cash Price...\$75.00  
 Easy Payment Price: Only \$12.00 with order and \$8.00 a month...\$82.50  
 253 K 8621—White Clouded. Cash Price...\$78.50  
 Easy Payment Price: Only \$12.00 with order and \$8.00 a month...\$86.50

**Total Height 3 feet 6 inches**  
**Main Block:** 2 feet wide, 1 foot thick, 2 feet 6 inches high. **Base:** 2 feet 6 inches wide, 1 foot 6 inches thick, 1 foot high. Shipping weight about 1600 pounds.  
 253 K 8622—Blue Veined. Cash Price...\$86.50  
 Easy Payment Price: Only \$12.00 with order and \$8.00 a month...\$95.00  
 253 K 8623—White Clouded. Cash Price...\$91.00  
 Easy Payment Price: Only \$12.00 with order and \$8.00 a month...\$100.00



**The "Cross"—Vermont Marble**

The cross is a symbol of faith and hope. The front of the cross and block is highly polished; the base, sides and back is sand finished. Lettering is extra. Gothic, V-sunk style of lettering shown. For other styles and prices see Page 23.

**Total Height 3 feet 6 inches**  
**Cross:** 1 foot 6 inches wide, 6 inches thick, 3 feet high. **Base:** 1 foot 10 inches wide, 10 inches thick, 6 inches high. Shipping weight about 505 pounds.

Article Number	Marble	Cash Price	Easy Payment Price	Down Payment	Per Month
253 K 8757	Blue Veined	\$59.00	\$65.00	\$10.00	\$5.00
253 K 8758	White Clouded	62.50	69.00	10.00	5.00

**Total Height 3 feet 6 inches**  
**Cross:** 1 foot 8 inches wide, 6 inches thick, 3 feet high. **Base:** 3 feet 2 inches wide, 1 foot thick, 6 inches high. Shipping weight about 580 pounds.

Article Number	Marble	Cash Price	Easy Payment Price	Down Payment	Per Month
253 K 8759	Blue Veined	\$64.50	\$71.00	\$10.00	\$5.00
253 K 8760	White Clouded	66.00	73.00	10.00	5.00

**Total Height 4 feet 8 inches**  
**Cross:** 1 foot 8 inches wide, 6 inches thick, 4 feet high. **Base:** 2 feet 2 inches wide, 1 foot thick, 8 inches high. Shipping weight about 780 pounds.

Article Number	Marble	Cash Price	Easy Payment Price	Down Payment	Per Month
253 K 8761	Blue Veined	\$78.50	\$86.50	\$12.00	\$8.00
253 K 8762	White Clouded	82.00	90.00	12.00	8.00





**The "Bethany"—Vermont Marble**

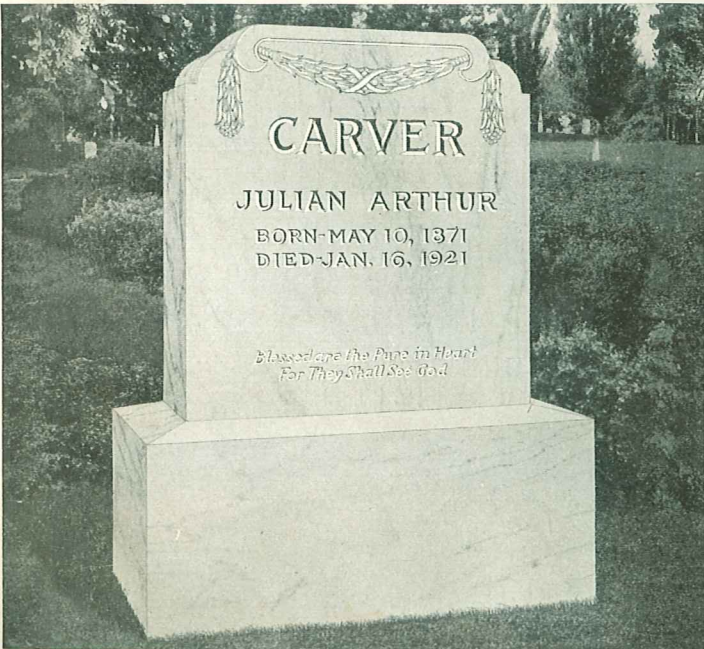
Cash Price **\$47<sup>00</sup>** Furnished in blue veined or white clouded marble, all with sides of main block and upper base polished. Sloping top of main block and bevel of upper base are finished dull. Entire lower base is dull. Design of Russian cross and oak leaves in relief against traced ground. Lettering is extra; prices on Page 23.

**Total Height 3 feet 10 inches**  
**Main Block:** 1 foot wide, 6 inches thick, 2 feet 6 inches high. **Upper Base:** 1 foot 4 inches wide, 10 inches thick, 6 inches high. **Lower Base:** 1 foot 8 inches wide, 1 foot 2 inches thick, 10 inches high. Shipping weight about 630 pounds.

Article Number	Marble	Cash Price	Easy Payment Price	Down Payment	Per Month
253 K 8624	Blue Veined	\$47.00	\$52.00	\$5.00	\$5.00
253 K 8625	White Clouded	49.00	54.00	5.00	5.00

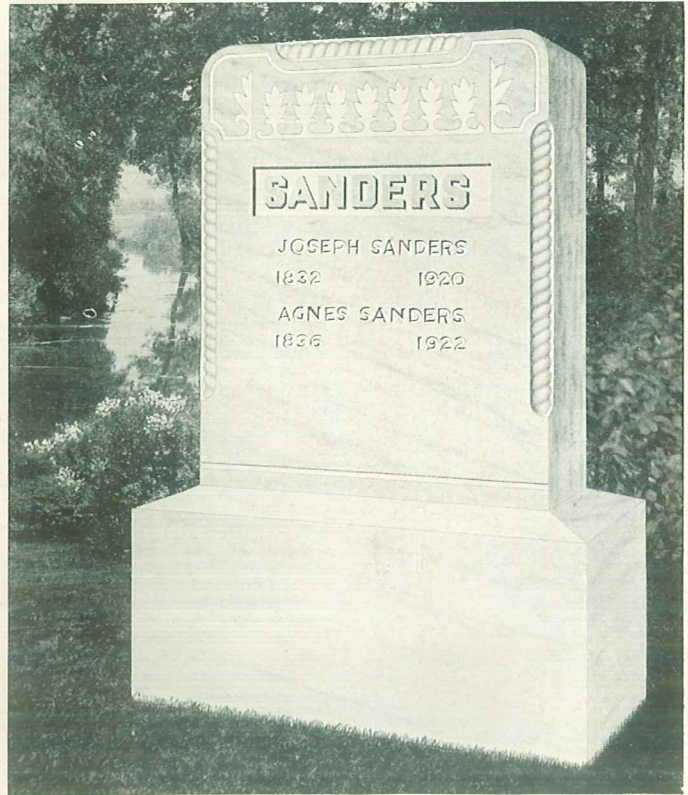
**Total Height 4 feet 8 inches**  
**Main Block:** 1 foot 4 inches wide, 8 inches thick, 3 feet high. **Upper Base:** 1 foot 8 inches wide, 1 foot thick, 8 inches high. **Lower Base:** 2 feet 2 inches wide, 1 foot 6 inches thick, 1 foot high. Shipping weight about 1230 pounds.

Article Number	Marble	Cash Price	Easy Payment Price	Down Payment	Per Month
253 K 8626	Blue Veined	\$76.50	\$84.50	\$12.00	\$8.00
253 K 8627	White Clouded	79.50	87.50	12.00	8.00



**The "Graceland"—Vermont Marble**

Monuments Listed Above Shipped from Rutland, Vermont



**The "Norwood"—Vermont Marble**

Cash Price **\$35<sup>50</sup>** In its larger size the Norwood may be used as a family stone; in its smaller sizes, as an individual marker. Made of white clouded or blue veined Vermont marble. Main block highly polished and decorated with oak leaf design. Rope molding at top and corners is tool finished. Entire base dull tooled finish. Lettering on largest stone: Family name, 4-inch Gothic raised in panel; names in 2-inch Gothic, V-sunk. Lettering is extra; prices on Page 23.

**Total Height 2 feet 10 inches**  
**Main Block:** 1 foot 6 inches wide, 6 inches thick, 2 feet high. **Base:** 2 feet wide, 1 foot thick, 10 inches high. Shipping weight about 600 pounds.

Article Number	Marble	Cash Price	Easy Payment Price	Down Payment	Per Month
253 K 8628	Blue Veined	\$35.50	\$39.50	\$5.00	\$5.00
253 K 8629	White Clouded	38.00	42.00	5.00	5.00

**Total Height 3 feet 2 inches**  
**Main Block:** 1 foot 10 inches wide, 8 inches thick, 2 feet 2 inches high. **Base:** 2 feet 4 inches wide, 1 foot 2 inches thick, 1 foot high. Shipping weight about 1000 pounds.

Article Number	Marble	Cash Price	Easy Payment Price	Down Payment	Per Month
253 K 8630	Blue Veined	\$54.50	\$60.00	\$5.00	\$5.00
253 K 8631	White Clouded	59.00	65.00	5.00	5.00

**Total Height 3 feet 6 inches**  
**Main Block:** 2 feet 2 inches wide, 10 inches thick, 2 feet 6 inches high. **Base:** 2 feet 8 inches wide, 1 foot 4 inches thick, 1 foot high. Shipping weight about 1480 pounds.

Article Number	Marble	Cash Price	Easy Payment Price	Down Payment	Per Month
253 K 8632	Blue Veined	\$81.50	\$89.50	\$12.00	\$8.00
253 K 8633	White Clouded	85.50	94.00	12.00	8.00

**The "Graceland"—Vermont Marble**

Cash Price **\$46<sup>00</sup>** This small Monument is cut from blue veined or white clouded marble. Main block is polished on all four sides; top dull tooled finished. Base is finished dull. Delicately traced draped garland on front of stone only. Lettering shown is: Family name 4-inch Roman, V-sunk; given name 2 1/2-inch; dates 1 1/2-inch. Lettering is extra; for other styles and prices see Page 23.

**Total Height 3 feet**  
**Main Block:** 1 foot 8 inches wide, 6 inches thick, 2 feet 2 inches high. **Base:** 2 feet 2 inches wide, 1 foot thick, 10 inches high. Shipping weight about 650 pounds.

Article Number	Marble	Cash Price	Easy Payment Price	Down Payment	Per Month
253 K 8634	Blue Veined	\$46.00	\$51.00	\$5.00	\$5.00
253 K 8635	White Clouded	49.50	54.50	5.00	5.00

**Total Height 3 feet 2 inches**  
**Main Block:** 2 feet wide, 8 inches thick, 2 feet 2 inches high. **Base:** 2 feet 6 inches wide, 1 foot 2 inches thick, 1 foot high. Shipping weight about 1025 pounds.

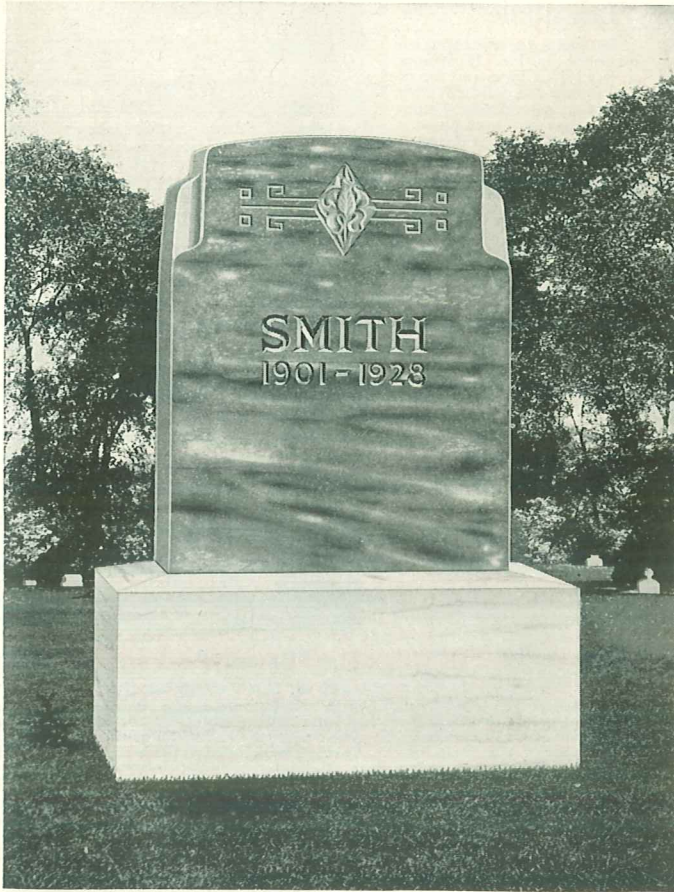
Article Number	Marble	Cash Price	Easy Payment Price	Down Payment	Per Month
253 K 8636	Blue Veined	\$62.50	\$69.00	\$10.00	\$5.00
253 K 8637	White Clouded	65.50	72.50	10.00	5.00

**Total Height 3 feet 6 inches**  
**Main Block:** 2 feet 4 inches wide, 10 inches thick, 2 feet 6 inches high. **Base:** 2 feet 10 inches wide, 1 foot 4 inches thick, 1 foot high. Shipping weight about 1500 pounds.

Article Number	Marble	Cash Price	Easy Payment Price	Down Payment	Per Month
253 K 8638	Blue Veined	\$87.50	\$96.50	\$12.00	\$8.00
253 K 8639	White Clouded	92.50	102.00	12.00	10.00

**Total Height 3 feet 10 inches**  
**Main Block:** 2 feet 6 inches wide, 1 foot thick, 2 feet 8 inches high. **Base:** 3 feet wide, 1 foot 6 inches thick, 1 foot 2 inches high. Shipping weight about 2000 pounds.

Article Number	Marble	Cash Price	Easy Payment Price	Down Payment	Per Month
253 K 8640	Blue Veined	\$112.50	\$124.00	\$20.00	\$10.00
253 K 8641	White Clouded	119.00	131.00	25.00	10.00



**The "Farland"—Vermont Marble**

**Cash Price \$46<sup>00</sup>** A lovely Memorial! The simple, incised line decoration at the top is lighted by a beautiful flower. We offer this monument in either white clouded or blue veined Vermont marble. The face of the main block is highly polished, while the sides and back of the main block and entire base are sand finish. Lettering is of Roman V-sunk design. All lettering is extra. For other styles and prices see Page 23.

**Total Height 2 feet 10 inches**  
**Main Block:** 1 foot 6 inches wide, 4 inches thick, 2 feet high. **Base:** 2 feet wide, 10 inches thick, 10 inches high. Shipping weight about 455 pounds.

Article Number	Marble	Cash Price	Easy Payment Price	Down Payment	Per Month
253 K 8763	Blue Veined	\$46.00	\$51.00	\$5.00	\$5.00
253 K 8764	White Clouded	48.00	53.00	5.00	5.00

**Total Height 2 feet 10 inches**  
**Main Block:** 1 foot 6 inches wide, 6 inches thick, 2 feet high. **Base:** 2 feet wide, 1 foot thick, 10 inches high. Shipping weight about 580 pounds.

Article Number	Marble	Cash Price	Easy Payment Price	Down Payment	Per Month
253 K 8765	Blue Veined	\$54.50	\$60.00	\$10.00	\$5.00
253 K 8766	White Clouded	56.50	62.50	10.00	5.00

**Total Height 3 feet 4 inches**  
**Main Block:** 1 foot 8 inches wide, 6 inches thick, 2 feet 6 inches high. **Base:** 2 feet 2 inches wide, 1 foot thick, 10 inches high. Shipping weight about 705 pounds.

Article Number	Marble	Cash Price	Easy Payment Price	Down Payment	Per Month
253 K 8767	Blue Veined	\$66.00	\$72.50	\$10.00	\$5.00
253 K 8768	White Clouded	68.00	75.00	10.00	5.00

**The "Rockland"—Vermont Marble**

**Cash Price \$79<sup>00</sup>** Few designs so fully express simplicity, strength and faith as does the Rockland. It is quarried from the finest stone, either blue veined or clouded white marble—and in either the delicately embossed design comes out as an effective frame for the lettering. All four sides and top of main block are highly polished. Entire base is finished dull. Lettering shown is 3 1/2-inch Gothic, V-sunk—a most appropriate size and style, especially for a short name. Lettering is extra; for other styles and prices see Page 23.

**Total Height 3 feet 2 inches**  
**Main Block:** 2 feet 2 inches wide, 8 inches thick, 2 feet 2 inches high. **Base:** 2 feet 8 inches wide, 1 foot 2 inches thick, 1 foot high. Shipping weight about 1100 pounds.

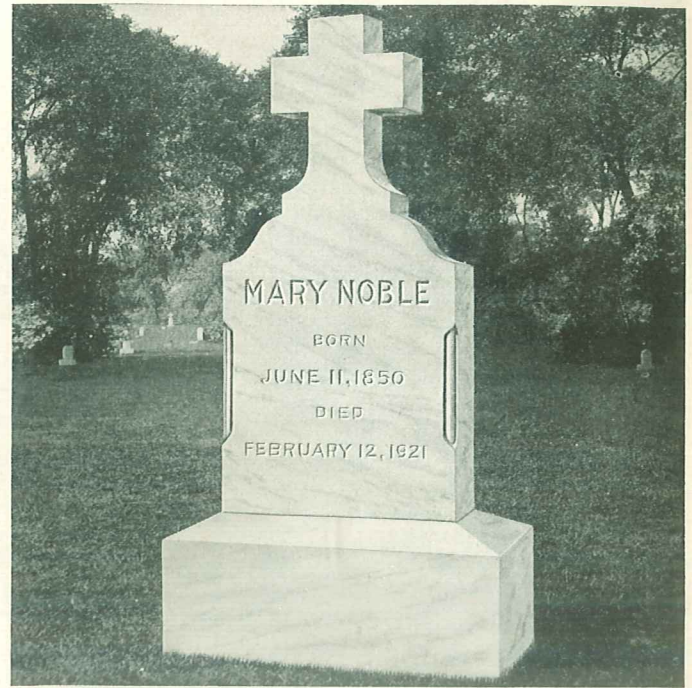
Article Number	Marble	Cash Price	Easy Payment Price	Down Payment	Per Month
253 K 8650	Blue Veined	\$79.00	\$87.00	\$12.00	\$7.00
253 K 8651	White Clouded	84.00	92.50	12.00	8.00

**Total Height 3 feet 4 inches**  
**Main Block:** 2 feet 4 inches wide, 10 inches thick, 2 feet 4 inches high. **Base:** 2 feet 10 inches wide, 1 foot 4 inches thick, 1 foot high. Shipping weight about 1450 pounds.

Article Number	Marble	Cash Price	Easy Payment Price	Down Payment	Per Month
253 K 8652	Blue Veined	\$ 95.00	\$104.50	\$15.00	\$10.00
253 K 8653	White Clouded	103.00	113.50	15.00	10.00

**Total Height 3 feet 6 inches**  
**Main Block:** 2 feet 6 inches wide, 1 foot thick, 2 feet 6 inches high. **Base:** 3 feet wide, 1 foot 6 inches thick, 1 foot high. Shipping weight about 2030 pounds.

Article Number	Marble	Cash Price	Easy Payment Price	Down Payment	Per Month
253 K 8654	Blue Veined	\$119.00	\$131.00	\$15.00	\$10.00
253 K 8655	White Clouded	122.50	135.00	15.00	10.00



**The "Lincoln"—Vermont Marble**

You can choose no emblem more beautiful and fitting than the cross. This simple Marker, carved from flawless stone, is in either clouded white or exquisitely veined blue marble. Front of tablet is finely polished, bringing out the lettering nicely, while back and beveled edges have smooth dull finish. Base has sanded finish. Lettering shown is 3-inch Gothic, V-sunk. While this is a most appropriate size and style for this stone, you may prefer another of the styles shown and priced on Page 23.

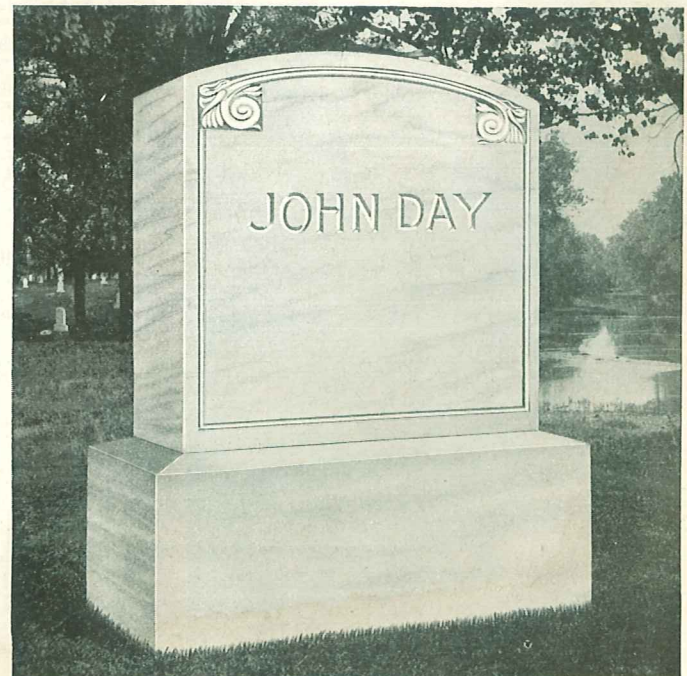
**Cash Price \$32<sup>50</sup>**

**Total Height 3 feet 8 inches**  
**Main Block:** 1 foot 4 inches wide, 3 inches thick, 2 feet 10 inches high. **Base:** 1 foot 10 inches wide, 9 inches thick, 10 inches high. Shipping weight about 380 pounds.

Article Number	Marble	Cash Price	Easy Payment Price	Down Payment	Per Month
253 K 8660	Blue Veined	\$32.50	\$36.00	\$5.00	\$5.00
253 K 8661	White Clouded	34.00	37.50	5.00	5.00

**Total Height 3 feet 10 inches**  
**Main Block:** 1 foot 6 inches wide, 4 inches thick, 3 feet high. **Base:** 2 feet wide, 10 inches thick, 10 inches high. Shipping weight about 480 pounds.

Article Number	Marble	Cash Price	Easy Payment Price	Down Payment	Per Month
253 K 8662	Blue Veined	\$39.00	\$43.00	\$5.00	\$5.00
253 K 8663	White Clouded	41.50	46.00	5.00	5.00





The "Oakridge"—Vermont Marble

A graceful Double Monument. The four sides of the main block are finely polished. A simple design frames the words "Father" and "Mother," which are included in the price, but may be placed on either side of the front as you specify. Gracefully curved tops of main block and entire base have sand finish. Blue veined or white clouded marble. Lettering on large stone is Gothic, V-sunk; names are 2-inch; dates, 1 1/2-inch. All lettering extra; prices on Page 23.

Total Height 2 feet 8 inches

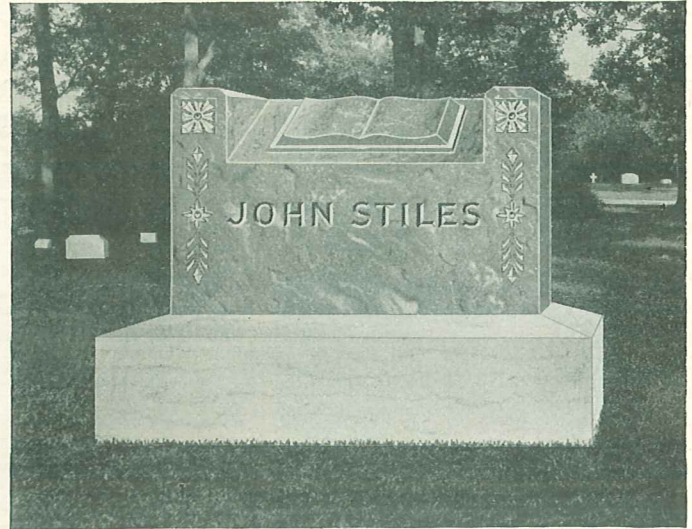
Main Block: 2 feet 8 inches wide, 4 inches thick, 1 foot 10 inches high. Base: 3 feet 2 inches wide, 10 inches thick, 10 inches high. Shipping weight about 650 pounds.

Article Number	Marble	Cash Price	Easy Payment Price	Down Payment	Per Month
253 K 8804	Blue Veined	\$42.50	\$47.00	\$5.00	\$5.00
253 K 8805	White Clouded	45.50	50.00	5.00	5.00

Total Height 2 feet 8 inches

Main Block: 2 feet 8 inches wide, 6 inches thick, 1 foot 10 inches high. Base: 3 feet 2 inches wide, 1 foot thick, 10 inches high. Shipping weight about 875 pounds.

Article Number	Marble	Cash Price	Easy Payment Price	Down Payment	Per Month
253 K 8806	Blue Veined	\$53.00	\$58.50	\$10.00	\$5.00
253 K 8807	White Clouded	57.00	62.50	10.00	5.00



The "Mount Greenwood"—Vermont Marble

A beautiful memorial. In the top of the low broad stone is an open-book design. The lettering is flanked on either side by a graceful decoration. Lettering shown is Gothic, V-sunk. For other styles and prices see Page 23; all lettering extra.

Total Height 1 foot 6 inches (thin style)

Main Block: 1 foot 8 inches wide, 8 inches thick, 1 foot high. Base: 2 feet wide, 1 foot thick, 6 inches high. Shipping weight about 355 pounds.

Article Number	Marble	Cash Price	Easy Payment Price	Down Payment	Per Month
253 K 8773	Blue Veined	\$35.00	\$39.00	\$5.00	\$5.00
253 K 8774	White Clouded	36.50	40.50	5.00	5.00

Total Height 1 foot 6 inches (thick style)

Main Block: 1 foot 8 inches wide, 10 inches thick, 1 foot high. Base: 2 feet 2 inches wide, 1 foot 4 inches thick, 6 inches high. Shipping weight about 480 pounds.

Article Number	Marble	Cash Price	Easy Payment Price	Down Payment	Per Month
253 K 8775	Blue Veined	\$41.00	\$45.00	\$5.00	\$5.00
253 K 8776	White Clouded	43.00	47.50	5.00	5.00

Total Height 1 foot 8 inches

Main Block: 2 feet wide, 1 foot thick, 1 foot 2 inches high. Base: 2 feet 6 inches wide, 1 foot 6 inches thick, 6 inches high. Shipping weight about 705 pounds.

Article Number	Marble	Cash Price	Easy Payment Price	Down Payment	Per Month
253 K 8777	Blue Veined	\$53.50	\$59.00	\$10.00	\$5.00
253 K 8778	White Clouded	56.00	62.00	10.00	5.00



The "Franklin"—Vermont Marble

This appropriate double Monument, in blue veined or white clouded marble, all highly polished except curved tops of main block and base which have smooth dull finish. Curved tops provide space for the words "Father" and "Mother," if desired. Ample room for names and dates which, as shown, are in 2 1/2-inch and 1-inch Gothic, V-sunk. Family name in panel as shown is 3 1/2-inch Gothic, raised. Lettering extra; styles and prices on Page 23.

Total Height 2 feet 10 inches

Main Block: 2 feet 8 inches wide, 4 inches thick, 2 feet high. Base: 3 feet wide, 10 inches thick, 10 inches high. Shipping weight about 700 pounds.

Article Number	Marble	Cash Price	Easy Payment Price	Down Payment	Per Month
253 K 8816	Blue Veined	\$50.00	\$55.00	\$ 5.00	\$5.00
253 K 8817	White Clouded	53.00	58.50	10.00	5.00

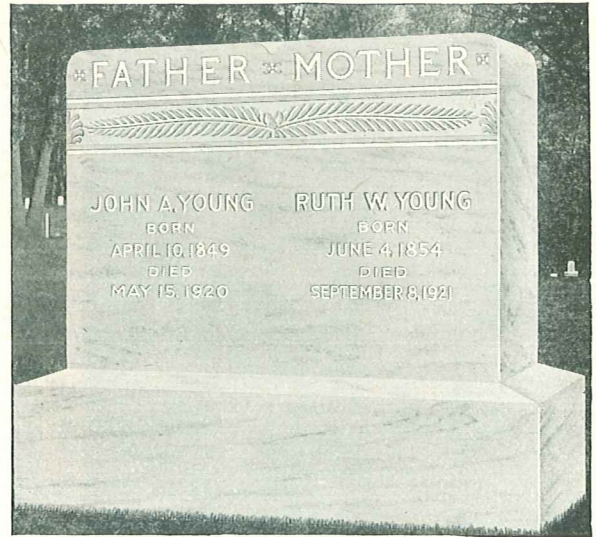
Total Height 3 feet 2 inches

Main Block: 2 feet 8 inches wide, 8 inches thick, 2 feet high. Base: 3 feet wide, 1 foot 2 inches thick, 1 foot 2 inches high. Shipping weight about 1250 pounds.

Article Number	Marble	Cash Price	Easy Payment Price	Down Payment	Per Month
253 K 8817	Blue Veined	\$70.00	\$77.00	\$12.00	\$8.00
253 K 8818	White Clouded	74.00	81.00	12.00	8.00

**Lowest Prices  
Big Savings!**

It requires from three to six weeks to finish a Marble Stone and prepare it for shipment. — Freight Rates to principal cities given on Page 27



The "Rosedale"—Vermont Marble

A simple, dignified Monument. Although a single stone the arched panels and tapered beveling give the effect of two separate stones. The words "Father" and "Mother" skillfully traced without charge. Position of these words reversed if desired. All other lettering is extra; styles and prices on Page 23. Entire main block highly polished. Sand finished base. Furnished in blue veined or white clouded marble. Lettering shown is 3-inch and 1 1/2-inch Gothic, V-sunk.

Total Height 2 feet 8 inches

Main Block: 2 feet 8 inches wide, 4 inches thick, 1 foot 10 inches high. Base: 3 feet 2 inches wide, 10 inches thick, 10 inches high. Shipping weight about 675 pounds.

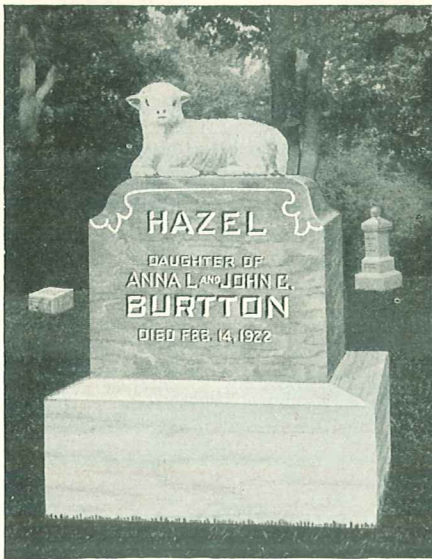
Article Number	Marble	Cash Price	Easy Payment Price	Down Payment	Per Month
253 K 8820	Blue Veined	\$39.00	\$43.00	\$5.00	\$5.00
253 K 8821	White Clouded	40.50	44.50	5.00	5.00

Total Height 2 feet 8 inches

Main Block: 2 feet 8 inches wide, 6 inches thick, 1 foot 10 inches high. Base: 3 feet 2 inches wide, 1 foot thick, 10 inches high. Shipping weight about 900 pounds.

Article Number	Marble	Cash Price	Easy Payment Price	Down Payment	Per Month
253 K 8822	Blue Veined	\$49.00	\$54.00	\$ 5.00	\$5.00
253 K 8823	White Clouded	53.50	58.50	10.00	5.00



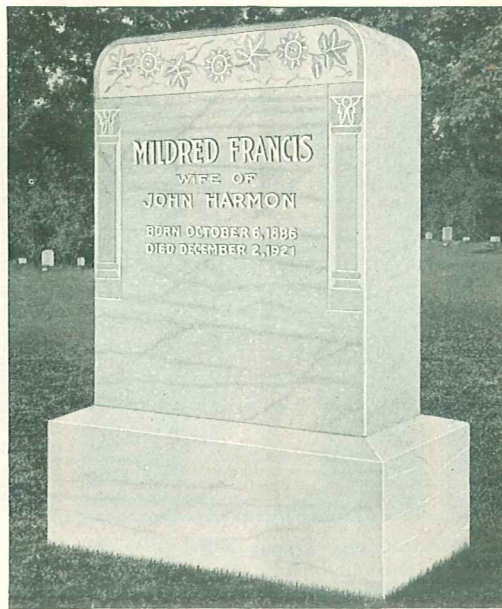


**The "Wildwood"—Vermont Marble**

A beautiful memorial for a little child. Furnished in blue veined or white clouded marble. Main block polished; carved lamb with tooled finish. Price unusually low. Dull, sand-finished base. Lettering 2 and 1-inch Gothic, V-sunk. Lettering is extra; prices on Page 23. Dowels and cement for setting included.

**Total Height 1 foot 10 inches**  
**Main Block:** 1 foot wide, 4 inches thick, 1 foot 2 inches high. **Base:** 1 foot 4 inches wide, 8 inches thick, 8 inches high. Shipping weight about 170 pounds.  
**253 K 8850—Blue Veined.** Cash Price..... \$28.75  
 Easy Payment Price: Only \$5.00 with order and \$5.00 a month..... \$32.00  
**253 K 8851—White Clouded.** Cash Price..... \$29.75  
 Easy Payment Price: Only \$5.00 with order and \$5.00 a month..... \$33.00

**Total Height 2 feet**  
**Main Block:** 1 foot 2 inches wide, 4 inches thick, 1 foot 4 inches high. **Base:** 1 foot 4 inches wide, 8 inches thick, 8 inches high. Shipping weight about 200 pounds.  
**253 K 8852—Blue Veined.** Cash Price..... \$32.00  
 Easy Payment Price: Only \$5.00 with order and \$5.00 a month..... \$35.50  
**253 K 8853—White Clouded.** Cash Price..... \$33.50  
 Easy Payment Price: Only \$5.00 with order and \$5.00 a month..... \$37.00

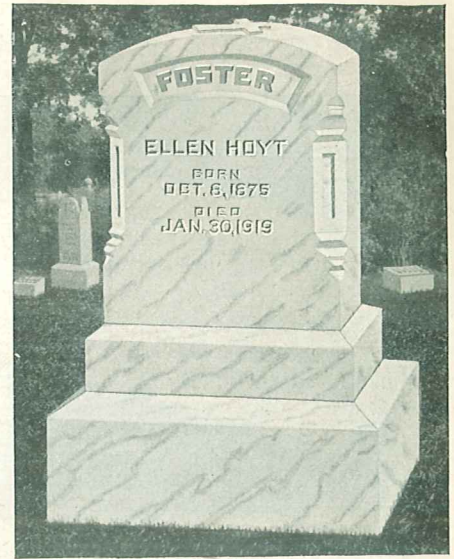


**The "Hazelwood"—Vermont Marble**

Top and four sides of main block highly polished. Front decorated with traced design of pillars supporting border of flowers. Entire base is dull sand finished. Furnished in blue veined and white clouded marble. Lettering shown is 2 1/2, 2 and 1 1/2-inch Roman, V-sunk. Lettering is extra; for prices see Page 23.

**Total Height 2 feet 6 inches**  
**Main Block:** 1 foot 6 inches wide, 6 inches thick, 1 foot 8 inches high. **Base:** 2 feet wide, 1 foot thick, 10 inches high. Shipping weight about 600 pounds.  
**253 K 8825—Blue Veined.** Cash Price..... \$26.50  
 Easy Payment Price: Only \$5.00 with order and \$5.00 a month. 29.50  
**253 K 8826—White Clouded.** Cash Price..... 29.50  
 Easy Payment Price: Only \$5.00 with order and \$5.00 a month. 32.50

**Total Height 3 feet 2 inches**  
**Main Block:** 2 feet wide, 8 inches thick, 2 feet 2 inches high. **Base:** 2 feet 6 inches wide, 1 foot 2 inches thick, 1 foot high. Shipping weight about 1100 pounds.  
**253 K 8827—Blue Veined.** Cash Price..... \$57.50  
 Easy Payment Price: Only \$7.00 with order and \$5.00 a month. 63.50  
**253 K 8828—White Clouded.** Cash Price..... 59.50  
 Easy Payment Price: Only \$7.00 with order and \$5.00 a month. 65.50

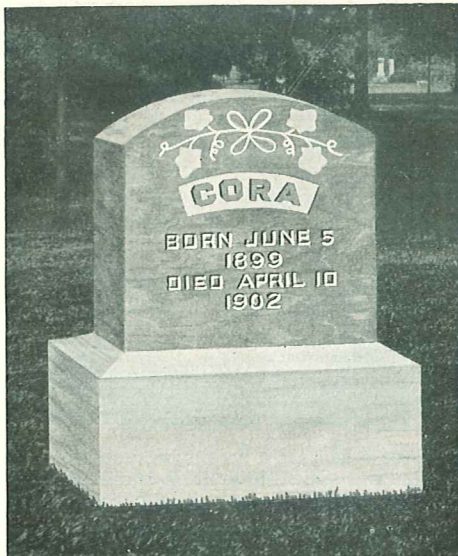


**The "Oakland"—Vermont Marble**

All sides polished except top of main block, upper base of bevel and entire lower base, which are sand finished. With or without cross shown on top. Blue veined or white clouded marble. Lettering is extra.

**Total Height 2 feet 8 inches**  
**Main Block:** 1 ft. 4 in. wide, 4 in. thick, 1 ft. 8 in. high. **Upper Base:** 1 ft. 6 in. wide, 6 in. thick, 4 in. high. **Lower Base:** 1 ft. 10 in. wide, 10 in. thick, 8 in. high. Shipping weight about 375 pounds.  
**253 K 8835—Blue Veined.** Cash Price..... \$29.50  
 Easy Payment Price: Only \$5.00 with order and \$5.00 a month..... \$32.50  
**253 K 8836—White Clouded.** Cash Price..... \$31.00  
 Easy Payment Price: Only \$5.00 with order and \$5.00 a month..... \$34.00

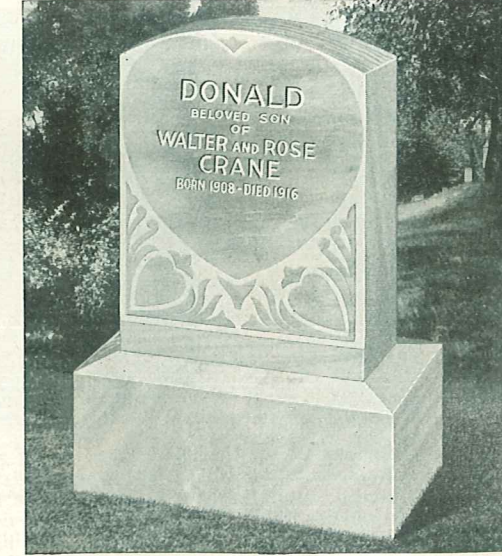
**Total Height 3 feet 3 inches**  
**Main Block:** 1 ft. 6 in. wide, 6 in. thick, 2 ft. high. **Upper Base:** 1 ft. 9 in. wide, 9 in. thick, 5 in. high. **Lower Base:** 2 ft. 2 in. wide, 1 ft. 2 in. thick, 10 in. high. Shipping weight about 500 pounds.  
**253 K 8837—Blue Veined.** Cash Price..... \$48.00  
 Easy Payment Price: Only \$5.00 with order and \$5.00 a month..... \$53.00  
**253 K 8838—White Clouded.** Cash Price..... \$49.50  
 Easy Payment Price: Only \$5.00 with order and \$5.00 a month..... \$54.50



**The "Westlawn"—Vermont Marble**

Entire main block is polished. Base has dull sand finish. Furnished in blue veined or white clouded marble. Lettering shown is 2-inch Gothic, raised, and 1-inch Gothic, V-sunk. If lettering ordered is not raised style, stone will be cut without panel. Lettering is extra; prices on Page 23. Metal dowels and cement included. Sold for Cash Only.

**Total Height 1 foot 6 inches**  
**Main Block:** 1 foot wide, 4 inches thick, 1 foot high. **Base:** 1 foot 4 inches wide, 6 inches thick, 6 inches high. Shipping weight about 125 pounds.  
**253 K 8845—Blue Veined Marble.**..... \$ 9.15  
**253 K 8846—White Clouded Marble.**..... 9.60  
**Total Height 1 foot 6 inches**  
**Main Block:** 1 foot wide, 5 inches thick, 1 foot high. **Base:** 1 foot 4 inches wide, 9 inches thick, 6 inches high. Shipping weight about 180 pounds.  
**253 K 8847—Blue Veined Marble.**..... \$10.70  
**253 K 8848—White Clouded Marble.**..... 11.30

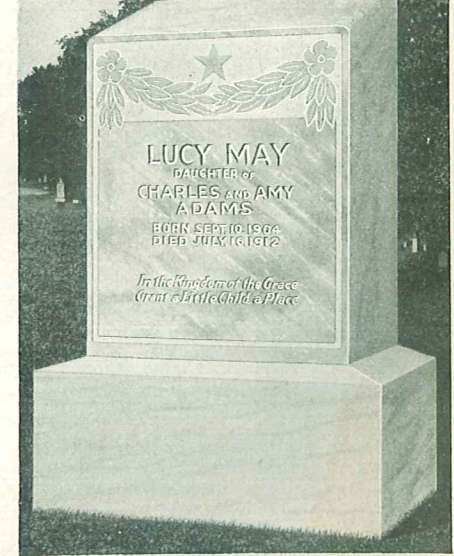


**The "Fairmont"—Vermont Marble**

The hearts of the parents and the little child are here symbolized. Blue veined or white clouded Vermont marble. Top and four sides of main block finely polished; design carved on front. Base has dull sand finish. Lettering shown is 2, 1 1/2 and 1-inch Roman, V-sunk. Lettering is extra; styles and prices on Page 23. Sold for Cash Only.

**Total Height 1 foot 8 inches**  
**Main Block:** 1 foot wide, 4 inches thick, 1 foot high. **Base:** 1 foot 4 inches wide, 8 inches thick, 8 inches high. Shipping weight about 150 pounds.  
**253 K 8840—Blue Veined Marble.**..... \$12.50  
**253 K 8841—White Clouded Marble.**..... 14.00

**Total Height 2 feet**  
**Main Block:** 1 foot 2 inches wide, 4 inches thick, 1 foot 4 inches high. **Base:** 1 foot 6 inches wide, 8 inches thick, 8 inches high. Shipping weight about 175 pounds.  
**253 K 8842—Blue Veined Marble.**..... \$16.50  
**253 K 8843—White Clouded Marble.**..... 18.00



**The "Elmgrove"—Vermont Marble**

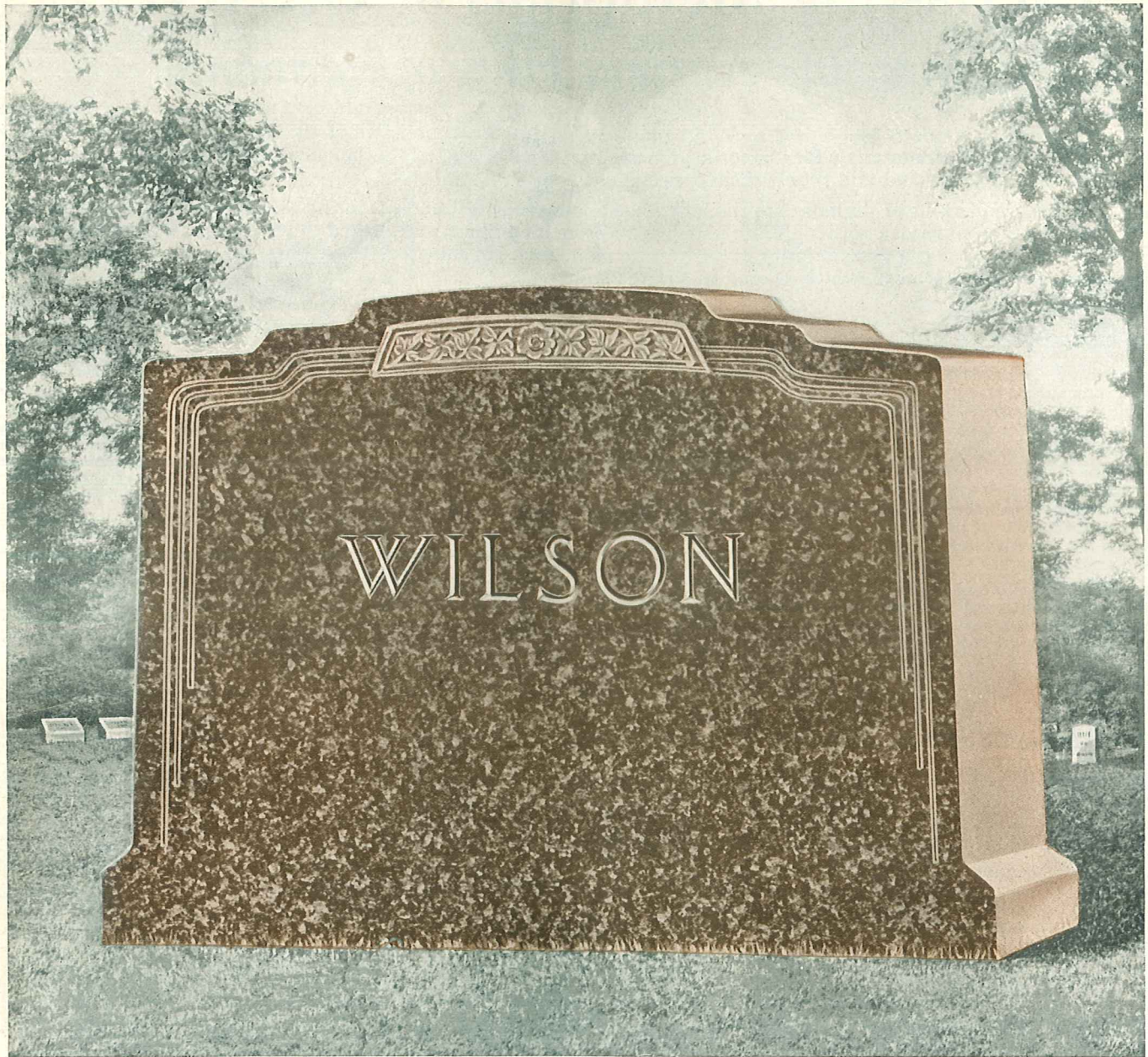
The four sides and top are polished; front has delicately traced design—the garland of sorrow and star of hope. Entire base is dull sand finish. Made of blue veined or white clouded marble. Lettering on largest stone is 2, 1 1/2 and 1-inch Gothic, V-sunk. Lettering is extra; prices on Page 23. Sold for Cash Only.

**Total Height 2 feet**  
**Main Block:** 1 foot 4 inches wide, 4 inches thick, 1 foot 4 inches high. **Base:** 1 foot wide, 8 inches thick, 8 inches high. Shipping weight about 180 pounds.  
**253 K 8830—Blue Veined Marble.**..... \$13.50  
**253 K 8831—White Clouded Marble.**..... 14.50

**Total Height 2 feet 2 inches**  
**Main Block:** 1 foot 2 inches wide, 4 inches thick, 1 foot 6 inches high. **Base:** 1 foot 6 inches wide, 8 inches thick, 8 inches high. Shipping weight about 225 pounds.  
**253 K 8832—Blue Veined Marble.**..... \$17.25  
**253 K 8833—White Clouded Marble.**..... 18.57

Monuments Listed Above Are Shipped From Rutland, Vermont

## Very Newest Design—Beautiful Monolith Tablet



### The "Wonderland"—Majestic Red Granite

Cash Price **\$203<sup>00</sup>** The Wonderland will forever be a symbol of peace, beauty, dignity—of utmost security—all you desire a memorial to express. Unlike the more conventional monuments, this stately tablet is formed of a single stone without a separate base. Can be used as a family or an individual monument. Used for either purpose, its rich glowing red, its pleasing contrast to sur-

rounding stones, its striking form, and its ease of reading, will make it a monument to stand apart, and to attract attention from all who visit the cemetery.

The front is highly polished with deep sand blown ornamentation. Top, ends and back are fine hammered finish.

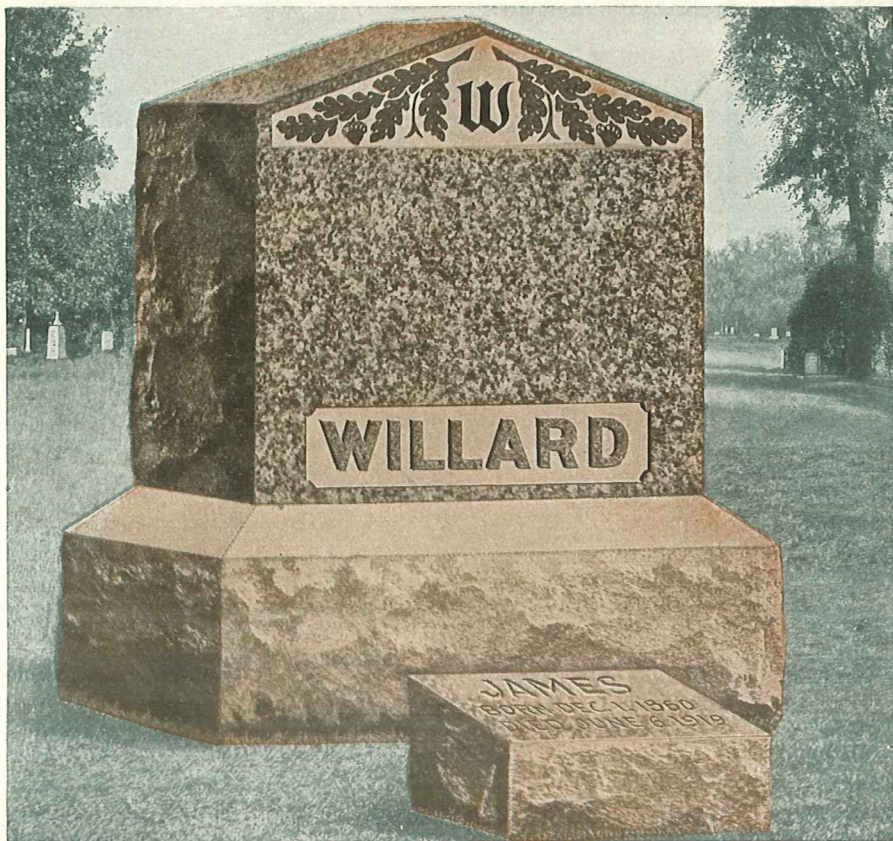
Lettering shown is Roman, V-sunk. All lettering is ordered extra. For other styles and prices see Page 23.

3 feet wide, 10 inches thick, 2 feet 6 inches high. Shipping weight about 1265 pounds.  
**253 K 8397**—Cash Price.....\$203.00  
 Easy Payment Price: Only \$25.00 down, \$20.00 a month..... 225.00

3 feet 8 inches wide, 1 foot thick, 2 feet 10 inches high. Shipping weight about 1755 pounds.  
**253 K 8898**—Cash Price.....\$250.00  
 Easy Payment Price: Only \$35.00 down, \$25.00 a month..... 275.00

Allow two to four weeks to engrave, finish and prepare Granite Monuments for shipment.  
 For freight rates to the city nearest your home, see Page 27.

Monuments Listed Above Shipped from Rutland, Vermont; Elmwood, Illinois or Portland, Oregon; as Explained on Page 3



The "Glenwood"—Majestic Red Granite

### The "Glenwood"

CUT from the finest Majestic Red Granite, rich in coloring and with a beauty that time or weathering does not dim. **Cash Price \$129.00**

The face of the main block is mirror polished, which makes it a deep glowing red. In a triangular panel against a background of hammered stone is a simple design of oak leaves and a space for the family initial, which will be cut in Old English lettering free of charge. *Print initial wanted.* Balance of main block is rock finished. Base is rock finished except the sloping bevel, which is hammered. Lettering shown is 5-inch raised Gothic, the size and style suitable for largest size monument. Lettering other than initial not included in price. For prices and other styles of lettering see Page 23.

Marker shown here is not included in the price of the Glenwood. For description of marker see Pages 16 and 17.

**Total Height 3 feet 4 inches**

**Main Block:** 1 foot 8 inches wide, 10 inches thick, 2 feet 2 inches high. **Base:** 2 feet 2 inches wide, 1 foot 4 inches thick, 1 foot 2 inches high. Shipping weight about 850 pounds.

**253 K 8908**  
Majestic Red Granite. Cash Price ..... \$89.00  
Easy Payment Price: Only \$10.00 down, \$10.00 a month. .... 98.00

**Total Height 3 feet 10 inches**

**Main Block:** 2 feet wide, 1 foot thick, 2 feet 6 inches high. **Base:** 2 feet 6 inches wide, 1 foot 6 inches thick, 1 foot 4 inches high. Shipping weight about 1750 pounds.

**253 K 8900**  
Majestic Red Granite. Cash Price ..... \$129.00  
Easy Payment Price: Only \$25.00 down, \$10.00 a month. .... 142.00

**Total Height 4 feet**

**Main Block:** 2 feet 4 inches wide, 1 foot thick, 2 feet 8 inches high. **Base:** 2 feet 10 inches wide, 1 foot 6 inches thick, 1 foot 4 inches high. Shipping weight about 2100 pounds.

**253 K 8901**  
Majestic Red Granite. Cash Price ..... \$149.00  
Easy Payment Price: Only \$25.00 down, \$15.00 a month. .... 164.00

## Popular Double Headstones — Red Granite



### An Exceptional Value

**T**HIS handsome Double Marker of Majestic Red Granite takes the place of two stones, and is especially suitable for husband and wife. It is rock finished except sloping top, which is hammered and has raised polished border and lettering. Base is made flat to set on foundation. Lettering is 4-inch and 2-inch Gothic. Lettering is extra; see Page 23.

- 2 feet 8 inches wide, 10 inches thick, 10 inches high. Shipping weight about 430 pounds.
- 253 K 8970**—Majestic Red Granite. Cash Price ..... \$40.00  
Easy Payment Price: Only \$5.00 down, \$5.00 a month. .... 44.00
- 3 feet wide, 10 inches thick, 10 inches high. Shipping weight about 650 pounds.
- 253 K 8971**—Majestic Red Granite. Cash Price ..... \$46.50  
Easy Payment Price: Only \$5.00 down, \$5.00 a month. .... 51.00
- 3 feet 6 inches wide, 1 foot thick, 1 foot high. Shipping weight about 780 pounds.
- 253 K 8972**—Majestic Red Granite. Cash Price ..... \$58.50  
Easy Payment Price: Only \$10.00 down, \$5.00 a month. .... 64.50
- 4 feet wide, 1 foot thick, 1 foot high. Shipping weight about 780 pounds.
- 253 K 8973**—Majestic Red Granite. Cash Price ..... \$62.00  
Easy Payment Price: Only \$10.00 down, \$5.00 a month. .... 68.50

### A Marker of Surpassing Beauty

**S**UITABLE for two people, as husband and wife, etc. Cut from the finest Majestic Red Granite, beautifully marked and unusually rich in coloring.

Slanting face of main block is highly polished with deep sunk sand blown ornamentation. Flat top of lower base is finely hammered and the sides natural rock finished. Lettering is sand blown. Gothic, V-sunk design. Lettering is extra; see Page 23. No other style of lettering can be ordered with this stone.

**Total Height 1 foot 10 inches**

**Main Block:** 3 feet wide, 10 inches thick, 1 foot 2 inches high. **Base:** 3 feet 6 inches wide, 1 foot 4 inches thick, 8 inches high. Shipping weight about 955 pounds.

Article Number	Cash Price	Easy Payment Price	Down Payment	Per Month
<b>253 K 8978</b>	\$115.00	\$126.00	\$15.00	\$15.00

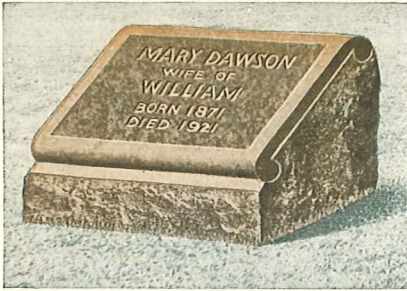
**Total Height 2 feet**

**Main Block:** 3 feet 4 inches wide, 1 foot thick, 1 foot 4 inches high. **Base:** 3 feet 10 inches wide, 1 foot 6 inches thick, 8 inches high. Shipping weight about 1325 pounds.

Article Number	Cash Price	Easy Payment Price	Down Payment	Per Month
<b>253 K 8979</b>	\$135.00	\$148.00	\$20.00	\$15.00

Allow two to four weeks to engrave, finish and prepare Granite Monuments for shipment. For freight rates to the city nearest your home, see Page 27.

# Majestic Red Granite Markers



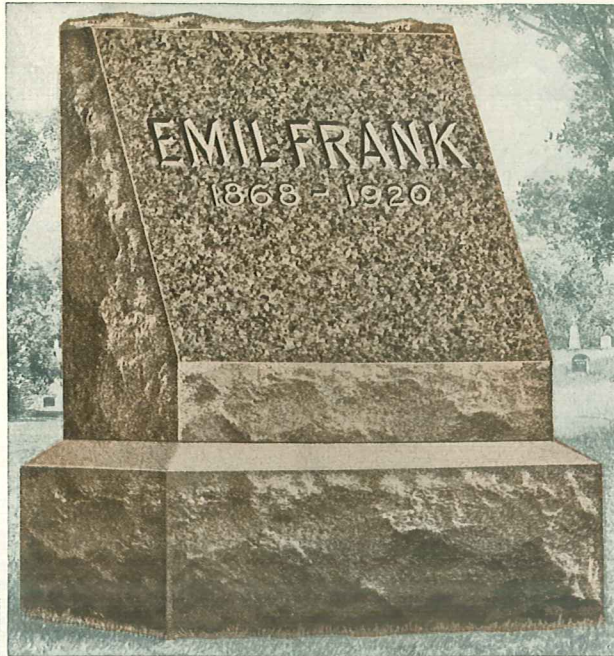
Gently sloping top and rolled edges make this Marker unusually pleasing. Four sides are rock finished. Top is polished with rolled margin of hammered stone. Made flat to set on foundation. Lettering is 2-inch and 1-inch Gothic, V-sunk. Lettering is extra; for prices see Page 23.

- 1 foot 6 inches wide, 10 inches thick, 10 inches high. Shipping weight about 230 pounds.  
**253 K 8941**—Cash Price..... \$28.50  
Easy Payment Price: Only \$5.00 with order and \$5.00 a month..... \$31.50
- 1 foot 8 inches wide, 1 foot thick, 1 foot high. Shipping weight about 380 pounds.  
**253 K 8942**—Cash Price..... \$33.00  
Easy Payment Price: Only \$5.00 with order and \$5.00 a month..... \$36.50
- 2 feet wide, 1 foot thick, 1 foot high. Shipping weight about 400 pounds.  
**253 K 8943**—Cash Price..... \$41.00  
Easy Payment Price: Only \$5.00 with order and \$5.00 a month..... \$46.00



Polished top is slightly pitched, which keeps rainwater from settling in lettering. Four sides are rock finished. Bottom is made flat to set on foundation. Lettering is 2 1/2-inch, V-sunk. Lettering is extra; prices on Page 23.

- 1 foot wide, 6 inches thick, 8 inches high. Shipping weight about 75 pounds.  
**253 K 8951**—Cash only..... \$11.75
- 1 foot 4 inches wide, 8 inches thick, 8 inches high. Shipping weight about 125 pounds.  
**253 K 8952**—Cash only..... \$15.50
- 1 foot 6 inches wide, 10 inches thick, 10 inches high. Shipping weight about 200 pounds.  
**253 K 8953**—Cash only..... \$19.50
- 1 foot 8 inches wide, 1 foot thick, 1 foot high. Shipping weight about 300 pounds.  
**253 K 8954**—Cash only..... \$21.00
- 2 feet wide, 1 foot thick, 1 foot high. Shipping weight about 400 pounds.  
**253 K 8955**—Cash only..... \$24.95



The "Oakdale"

Simple, dignified Monument for a single grave. The deeply beveled front of main block is mirror polished. All other surfaces are rock faced, except the hammered bevel about the base. Lettering shown is 3-inch and 1-inch, V-sunk. Lettering is extra. For other equally suitable styles of lettering and for prices see Page 23.

**Total Height 2 feet 6 inches**  
Main Block: 1 foot 6 inches wide, 8 inches thick, 1 foot 6 inches high. Base: 2 feet wide, 1 foot 2 inches thick, 1 foot high. Shipping weight about 700 pounds.

Article Number	Cash Price	Easy Payment Price	Down Payment	Per Month
<b>253 K 8904</b>	\$59.50	\$66.00	\$10.00	\$5.00

**Total Height 3 feet 2 inches**  
Main Block: 1 foot 10 inches wide, 10 inches thick, 2 feet high. Base: 2 feet 4 inches wide, 1 foot 4 inches thick, 1 foot 2 inches high. Shipping weight about 1150 pounds.

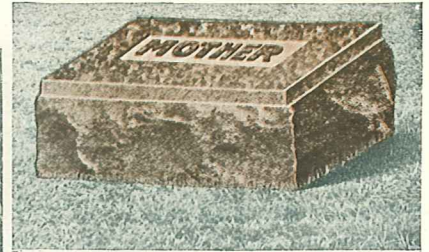
Article Number	Cash Price	Easy Payment Price	Down Payment	Per Month
<b>253 K 8905</b>	\$78.00	\$86.00	\$15.00	\$5.00

**Total Height 3 feet 8 inches**  
Main Block: 2 feet 2 inches wide, 1 foot thick, 2 feet 4 inches high. Base: 2 feet 8 inches wide, 1 foot 6 inches thick, 1 foot 4 inches high. Shipping weight about 1850 pounds.

Article Number	Cash Price	Easy Payment Price	Down Payment	Per Month
<b>253 K 8906</b>	\$113.00	\$125.00	\$15.00	\$10.00

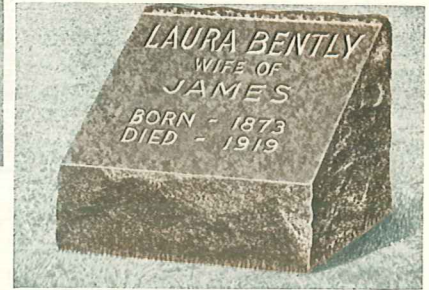
**Total Height 3 feet 10 inches**  
Main Block: 2 feet 6 inches wide, 1 foot thick, 2 feet 6 inches high. Base: 3 feet wide, 1 foot 6 inches thick, 1 foot 4 inches high. Ship. wt., 2150 lbs.

Article Number	Cash Price	Easy Payment Price	Down Payment	Per Month
<b>253 K 8907</b>	\$140.00	\$154.00	\$25.00	\$10.00



This distinctive Low Marker is suitable with any of our red granite Monuments or alone. Polished top is slightly pitched, which keeps rainwater from settling in lettering. Four sides rock finished with narrow hammered margin. Bottom is made flat to set on foundation. Lettering is 2 1/2-inch Gothic raised in panel. Lettering is extra; for prices see Page 23.

- 1 foot 8 inches wide, 10 inches thick, 10 inches high. Shipping weight about 250 pounds.  
**253 K 8944**—Cash Price..... \$24.50  
Easy Payment Price: Only \$5.00 with order and \$5.00 a month..... \$27.00
- 2 feet wide, 1 foot thick, 1 foot high. Shipping weight about 350 pounds.  
**253 K 8945**—Cash Price..... \$32.50  
Easy Payment Price: Only \$5.00 with order and \$5.00 a month..... \$36.00



Steeply sloped top is mirror polished. Four sides are rock finished. Bottom made flat to set on foundation. Lettering is extra.

- 1 foot wide, 6 inches thick, 6 inches high. Shipping weight about 90 pounds.  
**253 K 8958**—Sold for Cash only..... \$18.50
- 1 foot 2 inches wide, 8 inches thick, 1 foot 4 inches high. Shipping weight about 150 pounds.  
**253 K 8959**—Sold for Cash only..... \$21.50
- 1 foot 4 inches wide, 8 inches thick, 1 foot 4 inches high. Shipping weight about 200 pounds.  
**253 K 8960**—Sold for Cash only..... \$23.00
- 1 foot 6 inches wide, 10 inches thick, 1 foot 4 inches high. Shipping weight about 325 pounds.  
**253 K 8961**—Cash Price..... \$27.50  
Easy Payment Price: Only \$5.00 with order and \$5.00 a month..... \$30.50
- 1 foot 8 inches wide, 1 foot thick, 1 foot 4 inches high. Shipping weight about 350 pounds.  
**253 K 8962**—Cash Price..... \$31.00  
Easy Payment Price: Only \$5.00 with order and \$5.00 a month..... \$34.00
- 2 feet wide, 1 foot thick, 1 foot 4 inches high. Shipping weight about 360 pounds.  
**253 K 8963**—Cash Price..... \$37.00  
Easy Payment Price: Only \$5.00 with order and \$5.00 a month..... \$41.00



Cut from the finest Majestic Red Granite, beautifully marked and rich in coloring. The graceful roll is finely polished, with the ends in the rough rock finish. The entire base is rock faced also, except the sloping bevel, which is hammered. This Marker is made with a flat base to be set on a foundation. Lettering shown is of Gothic, V-sunk design. Other styles and prices quoted on Page 23. Lettering not included in price.

**Total Height 1 foot 6 inches**  
Roll: 1 foot 6 inches wide, 8 inches thick, 8 inches high. Base: 1 foot 6 inches wide, 10 inches thick, 10 inches high. Shipping weight about 375 pounds.

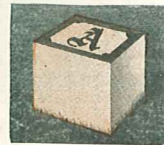
Article Number	Cash Price	Easy Payment Price	Down Payment	Per Month
<b>253 K 8948</b>	\$47.50	\$52.50	\$5.00	\$5.00

**Total Height 1 foot 10 inches**  
Roll: 1 foot 6 inches wide, 10 inches thick, 10 inches high. Base: 1 foot 8 inches wide, 1 foot thick, 1 foot high. Shipping weight about 500 pounds.

Article Number	Cash Price	Easy Payment Price	Down Payment	Per Month
<b>253 K 8949</b>	\$61.50	\$68.00	\$10.00	\$5.00

**Total Height 2 feet**  
Roll: 1 foot 10 inches wide, 1 foot thick, 1 foot high. Base: 2 feet wide, 1 foot thick, 1 foot high. Shipping weight about 800 pounds.

Article Number	Cash Price	Easy Payment Price	Down Payment	Per Month
<b>253 K 8950</b>	\$69.00	\$76.00	\$10.00	\$5.00



**A DESIGN.** Four sides hammered. Top polished. Lettering shown is Old English raised in panel. Lettering extra. Furnished in 6 by 6 and 8 by 8-inch sizes only.



**B DESIGN.** Four sides rock finished with hammered margin. Top polished. Lettering shown is Gothic raised in panel. Lettering is extra. In four sizes.



**C DESIGN.** Four sides rock finished with hammered margin. Top polished. Lettering shown, hammered sunk. Lettering extra. In four sizes.



**D DESIGN.** Four sides are rock finished. Top polished. Lettering shown, Old English raised in circular panel. Lettering extra. Furnished in four sizes.

Initial will be engraved on corner stone design you choose, at small additional cost. Be sure to print initial and state style of lettering wanted.

State design of corner stone and style of lettering wanted.

4 inches square, 4 inches high above ground. Made with 8-inch stub to be sunk in ground. Shipping weight about 80 pounds. Sold for Cash only.

Article Number	Style B	Style C	Style D
<b>253 K 8965</b>	\$7.35	\$5.45	\$3.10

5 inches square, 4 inches high above ground. Made with 8-inch stub to be sunk in ground. Shipping weight about 90 pounds. Sold for Cash only.

Article Number	Style B	Style C	Style D
<b>253 K 8966</b>	\$8.85	\$6.95	\$4.65

6 inches square, 6 inches above ground. Made with 8-inch stub to be sunk in ground. Shipping weight about 100 pounds. Sold for Cash only.

Article Number	Style A	Style B	Style C	Style D
<b>253 K 8967</b>	\$12.95	\$11.85	\$9.25	\$6.15

8 inches square, 8 inches high above ground. Made with 6-inch stub to be sunk in ground. Shipping weight about 125 pounds. Sold for Cash only.

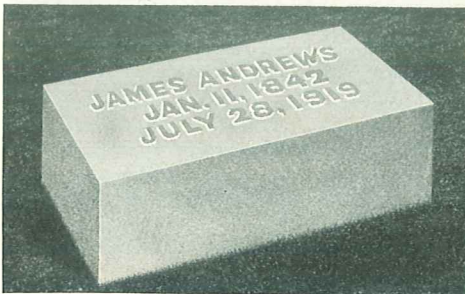
Article Number	Style A	Style B	Style C	Style D
<b>253 K 8968</b>	\$16.95	\$13.75	\$11.95	\$9.25



253 K 8451-2-3

Simple, nicely marked Stones such as this give the cemetery lot a neat, well-kept look. Four sides are rock finished. Sloping top is hammered, with raised border highly polished. Made with flat base to set on foundation. Lettering 2 1/2-inch and 1-inch Gothic, raised and polished. Lettering extra.

Height 10 inches. 1 foot 6 inches wide, 8 inches thick. Shipping weight about 180 pounds.  
**253 K 8451**—Dark Gray Barre Granite. Cash Price only.....\$18.50  
 Height 10 inches. 1 foot 8 inches wide, 10 inches thick. Shipping weight about 200 pounds.  
**253 K 8452**—Dark Gray Barre Granite. Cash Price only.....\$21.50  
 Height 1 foot. 2 feet wide, 1 foot thick. Shipping weight about 360 pounds.  
**253 K 8453**—Dark Gray Barre Granite. Cash Price \$27.50  
 Easy Payment Price: Only \$5.00 down, \$5.00 a month. 30.50



253 K 8436-7

Top and four sides have smooth, hammered finish (not polished). Base made flat to set on foundation. Lettering is 2-inch and 1-inch Gothic raised. Lettering extra; style and prices on Page 23.

Height 10 inches. 1 foot 8 inches wide, 10 inches thick. Shipping weight about 200 pounds.  
**253 K 8436**—Dark Gray Barre Granite. Cash Price \$35.50  
 Easy Payment Price: Only \$5.00 down, \$5.00 a month. 39.00  
 Height 1 foot. 2 feet wide, 1 foot thick. Shipping weight about 360 pounds.  
**253 K 8437**—Dark Gray Barre Granite. Cash Price \$45.50  
 Easy Payment Price: Only \$5.00 down, \$5.00 a month. 50.00



253 K 8455-6-7

Simple, well-proportioned Marker suitable to use with any of our Gray Granite Monuments. Four sides rock finished; flat top, highly polished, with deep cut border. Made with flat base to set on foundation. Lettering shown, 2-inch and 1-inch Gothic, V-sunk.

**253 K 8455**—Dark Gray Barre Granite. Height 10 inches. 1 foot 6 inches wide, 8 inches thick. Shipping weight about 180 pounds. Cash Price Only.....\$19.50  
**253 K 8456**—Dark Gray Barre Granite. Height 10 inches. 1 foot 8 inches wide, 10 inches thick. Shipping weight about 200 pounds. Cash Price.....\$22.75  
 Easy Payment Price: Only \$5.00 down, \$5.00 a month.....\$25.00  
**253 K 8457**—Dark Gray Barre Granite. Height 1 foot. 2 feet wide, 1 foot thick. Shipping weight about 360 pounds. Cash Price.....\$29.50  
 Easy Payment Price: Only \$5.00 down, \$5.00 a month.....\$32.50

## Gray Barre Granite Markers

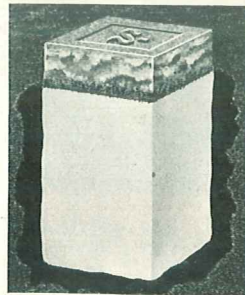
Our Low Prices Mean Big Savings



253 K 8459-60

Four sides rock finished. Steep, sloping top is highly polished. Made with flat base to set on foundation. Lettering is 2-inch, 1 1/2-inch and 1-inch Gothic, V-sunk. Lettering is extra; for other styles and prices see Page 23.

Height 1 foot 2 inches. 1 foot 8 inches wide, 10 inches thick. Shipping weight about 200 pounds.  
**253 K 8459**—Dark Gray Barre Granite. Cash Price.....\$27.50  
 Easy Payment Price: Only \$5.00 down, \$5.00 a month. 30.50  
 Height 1 foot 4 inches. 2 feet wide, 1 foot thick. Shipping weight about 360 pounds.  
**253 K 8460**—Dark Gray Barre Granite. Cash Price.....\$33.50  
 Easy Payment Price: Only \$5.00 down, \$5.00 a month. 37.00



253 K 8431-3-5

Corner Stones at the four corners of the family lot give it a neat well-cared-for appearance. Top is polished with family initials raised in hammered panel. Four sides rock finished. Made with stub; does not require foundation. Be sure to print initial wanted.

Height above ground 2 inches  
 4 inches wide, 4 inches thick. Shipping weight about 80 pounds.  
**253 K 8431**—Gray Barre Granite with 8-inch stub. Cash Price only.....\$3.95  
 Height above ground 4 inches  
 6 inches wide, 6 inches thick. Shipping weight about 100 pounds.  
**253 K 8433**—Gray Barre Granite with 8-inch stub. Cash Price only.....\$6.95  
 Height above ground 6 inches  
 8 inches wide, 8 inches thick. Shipping weight about 125 pounds.  
**253 K 8435**—Gray Barre Granite with 8-inch stub. Cash Price only.....\$10.75

Gray Granite Markers are designed to use with any of our Gray Granite Monuments or Tombstones. Unless otherwise stated, they are made with flat base, to be set on concrete foundation.

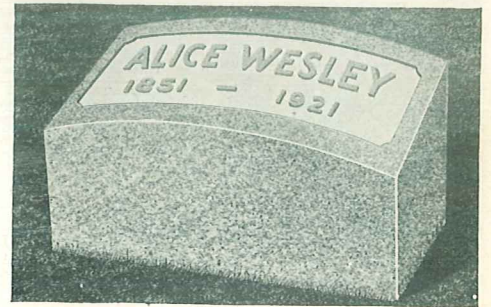
You can easily figure the freight rates from table on Page 27.



253 K 8447-8-9

Made of Gray Barre Granite, polished on sloping top; and four sides are smoothly hammered (not polished). Can be used with any of our Gray Granite Monuments or alone. Lettering shown is 2-inch, 1-inch and 1 1/2-inch Gothic, V-sunk. Made with flat base to set on foundation. Lettering is extra; styles and prices on Page 23.

Height 1 foot. 1 foot 4 inches wide, 8 inches thick. Shipping weight about 180 pounds.  
**253 K 8447**—Dark Gray Barre Granite. Cash Price \$37.50  
 Easy Payment Price: Only \$5.00 down, \$5.00 a month. 41.50  
 Height 1 foot 2 inches. 1 foot 8 inches wide, 10 inches thick. Shipping weight about 400 pounds.  
**253 K 8448**—Dark Gray Barre Granite. Cash Price \$54.50  
 Easy Payment Price: Only \$10.00 down, \$5.00 a month. 60.00  
 Height 1 foot 4 inches. 2 feet wide, 1 foot thick. Shipping weight about 480 pounds.  
**253 K 8449**—Dark Gray Barre Granite. Cash Price \$65.50  
 Easy Payment Price: Only \$10.00 down, \$5.00 a month. 72.00



253 K 8445-6

Richly polished on all four sides. Curved, sloping top has hammered panel for inscription, with polished border. Made flat to set on foundation. Lettering 2 1/2-inch Gothic, raised. Lettering is extra.

Height 1 foot. 1 foot 8 inches wide, 10 inches thick. Shipping weight about 200 pounds.  
**253 K 8445**—Dark Gray Barre Granite. Cash Price \$56.50  
 Easy Payment Price: Only \$10.00 down, \$5.00 a month. 62.00  
 Height 1 foot 2 inches. 2 feet wide, 1 foot thick. Shipping weight about 400 pounds.  
**253 K 8446**—Dark Gray Barre Granite. Cash Price \$69.50  
 Easy Payment Price: Only \$10.00 down, \$5.00 a month. 76.50



253 K 8438-9

Pillow style Marker, which may be used with any of our Gray Barre Granite Monuments. Steeple beveled face is finely hammered with inscription in raised round-topped letters, unpolished. Four sides are rock finished making a Marker which is dignified and unusual. Made with flat base to be set on concrete foundation. Lettering shown is 2 1/4-inch round topped, hammered, raised. Lettering is extra. For prices see Page 23.

**253 K 8438**—Gray Barre Granite. Height 1 foot 2 inches. 1 foot 8 inches wide, 10 inches thick. Shipping weight about 200 pounds. Cash Price.....\$34.50  
 Easy Payment Price: Only \$5.00 down, \$5.00 a month.....\$38.00  
**253 K 8439**—Gray Barre Granite. Height 1 foot 4 inches. 2 feet wide, 1 foot thick. Shipping weight about 400 pounds. Cash Price.....\$41.50  
 Easy Payment Price: Only \$5.00 down, \$5.00 a month.....\$46.00

# Enduring Monuments of Granite



**The "Highland"** If you decide upon the stately "Highland," you may have your choice of either Majestic Red or Dark Gray Barre Granite. In either it is a stone of beauty and dignity. Both front and back are mirror polished, while the gently curved top is hammered and sides have the rugged rock finish. Base is rock finished with a hammered bevel. If you wish your stone a little less in price you may have the front only polished and the back left rock faced. In either

style the front has a delicate traced design providing a space for the family initial, which will be traced at no additional charge. *Be sure to state initial wanted.*

Lettering shown is: Family name, 4-inch Gothic traced in panel; names and dates, 2 and 1-inch Gothic, V-sunk. Lettering other than initial is extra. For other styles see Page 23. Markers not included; see Pages 16 and 17.



**Total Height 3 feet 4 inches**  
**Main Block:** 2 feet wide, 10 inches thick, 2 feet 4 inches high. **Base:** 2 feet 6 inches wide, 1 foot 4 inches thick, 1 foot high. Shipping weight about 1260 pounds.

Front and Back Polished					
Article Number	Granite	Cash Price	Easy Payment Price	Down Payment	Per Month
253 K 8410	Dark Gray Barre	\$159.00	\$175.00	\$50.00	\$12.00
253 K 9230	Majestic Red	146.00	161.00	50.00	10.00

Front Polished Only					
253 K 9225	Dark Gray Barre	\$139.00	\$153.00	\$50.00	\$10.00
253 K 9232	Majestic Red	132.00	146.00	50.00	10.00

**Total Height 4 feet 2 inches**  
**Main Block:** 2 feet 6 inches wide, 1 foot thick, 2 feet 10 inches high. **Base:** 3 feet 2 inches wide, 1 foot 8 inches thick, 1 foot 4 inches high. Shipping weight 2280 pounds.

Front and Back Polished					
Article Number	Granite	Cash Price	Easy Payment Price	Down Payment	Per Month
253 K 8411	Dark Gray Barre	\$215.00	\$236.00	\$50.00	\$25.00
253 K 9236	Majestic Red	198.00	217.00	50.00	25.00

Front Polished Only					
253 K 9235	Dark Gray Barre	\$195.00	\$214.00	\$50.00	\$20.00
253 K 9237	Majestic Red	178.00	196.00	50.00	15.00

## The "Beechwood"

If you choose the "Beechwood" you will have a fitting and lasting Dark Gray Barre Granite memorial of beauty and dignity that will resist the ravages of time. The front of the main block is highly polished, with deep sand blown carving at the top, and axed panel for the name. Within the cross, the letters I H S are polished. The oval top, ends and back are natural rock finished. Sloping bevels of base are finely hammered and sides rock finished. Family name in sand blown letters. Gothic, V-sunk style only; see Page 23.

**Total Height 3 feet 2 inches**  
**Main Block:** 1 foot 6 inches wide, 8 inches thick, 2 feet 2 inches high. **Base:** 2 feet wide, 1 foot 2 inches thick, 1 foot high. Shipping weight about 760 pounds.

Article Number	Granite	Cash Price	Easy Payment Price	Down Payment	Per Month
253 K 9239	Dark Gray Barre	\$93.50	\$103.00	\$25.00	\$10.00

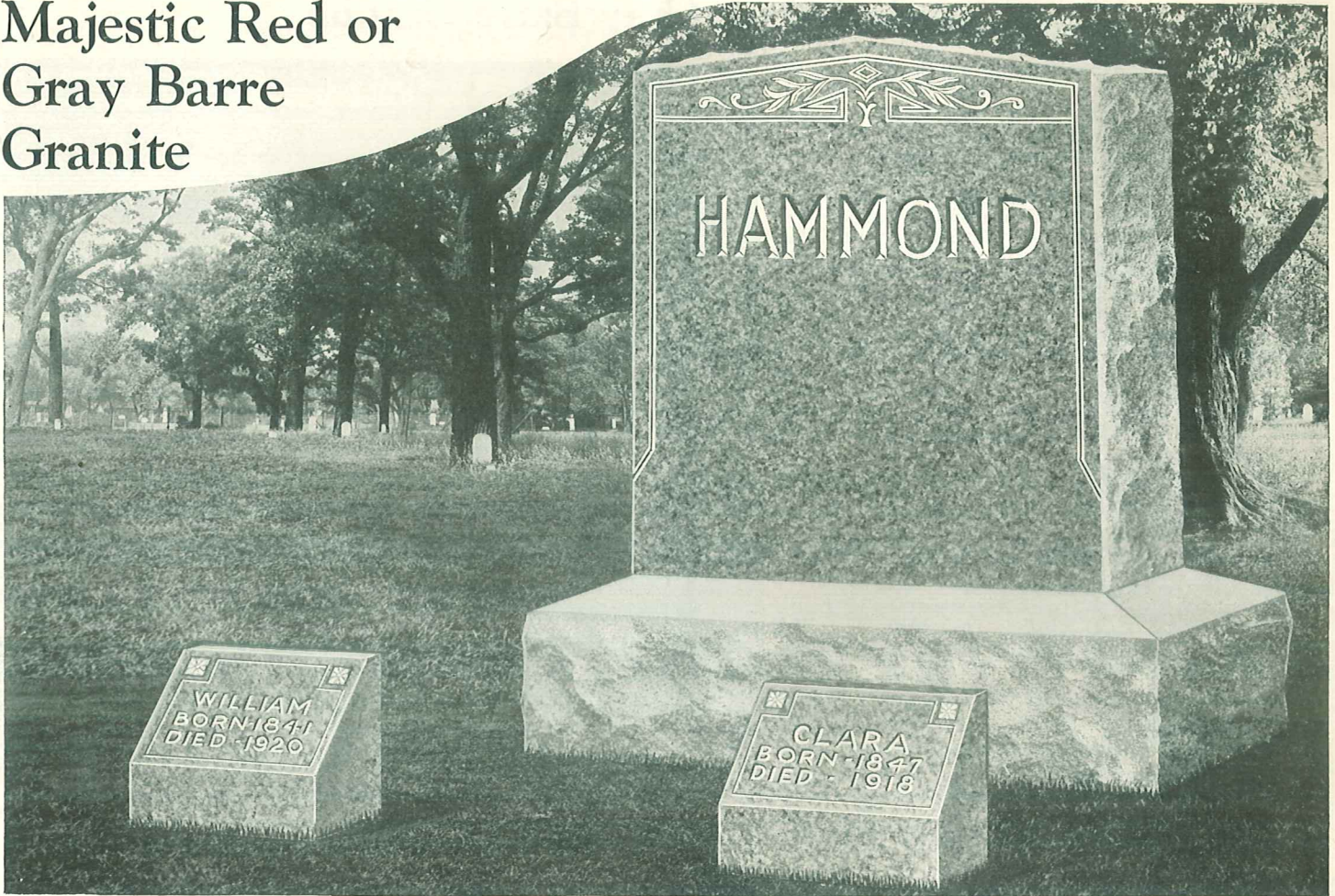
**Total Height 3 feet 6 inches**  
**Main Block:** 1 foot 10 inches wide, 10 inches thick, 2 feet 4 inches high. **Base:** 2 feet 4 inches wide, 1 foot 4 inches thick, 1 foot 2 inches high. Shipping weight about 1250 pounds.

Article Number	Granite	Cash Price	Easy Payment Price	Down Payment	Per Month
253 K 9240	Dark Gray Barre	\$120.00	\$132.00	\$25.00	\$12.00

The "Beechwood"—Dark Gray Barre Granite

Monuments Listed Above Shipped from Rutland, Vermont; Elmwood, Illinois; or Portland, Oregon; as Explained on Page 3

# Majestic Red or Gray Barre Granite



**The "Glendale"** The massive Glendale is—first of all—an imposing family monument. But the care and sincerity with which every detail of workmanship and material has been watched, assure you that for centuries it will remain a sturdy, beautiful

**Total Height 3 feet 4 inches**  
**Main Block:** 2 feet wide, 10 inches thick, 2 feet 4 inches high. **Base:** 2 feet 6 inches wide, 1 foot 4 inches thick, 1 foot high. Shipping weight about 1260 pounds.

Article Number	Granite	Cash Price	Easy Payment Price	Down Payment	Per Month
253 K 8415	Dark Gray Barre	\$107.00	\$117.50	\$20.00	\$10.00

**Total Height 3 feet 10 inches**  
**Main Block:** 2 feet 4 inches wide, 1 foot thick, 2 feet 8 inches high. **Base:** 3 feet wide, 1 foot 8 inches thick, 1 foot 2 inches high. Shipping weight about 2080 pounds.

Article Number	Granite	Cash Price	Easy Payment Price	Down Payment	Per Month
253 K 8416	Dark Gray Barre	\$142.50	\$157.00	\$25.00	\$15.00

**Total Height 4 feet 4 inches**  
**Main Block:** 2 feet 8 inches wide, 1 foot thick, 3 feet high. **Base:** 3 feet 4 inches wide, 1 foot 8 inches thick, 1 foot 4 inches high. Shipping weight about 2680 pounds.

Article Number	Granite	Cash Price	Easy Payment Price	Down Payment	Per Month
253 K 8417	Dark Gray Barre	\$179.00	\$196.00	\$25.00	\$20.00

**The "Elmwood"** Simple and conservative, the Elmwood will always be in good taste. It is cut from the finest stone and may be had either in Majestic Red Granite or the beautiful Dark Gray Barre Granite. In either, the top and front will be highly polished, the back and sides rock finished. Base is rock finished with a hammered bevel. Lettering shown, suitable for the largest monument, is 2-inch and 1-inch Gothic, V-sunk. Lettering is extra. Prices and other suitable styles of lettering are shown on Page 23.

Cash Price  
**\$76.00**

**Total Height 3 feet**  
**Main Block:** 1 foot 4 inches wide, 8 inches thick, 2 feet high. **Base:** 1 foot 9 inches wide, 1 foot 1 inch thick, 1 foot high. Shipping weight about 650 pounds.

Article Number	Granite	Cash Price	Easy Payment Price	Down Payment	Per Month
253 K 9210	Dark Gray Barre	\$76.00	\$83.50	\$10.00	\$10.00
253 K 8913	Majestic Red	71.00	78.50	10.00	10.00

**Total Height 3 feet 2 inches**  
**Main Block:** 1 foot 6 inches wide, 10 inches thick, 2 feet high. **Base:** 2 feet wide, 1 foot 4 inches thick, 1 foot 2 inches high. Shipping weight about 1050 pounds.

Article Number	Granite	Cash Price	Easy Payment Price	Down Payment	Per Month
253 K 9211	Dark Gray Barre	\$91.50	\$101.00	\$10.00	\$10.00
253 K 8914	Majestic Red	84.50	93.00	10.00	10.00

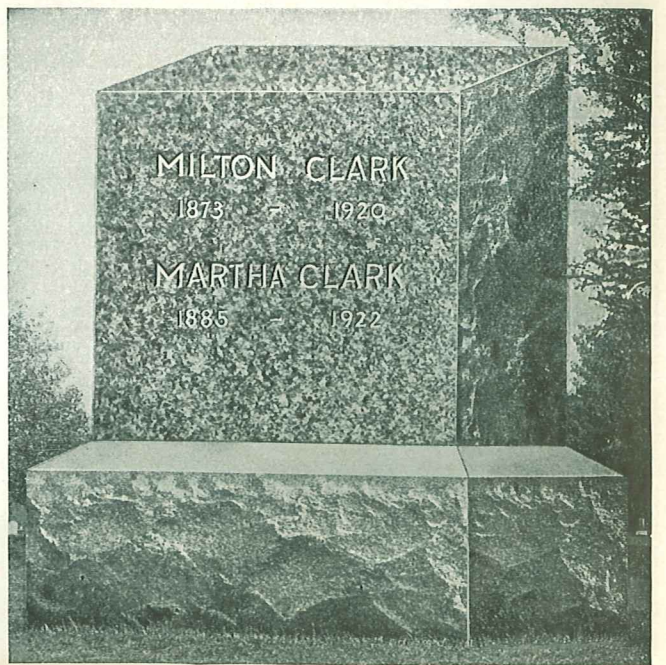
**Total Height 3 feet 8 inches**  
**Main Block:** 2 feet wide, 1 foot thick, 2 feet 4 inches high. **Base:** 2 feet 6 inches wide, 1 foot 6 inches thick, 1 foot 4 inches high. Shipping weight about 1730 pounds.

Article Number	Granite	Cash Price	Easy Payment Price	Down Payment	Per Month
253 K 9212	Dark Gray Barre	\$139.00	\$152.00	\$25.00	\$15.00
253 K 8915	Majestic Red	125.00	137.50	20.00	15.00

**Total Height 4 feet**  
**Main Block:** 2 feet 6 inches wide, 1 foot thick, 2 feet 8 inches high. **Base:** 3 feet wide, 1 foot 6 inches thick, 1 foot 4 inches high. Shipping weight about 2300 pounds.

Article Number	Granite	Cash Price	Easy Payment Price	Down Payment	Per Month
253 K 9213	Dark Gray Barre	\$160.00	\$176.00	\$25.00	\$15.00
253 K 8916	Majestic Red	157.50	173.00	25.00	15.00

family memorial. Quarried from fine grained enduring Gray Barre Granite. Front of main block is highly polished. Sides, top and back are rock finished. Base is rock finished except bevel, which is finely hammered. Simple decoration is deeply traced into stone and stands out well against the polished surface. Lettering on largest stone as pictured is 4-inch Gothic, V-sunk; for other styles and prices see Page 23. All lettering is extra. Markers not included; see Pages 16 and 17.



The "Elmwood"—Granite

## Beautiful Dark Gray Barre Granite

### The "Columbia"—Dark Gray Barre Granite

THE knowledge that the gray granite of this Monument comes from the quarries at Barre, Vermont, is all the assurance you need of its high quality. For years Barre Gray Granite has been acclaimed the best stone available for monuments and tombstones, not only because of its beauty, but because its freedom from blemishes makes it practically imperishable.

In each detail of design and workmanship, the Columbia measures up to the standard of the fine stone from which it is cut. The front of the main block is mirror polished, which brings out the deep gray tone of the stone. At the slightly rounded upper corners simple designs of leaves and tendrils are traced, and a narrow traced border frames the inscription. Back, top and edges of main block are rock finished, as is the entire base except the bevel, which is finely hammered. Lettering is Gothic, V-sunk; the family name in 4-inch size and given names and dates in 1½-inch lettering. While this is a very good choice for this design, other styles and prices are shown on Page 23. All lettering is extra.

Cash Price  
**\$92.50**

**Total Height 3 feet**  
Main Block: 1 foot 10 inches wide, 10 inches thick, 2 feet high. Base: 2 feet 4 inches wide, 1 foot 4 inches thick, 1 foot high. Shipping weight about 1050 pounds.

Article Number	Cash Price	Easy Payment Price	Down Payment	Per Month
253 K 8422	\$92.50	\$102.00	\$10.00	\$10.00

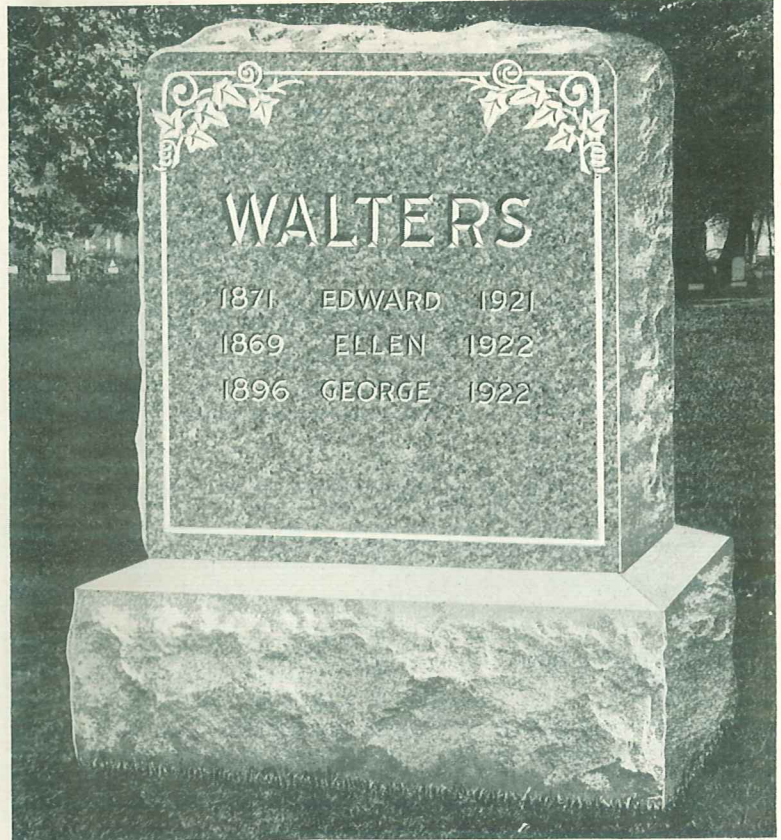
**Total Height 3 feet 6 inches**  
Main Block: 2 feet 2 inches wide, 1 foot thick, 2 feet 4 inches high. Base: 2 feet 8 inches wide, 1 foot 6 inches thick, 1 foot 2 inches high. Shipping weight about 1650 pounds.

Article Number	Cash Price	Easy Payment Price	Down Payment	Per Month
253 K 8423	\$118.50	\$130.00	\$15.00	\$10.00

**Total Height 4 feet**  
Main Block: 2 feet 6 inches wide, 1 foot thick, 2 feet 8 inches high. Base: 3 feet 2 inches wide, 1 foot 8 inches thick, 1 foot 4 inches high. Shipping weight about 2300 pounds.

Article Number	Cash Price	Easy Payment Price	Down Payment	Per Month
253 K 8424	\$149.00	\$164.00	\$20.00	\$10.00

It requires two to four weeks to letter and finish Gray Granite Stones properly. Keep this in mind when sending your order.



The "Columbia"—Dark Gray Barre Granite

### The "Parkdale"

THIS handsome stone will always be a source of pleasure to the buyer. It will endure and retain its beauty for centuries to come. Cash Price **\$167.00**

For the final resting place—a dignified memorial of flawless, finest quality Dark Gray Barre Granite. Front of main block is highly polished with deep sand blown ornamentation. Top, ends and back are natural rock finished. Sloping bevels of base are finely hammered and the sides natural rock finished. Sand blown lettering of Gothic, V-sunk design. Lettering is ordered extra. For other styles and prices see Page 23.

**Total Height 3 feet 2 inches**  
Main Block: 3 feet wide, 10 inches thick, 2 feet 2 inches high. Base: 3 feet 8 inches wide, 1 foot 4 inches thick, 1 foot high. Shipping weight about 2005 pounds.

Article Number	Cash Price	Easy Payment Price	Down Payment	Per Month
253 K 8441	\$167.00	\$184.00	\$20.00	\$15.00

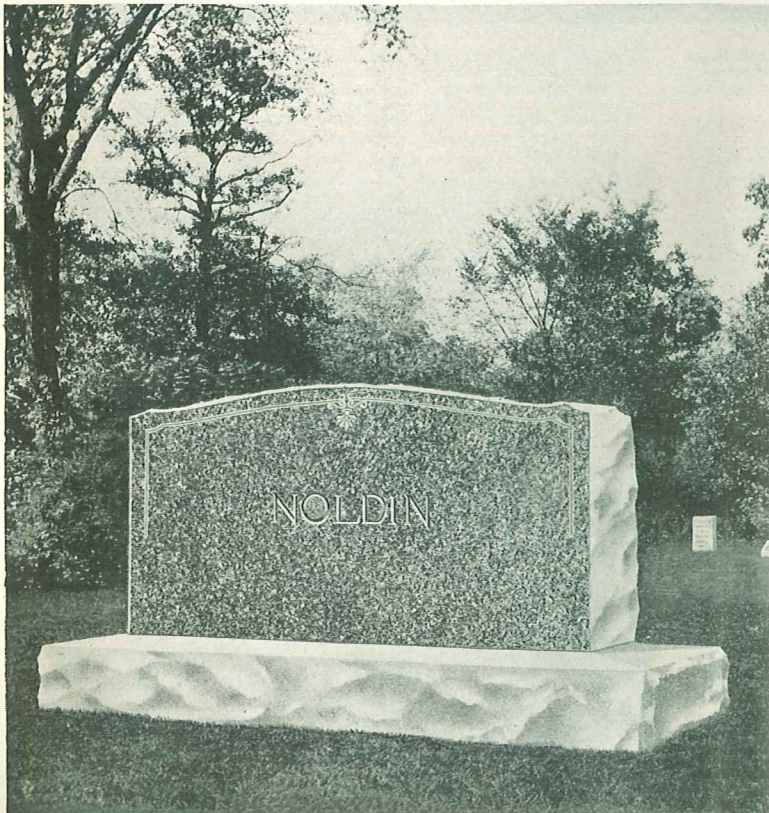
**Total Height 3 feet 4 inches**  
Main Block: 3 feet 6 inches wide, 1 foot thick, 2 feet 4 inches high. Base: 4 feet 2 inches wide, 1 foot 6 inches thick, 1 foot high. Shipping weight about 2753 pounds.

Article Number	Cash Price	Easy Payment Price	Down Payment	Per Month
253 K 8442	\$206.00	\$227.00	\$25.00	\$20.00

We receive hundreds of testimonials, telling us of the wonderful quality and money saved by purchasing monuments from Ward's. Compare these prices with others and see for yourself.

In order to help you choose the best and most suitable lettering for the monument you buy, we have shown on each stone in this book the most appropriate style and size of letter for the largest size monument of that design. You are free, however, to select any style of lettering which you wish; and on Page 23 we show the styles and tell you briefly on what stones they will be most effective and appropriate.

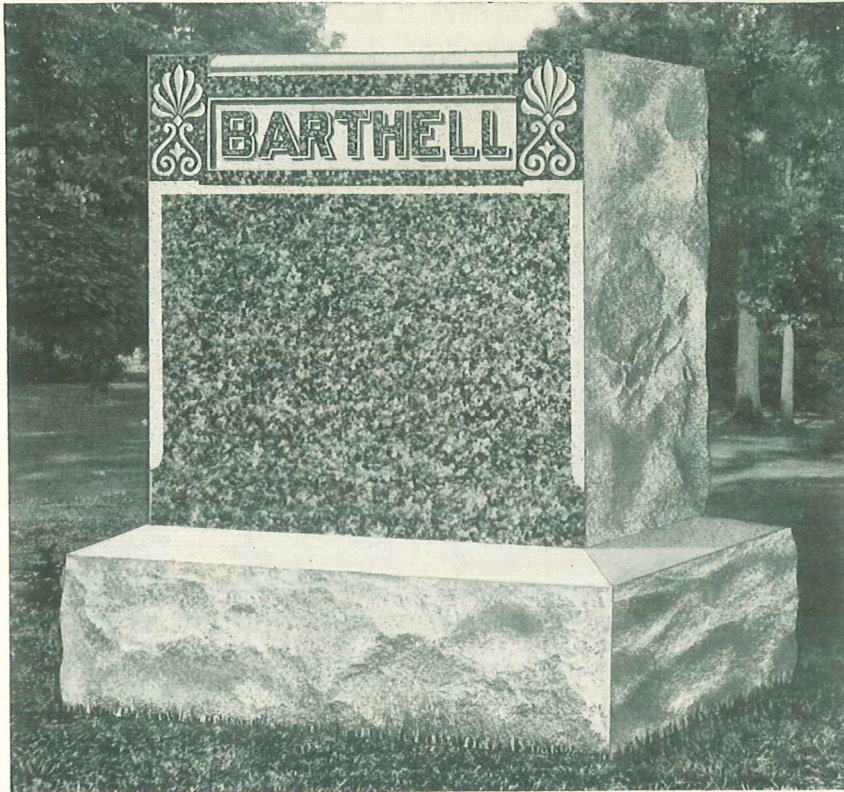
Military or fraternal emblems will be suitable on either of these monuments. Official designs and prices are shown on Page 22.



The "Parkdale"



## Majestic Red or Dark Gray Barre Granite



The "Flowerhill"—Red or Gray Granite

The "Flowerhill"—Red or Gray Granite  
 THIS beautiful, dignified monument will be cut for you from the stone you prefer—either rich Majestic Red Granite or Dark Gray Barre Granite. The front of the main block is mirror polished with a margin and sloping bevel of hammered stone. Simple traced design sets off the panel, which provides space for the family name. Top, sides and back are rock finished. Base is rock finished except hammered bevel. Lettering shown is 3½-inch raised Gothic, suitable for largest stone. All lettering is extra. For prices of lettering see Page 23.

**Total Height 3 feet 9 inches**  
**Main Block:** 2 feet 2 inches wide, 10 inches thick, 2 feet 6 inches high.  
**Base:** 2 feet 8 inches wide, 1 foot 4 inches thick, 1 foot 3 inches high. Shipping weight about 1650 pounds.

Article Number	Granite	Cash Price	Easy Pay Price	Down Pay't	Per Month
253 K 9220	Dark Gray Barre	\$155.00	\$171.00	\$20.00	\$15.00
253 K 8889	Majestic Red	139.00	153.00	20.00	15.00

**Total Height 3 feet 11 inches**  
**Main Block:** 2 feet 4 inches wide, 1 foot thick, 2 feet 8 inches high. **Base:** 2 feet 10 inches wide, 1 foot 6 inches thick, 1 foot 3 inches high. Shipping weight about 2100 pounds.

Article Number	Granite	Cash Price	Easy Pay Price	Down Pay't	Per Month
253 K 9221	Dark Gray Barre	\$175.00	\$193.00	\$25.00	\$20.00
253 K 8890	Majestic Red	159.00	175.00	20.00	15.00

### Majestic Red Granite for Permanence

It is the tiny drops of moisture seeping into the crevices of the rocks that cause them to break down, chip off and finally wear away. This seeping moisture, expanding under the sun's rays and contracting with the frost, strains and pulls at the firm crystals of the rock, until it finally forces them apart.

Majestic Red Granite is almost proof against the effect of the weather; it absorbs only one-fifth as much moisture as most granites and so it is far less liable to be injured by sun and frost. The bright, rich coloring, which makes Red Granite Monuments so beautiful, will endure for centuries without becoming dull and faded.

### The "Cambridge"—Dark Gray Barre Granite

FOR a family Monument—stately, graceful and enduring—the Cambridge is a stone of which you will always be proud. It is cut from Gray Barre Granite, the most imperishable stone obtainable for this purpose. The main block gives the impression of grace, in keeping with the gently tapered sides and curved top.

Front of main block has hammered finish and is decorated with a simple design deeply cut into the stone. Sides, top and back are rock finished.

Against the hammered face of the Cambridge, deep cut U-sunk lettering will be the most effective. So on this stone, unless you request otherwise, we will cut your inscription in U-sunk lettering at the same price we charge for the ordinary V-sunk lettering. Lettering shown is: Family name 3-inch Roman, V-sunk; given name 1½-inch Roman, V-sunk. For prices see V-sunk lettering on Page 23.

**Total Height 3 feet 10 inches**  
**Main Block:** 2 feet 4 inches wide, 10 inches thick, 2 feet 8 inches high.  
**Base:** 2 feet 10 inches wide, 1 foot 4 inches thick, 1 foot 2 inches high. Shipping weight about 1680 pounds.

Article Number	Cash Price	Easy Payments	Down Payment	Per Month
253 K 8400	\$129.00	\$142.00	\$20.00	\$15.00

**Total Height 4 feet 4 inches**  
**Main Block:** 2 feet 8 inches wide, 1 foot thick, 3 feet high. **Base:** 3 feet 4 inches wide, 1 foot 8 inches thick, 1 foot 2 inches high. Shipping weight about 2680 pounds.

Article Number	Cash Price	Easy Payments	Down Payment	Per Month
253 K 8401	\$175.00	\$193.00	\$25.00	\$20.00

### Gray Barre Granite

Our Dark Gray Barre Granite comes from the famous granite district around Barre (pronounced Barry), Vermont. For more than fifty years it has been used for the finest monuments; and it has come to be the standard by which all gray granites are measured.

Barre Granite has a fine grained, crystalline texture, and a warm rich coloring which does not fade or discolor. Because it is so hard it can be worked, shipped and erected with little danger of breaking.

We guarantee our Gray Barre Granite to be free from blemishes or defects.



The "Cambridge"—Dark Gray Barre Granite

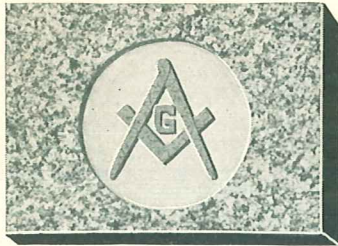
## Fraternal or Military Emblems May Be Carved on Any Monument

THE placing of a fraternal or military emblem on the monument is a pleasing and appropriate custom. Any of the emblems shown here can be engraved on the stone you have selected, at small additional cost. If the fraternal order or military insignia you wish is not shown here, send us a picture of it, and we will be glad to make it for you.

Traced emblems are made only on granite, they are cut through the polish only, but will remain as long as the stone endures.

Carved emblems are cut about one-eighth of an inch into the stone. On granite this requires more time, accounting for the difference in price. For the carved emblem, the panel is sunk by cutting deeply around the design, which gives it the raised effect.

No matter what emblem you choose, you can feel assured that the design will be absolutely correct and the work be perfectly done. Our guarantee to satisfy you or return your money, guards you against disappointment in workmanship or materials.



**Blue Lodge Masonic**

- On Marble**  
 253 K 8500—Carved.  
 Diameter, 4 inches . . . . . \$3.00  
 253 K 8501—Carved.  
 Diameter, 6 inches . . . . . 4.50
- On Granite**  
 253 K 8502—Traced.  
 Diameter, 4 inches . . . . . \$4.50  
 253 K 8503—Traced.  
 Diameter, 6 inches . . . . . 6.00  
 253 K 8504—Carved.  
 Diameter, 6 inches . . . . . 8.00



**Marine Corps**

- On Marble**  
 253 K 8560—Carved.  
 Diameter, 4 inches . . . . . \$3.00  
 253 K 8561—Carved.  
 Diameter, 6 inches . . . . . 4.50
- On Granite**  
 253 K 8562—Traced.  
 Diameter, 4 inches . . . . . \$4.50  
 253 K 8563—Traced.  
 Diameter, 6 inches . . . . . 6.00  
 253 K 8564—Carved.  
 Diameter, 6 inches . . . . . 8.00



**Modern Woodmen of America**

- On Marble**  
 253 K 8535—Carved.  
 Diameter, 4 in. . . . . \$3.00  
 253 K 8536—Carved.  
 Diameter, 6 in. . . . . 4.50
- On Granite**  
 253 K 8537—Traced.  
 Diameter, 4 in. . . . . \$4.50  
 253 K 8538—Traced.  
 Diameter, 6 in. . . . . 6.00  
 253 K 8539—Carved.  
 Diameter, 6 in. . . . . 8.00



**B. P. O. E.**

- On Marble**  
 253 K 8540—Carved.  
 Diameter, 4 in. . . . . \$3.00  
 253 K 8541—Carved.  
 Diameter, 6 in. . . . . 4.50
- On Granite**  
 253 K 8542—Traced.  
 Diameter, 4 in. . . . . \$4.50  
 253 K 8543—Traced.  
 Diameter, 6 in. . . . . 6.00  
 253 K 8544—Carved.  
 Diameter, 6 in. . . . . 8.00



**Grand Army of the Republic**

- On Marble**  
 253 K 8545—Carved.  
 Diameter, 4 in. . . . . \$3.00  
 253 K 8546—Carved.  
 Diameter, 6 in. . . . . 4.50
- On Granite**  
 253 K 8547—Traced.  
 Diameter, 4 in. . . . . \$4.50  
 253 K 8548—Traced.  
 Diameter, 6 in. . . . . 6.00  
 253 K 8549—Carved.  
 Diameter, 6 in. . . . . 8.00



**Ancient Order of Foresters**

- On Marble**  
 253 K 8555—Carved.  
 Diameter, 4 in. . . . . \$3.00  
 253 K 8556—Carved.  
 Diameter, 6 in. . . . . 4.50
- On Granite**  
 253 K 8557—Traced.  
 Diameter, 4 in. . . . . \$4.50  
 253 K 8558—Traced.  
 Diameter, 6 in. . . . . 6.00  
 253 K 8559—Carved.  
 Diameter, 6 in. . . . . 8.00



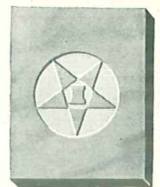
**Maccabees**

- On Marble**  
 253 K 8520—Carved.  
 Diameter, 4 in. . . . . \$3.00  
 253 K 8521—Carved.  
 Diameter, 6 in. . . . . 4.50
- On Granite**  
 253 K 8522—Traced.  
 Diameter, 4 in. . . . . \$4.50  
 253 K 8523—Traced.  
 Diameter, 6 in. . . . . 6.00  
 253 K 8524—Carved.  
 Diameter, 6 in. . . . . 8.00



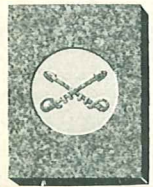
**Odd Fellows**

- On Marble**  
 253 K 8510—Carved.  
 Diameter, 4 in. . . . . \$3.00  
 253 K 8511—Carved.  
 Diameter, 6 in. . . . . 4.50
- On Granite**  
 253 K 8512—Traced.  
 Diameter, 4 in. . . . . \$4.50  
 253 K 8513—Traced.  
 Diameter, 6 in. . . . . 6.00  
 253 K 8514—Carved.  
 Diameter, 6 in. . . . . 8.00



**Eastern Star**

- On Marble**  
 253 K 8530—Carved.  
 Diameter, 4 in. . . . . \$3.00  
 253 K 8531—Carved.  
 Diameter, 6 in. . . . . 4.50
- On Granite**  
 253 K 8532—Traced.  
 Diameter, 4 in. . . . . \$4.50  
 253 K 8533—Traced.  
 Diameter, 6 in. . . . . 6.00  
 253 K 8534—Carved.  
 Diameter, 6 in. . . . . 8.00



**Cavalry**

- On Marble**  
 253 K 8480—Carved.  
 Diameter, 4 in. . . . . \$3.00  
 253 K 8481—Carved.  
 Diameter, 6 in. . . . . 4.50
- On Granite**  
 253 K 8482—Traced.  
 Diameter, 4 in. . . . . \$4.50  
 253 K 8483—Traced.  
 Diameter, 6 in. . . . . 6.00  
 253 K 8484—Carved.  
 Diameter, 6 in. . . . . 8.00



**Machine Gun**

- On Marble**  
 253 K 8485—Carved.  
 Diameter, 4 in. . . . . \$3.00  
 253 K 8486—Carved.  
 Diameter, 6 in. . . . . 4.50
- On Granite**  
 253 K 8487—Traced.  
 Diameter, 4 in. . . . . \$4.50  
 253 K 8488—Traced.  
 Diameter, 6 in. . . . . 6.00  
 253 K 8489—Carved.  
 Diameter, 6 in. . . . . 8.00



**Medical Corps**

- On Marble**  
 253 K 8490—Carved.  
 Diameter, 4 in. . . . . \$3.00  
 253 K 8491—Carved.  
 Diameter, 6 in. . . . . 4.50
- On Granite**  
 253 K 8492—Traced.  
 Diameter, 4 in. . . . . \$4.50  
 253 K 8493—Traced.  
 Diameter, 6 in. . . . . 6.00  
 253 K 8494—Carved.  
 Diameter, 6 in. . . . . 8.00



**Navy**

- On Marble**  
 253 K 8495—Carved.  
 Diameter, 4 in. . . . . \$3.00  
 253 K 8496—Carved.  
 Diameter, 6 in. . . . . 4.50
- On Granite**  
 253 K 8497—Traced.  
 Diameter, 4 in. . . . . \$4.50  
 253 K 8498—Traced.  
 Diameter, 6 in. . . . . 6.00  
 253 K 8499—Carved.  
 Diameter, 6 in. . . . . 8.00



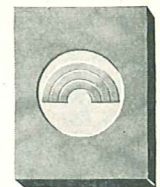
**Engineers**

- On Marble**  
 253 K 8580—Carved.  
 Diameter, 4 in. . . . . \$3.00  
 253 K 8581—Carved.  
 Diameter, 6 in. . . . . 4.50
- On Granite**  
 253 K 8582—Traced.  
 Diameter, 4 in. . . . . \$4.50  
 253 K 8583—Traced.  
 Diameter, 6 in. . . . . 6.00  
 253 K 8584—Carved.  
 Diameter, 6 in. . . . . 8.00



**Aviation**

- On Marble**  
 253 K 8575—Carved.  
 Diameter, 4 in. . . . . \$3.00  
 253 K 8576—Carved.  
 Diameter, 6 in. . . . . 4.50
- On Granite**  
 253 K 8577—Traced.  
 Diameter, 4 in. . . . . \$4.50  
 253 K 8578—Traced.  
 Diameter, 6 in. . . . . 6.00  
 253 K 8579—Carved.  
 Diameter, 6 in. . . . . 8.00



**Rainbow Division**

- On Marble**  
 253 K 8590—Carved.  
 Diameter, 4 in. . . . . \$3.00  
 253 K 8591—Carved.  
 Diameter, 6 in. . . . . 4.50
- On Granite**  
 253 K 8592—Traced.  
 Diameter, 4 in. . . . . \$4.50  
 253 K 8593—Traced.  
 Diameter, 6 in. . . . . 6.00  
 253 K 8594—Carved.  
 Diameter, 6 in. . . . . 8.00



**Quartermaster's Corps**

- On Marble**  
 253 K 8595—Carved.  
 Diameter, 4 in. . . . . \$3.00  
 253 K 8596—Carved.  
 Diameter, 6 in. . . . . 4.50
- On Granite**  
 253 K 8597—Traced.  
 Diameter, 4 in. . . . . \$4.50  
 253 K 8598—Traced.  
 Diameter, 6 in. . . . . 6.00  
 253 K 8599—Carved.  
 Diameter, 6 in. . . . . 8.00



**Daughters of Rebekah**

- On Marble**  
 253 K 8550—Carved.  
 Diameter, 4 in. . . . . \$3.00  
 253 K 8551—Carved.  
 Diameter, 6 in. . . . . 4.50
- On Granite**  
 253 K 8552—Traced.  
 Diameter, 4 in. . . . . \$4.50  
 253 K 8553—Traced.  
 Diameter, 6 in. . . . . 6.00  
 253 K 8554—Carved.  
 Diameter, 6 in. . . . . 8.00



**Mystic Shrine Masonic**

- On Marble**  
 253 K 8525—Carved.  
 Diameter, 4 in. . . . . \$3.00  
 253 K 8526—Carved.  
 Diameter, 6 in. . . . . 4.50
- On Granite**  
 253 K 8527—Traced.  
 Diameter, 4 in. . . . . \$4.50  
 253 K 8528—Traced.  
 Diameter, 6 in. . . . . 6.00  
 253 K 8529—Carved.  
 Diameter, 6 in. . . . . 8.00



**Knights of Pythias**

- On Marble**  
 253 K 8515—Carved.  
 Diameter, 4 in. . . . . \$3.00  
 253 K 8516—Carved.  
 Diameter, 6 in. . . . . 4.50
- On Granite**  
 253 K 8517—Traced.  
 Diameter, 4 in. . . . . \$4.50  
 253 K 8518—Traced.  
 Diameter, 6 in. . . . . 6.00  
 253 K 8519—Carved.  
 Diameter, 6 in. . . . . 8.50



**Artillery**

- On Marble**  
 253 K 8570—Carved.  
 Diameter, 4 in. . . . . \$3.00  
 253 K 8571—Carved.  
 Diameter, 6 in. . . . . 4.50
- On Granite**  
 253 K 8572—Traced.  
 Diameter, 4 in. . . . . \$4.50  
 253 K 8573—Traced.  
 Diameter, 6 in. . . . . 6.00  
 253 K 8574—Carved.  
 Diameter, 6 in. . . . . 8.00



**Signal Corps**

- On Marble**  
 253 K 8585—Carved.  
 Diameter, 4 in. . . . . \$3.00  
 253 K 8586—Carved.  
 Diameter, 6 in. . . . . 4.50
- On Granite**  
 253 K 8587—Traced.  
 Diameter, 4 in. . . . . \$4.50  
 253 K 8588—Traced.  
 Diameter, 6 in. . . . . 6.00  
 253 K 8589—Carved.  
 Diameter, 6 in. . . . . 8.00

# Important Information About Lettering

THE lettering is as important to the beauty of your monument as the design itself, and only our most skilled sculptors are entrusted with the cutting of inscriptions.

It is important that the style, size and arrangement of the lettering be carefully planned; and in order to help you, we have suggested the proper lettering for each of our stones. Unless you prefer some other style, you will be pleased and satisfied with our suggestion.

All lettering, unless otherwise stated, is extra. When you have decided on the size and style of letter you wish, you can easily figure the cost by referring to the list below, which gives the price per letter for every style and size.

When your order is received, we will send you a typewritten copy

of the inscription for your approval. Your wishes will be carried out absolutely, unless you have ordered a style of lettering which we cannot cut—such as polished letters on a hammered or rock faced stone, or a size so much too large or too small that we feel you will not be satisfied with it. In that case, our sculptors will use their own good judgment in selecting the proper letter.

If you wish us to arrange the lettering, send us the article number and size of the monument, and the inscription wanted, and we will gladly tell you the proper lettering and the cost of your monument complete.

The reason for the greater cost of lettering on granite is that granite is so much harder, and therefore more difficult to engrave.

## Gothic V-Sunk on Marble

LARGE letters like these may be used for the family name. In the smaller sizes, for given names only and dates. It may be used on either polished or unpolished marble. When family name is raised letter in panel, small letters like these may be used for individual names and dates.



253 K 8465—Gothic V-Sunk on Marble.

1-inch.	Each letter	15c
1½-inch.	Each letter	20c
2-inch.	Each letter	26c
2½-inch.	Each letter	48c
3-inch.	Each letter	58c
4-inch.	Each letter	75c
5-inch.	Each letter	85c

## Roman V-Sunk on Marble

LETTERS like this may be used for family name and dates on either polished or unpolished stone. They are frequently used for given names only and dates when family name is Gothic Raised in Panel. Makes effective lettering for either Blue or White Marble Monument.



253 K 8466—Roman V-Sunk on Marble.

1-inch.	Each letter	20c
1½-inch.	Each letter	25c
2-inch.	Each letter	40c
2½-inch.	Each letter	67c
3-inch.	Each letter	75c
3½-inch.	Each letter	85c
4-inch.	Each letter	95c

## Gothic Raised in Panel on Marble

USUALLY used for the family name, but on a large monument may be used for the entire inscription. This lettering is made by cutting away the stone around the letter, leaving it raised from ¼ to ½ inch in a hammered panel. When used on polished stone, face of letter will be polished.



253 K 8467—Gothic Raised on Marble.

1-inch, raised ¼-inch.	Each letter	\$ .35
1½-inch, raised ½-inch.	Each letter	.40
2-inch, raised ½-inch.	Each letter	.50
2½-inch, raised ½-inch.	Each letter	.80
3-inch, raised ¼-inch.	Each letter	.90
4-inch, raised ¼-inch.	Each letter	1.00
5-inch, raised ½-inch.	Each letter	1.20

## Regular Verse Letter on Marble

VERSE letters like this are used only for epitaphs or verses on marble monuments. Such verses are very frequently used on marble stones because the material is soft and can be cut easily and inexpensively with these small, graceful letters. When you order a verse or epitaph on a marble stone, this letter will be used, and the sculptor will decide what size will be most suitable and effective. For this reason, we quote only one size at a single price. On page 24 you will find a list of quotations popularly used for this purpose and price for each. This letter is not suitable for inscriptions, and can not be ordered for names, dates, etc. In small size only.

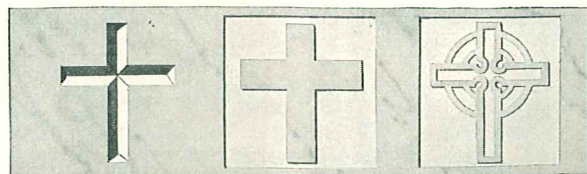


253 K 8468—Regular Verse on Marble.

Each letter	8c
-------------	----

## Cross Emblems

AN engraved, traced or V-sunk Cross is a pleasing addition to any stone, especially a small monument or marker. V-sunk crosses should be used with V-sunk lettering or hammered finish. Celtic and raised crosses are most effective on a polished finish.



V-Sunk Crosses	Raised in Panel	Celtic Crosses
253 K 8477— On Marble.	253 K 8461— On Marble.	253 K 8463— On Marble.
6-inch. Each. . . . . 75c	6-inch. Each. \$2.70	6-inch. Each. \$4.25
8-inch. Each. . . . . 95c	8-inch. Each. . . . . 3.50	8-inch. Each. . . . . 5.35
253 K 8478— On Granite.	253 K 8462— On Granite.	253 K 8464— On Granite.
6-inch. Each. \$3.00	6-inch. Each. \$6.00	6-inch. Each. \$8.00
8-inch. Each. . . . . 4.00	8-inch. Each. . . . . 7.50	8-inch. Each. . . . . 10.50

## Gothic V-Sunk on Granite

THIS letter is effective either on polished or unpolished granite. Large letters are suitable for family name; smaller sizes for given names and dates. In 1, 1½, 2 and 2½-inch sizes, this letter is frequently used for inscriptions when the family name is in Rock Faced, Hammered or Raised letters.

253 K 8469—Gothic V-Sunk on Granite.

1-inch.	Each letter	\$ .30
1½-inch.	Each letter	.40
2-inch.	Each letter	.50
2½-inch.	Each letter	.60
3-inch.	Each letter	.70
4-inch.	Each letter	.85
5-inch.	Each letter	1.00



## Rock Faced Raised in Panel on Granite

THIS letter can be used only on a rock finished granite monument. The 3-inch and 4-inch sizes are suitable for the family name, and smaller sizes for given names and dates. Made by cutting away the rough stone to leave the letter raised. The face of this letter is rock finished.

253 K 8470—Rock Faced Raised on Granite.

1½-inch, raised ¼-inch.	Each letter	\$ .90
2-inch, raised ¼-inch.	Each letter	1.15
2½-inch, raised ¼-inch.	Each letter	1.50
3-inch, raised ¼-inch.	Each letter	2.50
4-inch, raised ¼-inch.	Each letter	3.50
5-inch, raised ½-inch.	Each letter	4.50



## Round Top Hammered Raised on Granite

THIS is the most effective letter for a hammered finish stone. The 3 and 4-inch sizes are suitable for family name, smaller sizes for given names and dates. Letter is hammer finished in hammered panel. A polished letter can never be ordered for a monument with a rock or hammered finish.

253 K 8471—Round Topped Hammered on Granite.

1½-inch, raised ¼-inch.	Each letter	\$ 1.10
2-inch, raised ¼-inch.	Each letter	1.50
2½-inch, raised ¼-inch.	Each letter	1.95
3-inch, raised ¼-inch.	Each letter	2.95
4-inch, raised ¼-inch.	Each letter	3.95
5-inch, raised ½-inch.	Each letter	5.00



## Gothic Raised in Panel on Granite

THIS letter is generally used only for the family name, but on larger monuments may be used for entire inscription. Made by cutting away the stone around the letter to a depth of from ¼ to ½-inch. When ordered for a polished stone, face of letter will be polished; for hammered stone it will be hammered.

253 K 8472—Gothic Raised on Granite.

1½-inch, raised ¼-inch.	Each letter	\$ .90
2-inch, raised ¼-inch.	Each letter	1.10
2½-inch, raised ¼-inch.	Each letter	1.35
3-inch, raised ¼-inch.	Each letter	2.00
4-inch, raised ¼-inch.	Each letter	3.00
5-inch, raised ½-inch.	Each letter	4.00



Old English Initials on Marble

THE family initial is almost always used on corner stones, and carved on the family monument, adds greatly to its dignity and distinctiveness.

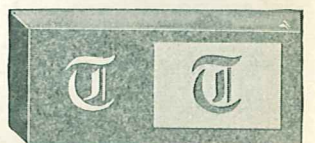
Traced without Panel	Traced in Panel
253 K 8473— On Marble.	253 K 8475— On Marble.
4-inch. Each. . . . . 75c	4-inch. Each. . . . . 75c
3-inch. Each. . . . . 65c	3-inch. Each. . . . . 65c

## Figures Cost the Same as Letters

FIGURES and dashes are the same price as letters of the same size, and are counted in the same way. For commas, periods and other punctuation there is no charge.

For Special Letters, Write Us

Old English Initials on Granite

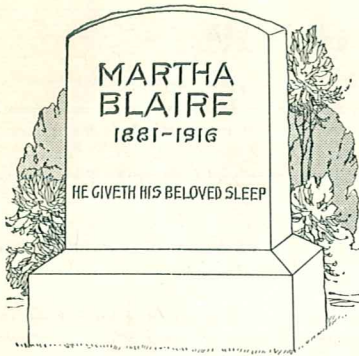


IT IS customary to carve the family initial on the foot or corner stone. It is most effective on the family monument.

Traced without Panel	Traced in Panel
253 K 8474— On Granite.	253 K 8476— On Granite.
4-inch. Each. \$1.25	4-inch. Each. \$2.50
3-inch. Each. . . . . 1.00	3-inch. Each. . . . . 2.00

## Epitaphs on Granite

THE regular verse letter used for epitaphs on marble does not show up well on granite, and so is never used. When you order an epitaph or verse engraved or traced in a granite stone, our sculptors will use a V-sunk or traced letter of a suitable size. For verses appropriate for epitaphs, see Page 24.



**For a Child**

**Our Little One**  
 253 K 8300—Marble..... \$ .96  
 253 K 8301—Granite..... 3.60

**Our Beloved Baby**  
 253 K 8302—Marble..... \$1.12  
 253 K 8303—Granite..... 4.20

**Of Such is the Kingdom of Heaven**  
 253 K 8304—Marble..... \$2.08  
 253 K 8305—Granite..... 7.80

**In Heaven there is one angel more**  
 253 K 8306—Marble..... \$2.16  
 253 K 8307—Granite..... 8.10

**Budded on earth, to bloom in Heaven**  
 253 K 8308—Marble..... \$2.24  
 253 K 8309—Granite..... 8.40

**Our Little One is living in our Hearts**  
 253 K 8310—Marble..... \$2.48  
 253 K 8311—Granite..... 9.30

**'Twas the Voice of Jesus called thee home**  
 253 K 8312—Marble..... \$2.64  
 253 K 8313—Granite..... 9.90

**Another little angel before the Heavenly Throne**  
 253 K 8361—Marble..... \$ 3.28  
 253 K 8362—Granite..... 12.30

**He Whose Love excelleth ours has taken our little child**  
 253 K 8315—Marble..... \$ 3.68  
 253 K 8316—Granite..... 13.80

**Sleep on, Sweet Babe, And take thy rest; God called thee Home; He thought it best.**  
 253 K 8317—Marble..... \$ 4.96  
 253 K 8318—Granite..... 18.60

**Suffer little children to come unto Me, and forbid them not, for of such is the Kingdom of Heaven.**  
 253 K 8319—Marble..... \$ 6.16  
 253 K 8320—Granite..... 23.40

**Lord, teach me to give back to Thee The treasure Thou didst lend to me**  
 253 K 8321—Marble..... \$ 4.40  
 253 K 8322—Granite..... 16.50

**Not in anger, not in wrath The Reaper came that day. An angel visited the earth And took our flower away.**  
 253 K 8323—Marble..... \$ 6.56  
 253 K 8324—Granite..... 24.60

**Sleep, little baby, sleep. Not in thy cradle bed, Not on thy mother's breast, Henceforth shall be thy rest, But with the quiet dead.**  
 253 K 8325—Marble..... \$ 8.00  
 253 K 8326—Granite..... 30.00

**Loving Shepherd of the sheep, Thou hast called Thy lamb away, Safely in Thy Fold to keep, Never more from Thee to stray.**  
 253 K 8327—Marble..... \$ 7.72  
 253 K 8328—Granite..... 27.20

# Verses

## Suitable for Inscriptions

IT is an old and beautiful custom to carve a verse or quotation upon the tomb, expressive of our love and sorrow. In this list you may find the words which will most fittingly express your own feelings. Granite is harder than marble and is consequently more expensive to carve. In marble, epitaph will be carved in regular verse letters only (shown on Page 23). In granite, V-sunk letters of suitable size will be used.

For your convenience, each quotation has an article number, which is all you need to give when sending us your order. If you wish to use a verse not given here, send us a copy of it and we will gladly tell you how much it will cost.

**For an Adult**

**At Rest**  
 253 K 8329—Marble..... \$ .48  
 253 K 8330—Granite..... 1.80

**Gone to Rest**  
 253 K 8331—Marble..... \$ .80  
 253 K 8332—Granite..... 3.00

**Rest in Peace**  
 253 K 8333—Marble..... \$ .88  
 253 K 8334—Granite..... 3.30

**Asleep in Jesus**  
 253 K 8335—Marble..... \$1.04  
 253 K 8336—Granite..... 3.90

**The morning cometh**  
 253 K 8337—Marble..... \$1.28  
 253 K 8338—Granite..... 4.80

**Sweet be thy slumber**  
 253 K 8339—Marble..... \$1.36  
 253 K 8340—Granite..... 5.10

**He giveth His beloved sleep**  
 253 K 8341—Marble..... \$1.84  
 253 K 8342—Granite..... 6.90

**Not my will, but Thine, be done**  
 253 K 8343—Marble..... \$1.84  
 253 K 8344—Granite..... 6.90

**From the Scriptures**

**I am the Resurrection and the Life.**—John xi, 26  
 253 K 8357—Marble..... \$2.24  
 253 K 8358—Granite..... 8.40

**Who walketh uprightly shall be saved.**—Prov. xxviii, 18  
 253 K 8375—Marble..... \$ 2.48  
 253 K 8376—Granite..... 9.30

**Father, into Thy Hands I commend my spirit.**—Luke xxiv, 46  
 253 K 8359—Marble..... \$ 3.52  
 253 K 8360—Granite..... 13.20

**Weep not, for she is not dead but sleepeth.**—Luke viii, 52  
 253 K 8363—Marble..... \$ 3.44  
 253 K 8364—Granite..... 12.90

**Them also that sleep in Jesus will God bring before him.**—1 Thess. iv, 14  
 253 K 8365—Marble..... \$ 4.40  
 253 K 8366—Granite..... 16.50

**I have fought a good fight; I have finished my course; I have kept the faith.**  
 253 K 8345—Marble..... \$ 4.80  
 253 K 8346—Granite..... 18.00

**She came to raise our hearts to Heaven. She goes to call us there.**  
 253 K 8347—Marble..... \$ 4.08  
 253 K 8348—Granite..... 15.30

**Life's work well done, He rests in peace.**  
 253 K 8349—Marble..... \$2.48  
 253 K 8350—Granite..... 8.70

**This to a mother's sacred memory her son hath hallowed**  
 253 K 8351—Marble..... \$ 3.52  
 253 K 8352—Granite..... 13.20

**Dearest loved one, we have laid thee In the peaceful grave's embrace. But thy memory shall be cherished**  
 253 K 8353—Marble..... \$ 8.56  
 253 K 8354—Granite..... 32.10

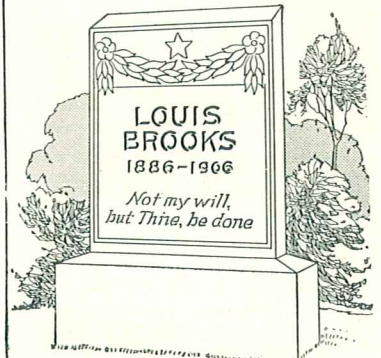
**The Golden Gates were opened wide A gentle voice said "Come," And angels from the other side Welcomed our dear one home.**  
 253 K 8355—Marble..... \$ 7.76  
 253 K 8356—Granite..... 29.10

**All things work together for good in them that love God.**  
 253 K 8369—Marble..... \$ 4.40  
 253 K 8370—Granite..... 16.50

**I sought the Lord and He heard me and delivered me from all my fears.**—Psalms xxxiv, 4  
 253 K 8371—Marble..... \$ 5.36  
 253 K 8372—Granite..... 20.10

**Be thou faithful unto death and I will give thee the crown of life.**—Rev. xi, 10  
 253 K 8367—Marble..... \$ 4.24  
 253 K 8368—Granite..... 15.90

**I am the Resurrection and the Life, and he that believeth in Me, though he were dead, yet shall he live.**—John xi, 25  
 253 K 8373—Marble..... \$ 7.04  
 253 K 8374—Granite..... 26.40



**For a Soldier**

**Soldier, rest. Thy work is done**  
 253 K 8377—Marble..... \$1.92  
 253 K 8378—Granite..... 7.20

**A brave man may fall, but cannot yield**  
 253 K 8379—Marble..... \$2.40  
 253 K 8380—Granite..... 9.00

**The greatest glory of a free born people is to transmit that freedom to their children.**  
 253 K 8381—Marble..... \$ 5.68  
 253 K 8382—Granite..... 21.30

**By all their country's wishes blest. Now sleep the brave who sink to rest**  
 253 K 8383—Marble..... \$ 4.64  
 253 K 8384—Granite..... 17.40

**In grateful memory of a brave soldier Who gave his life in defense of his country.**  
 253 K 8385—Marble..... \$ 5.28  
 253 K 8386—Granite..... 18.25

**Freedom's battle, once begun, Bequeathed from bleeding sire to son, Though baffled oft, is ever won.**  
 253 K 8387—Marble..... \$ 6.32  
 253 K 8388—Granite..... 23.70

**Beloved France, keep tender watch upon that quiet place Where rest, at last, in dreamless sleep the bravest of our race. What dearer tie could bind us fast until all time is still, Than the little row of crosses low that stand upon a hill?**  
 253 K 8389—Marble..... \$15.12  
 253 K 8390—Granite..... 56.70

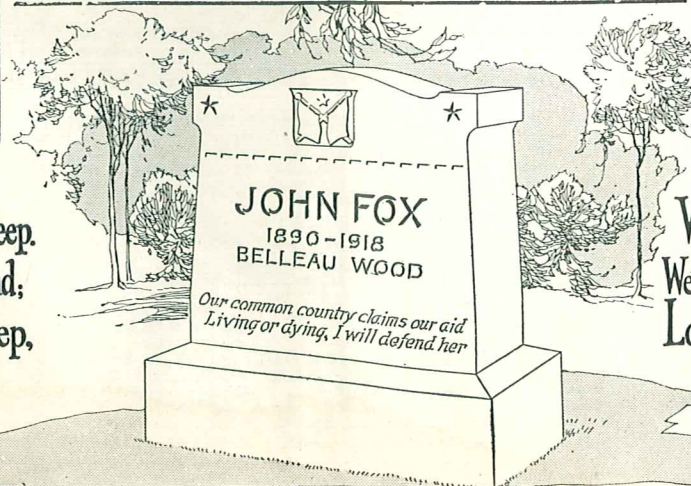
**He made the supreme sacrifice on the altar of freedom.**  
 253 K 8391—Marble..... \$ 3.52  
 253 K 8392—Granite..... 13.20

**He gave his life that others might live**  
 253 K 8393—Marble..... \$2.56  
 253 K 8394—Granite..... 9.40

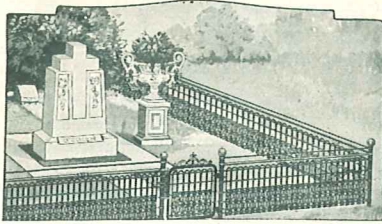
**We are the dead. Short days ago We lived, felt dawn, saw sunsets glow; Loved and were loved; and now we lie In Flanders Fields.**  
 253 K 8395—Marble..... \$ 7.92  
 253 K 8396—Granite..... 29.70

**There is a calm for those who weep. A rest for weary pilgrims found; They softly lie and sweetly sleep, Low in the ground.**  
 253 K 8397—Marble..... \$ 8.00  
 253 K 8398—Granite..... 28.50

There is a calm for those who weep.  
 A rest for weary pilgrims found;  
 They softly lie and sweetly sleep,  
 Low in the ground

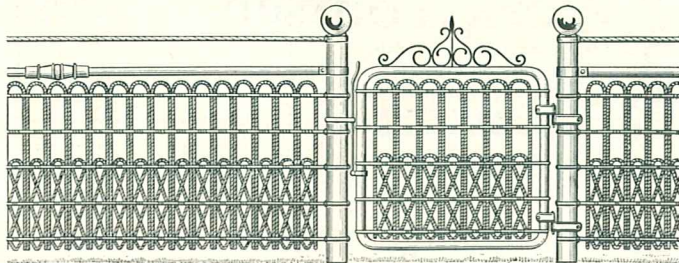
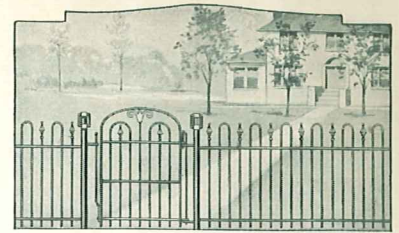


We are the dead. Short days ago  
 We lived, felt dawn, saw sunsets glow  
 Loved and were loved, and now we lie  
 In Flanders Fields



# Sturdy Iron Furniture and Fencing

An Added Touch of Beauty on Your Cemetery Lot

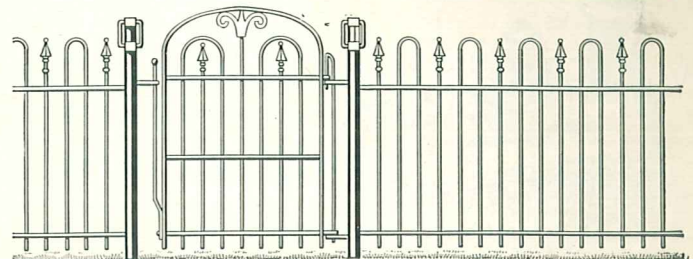


## "Lakewood" Lawn Fencing

Ornamental Fencing for lawn or cemetery lot. Posts and horizontal rail are tubular. Four-ply braided cable wire is stretched above horizontal rail. Fabric is No. 11 steel wire, heavily galvanized and firmly interwoven. Prices per foot are for fencing and line posts. Corner, end and gate posts extra. Shipped from Central Indiana.

Article Number	Total Height of Fence	Height of Fabric	Weight Per Foot	Price Per Foot
253 K 8180	42 inches	36 inches	9 pounds	\$0.40
253 K 8181	48 inches	42 inches	10 pounds	.44
253 K 8182	56 inches	48 inches	11 pounds	.47

Following are prices for Walk Gates and Posts:		Each
253 K 8183	Gate 3 feet wide for fencing	253 K 8180 ..... \$2.80
253 K 8184	Gate 3 feet wide for fencing	253 K 8181 ..... 2.85
253 K 8185	Gate 3 feet wide for fencing	253 K 8182 ..... 2.95
253 K 8194	End, corner, or gate post for	253 K 8180 ..... 2.25
253 K 8195	End, corner, or gate post for	253 K 8181 ..... 2.45
253 K 8196	End, corner, or gate post for	253 K 8182 ..... 2.60



## "Lincoln Park" Lawn Fencing

Pickets are round, about 4 inches apart, and securely fastened into the horizontal steel rails, giving each section the strength and durability of a welded mass. Pickets are malleable iron. Posts are cast iron, the most serviceable material for underground use. Prices per foot are for fencing and line posts only. Corner, gate or end posts extra. Dark green paint prevents rusting. Shipped from Western Ohio.

Article Number	Diameter of Pickets	Weight Per Foot	Height of Fence	Price Per Foot
253 K 8200	3/8 inch	10 pounds	3 feet	\$0.75
253 K 8201	1/2 inch	13 pounds	3 feet	.89
253 K 8202	5/8 inch	16 pounds	3 feet	1.00

Following are prices for Walk Gates and Posts:		Each
253 K 8191	Gate 3 ft. 2 in. wide for fencing	253 K 8200 ..... \$4.40
253 K 8192	Gate 3 ft. 2 in. wide for fencing	253 K 8201 ..... 4.55
253 K 8193	Gate 3 ft. 10 in. wide for fencing	253 K 8202 ..... 6.25
253 K 8190	End, corner, or gate post for fencing	253 K 8200 ..... 2.00

### When Ordering Iron Fencing

Send a diagram showing location of fence and location and size of gates. Represent fence by straight lines, leave openings where gates will be. Mark exact distance between end, corner and gate posts. Give width of gate and state whether to swing in or out.

### The "Hilldale" Vase



An especially good Vase for a cemetery where it is inconvenient to water plants frequently. A 1 1/2-gallon reservoir beneath the bowl keeps roots supplied with water for about two weeks without refilling. Made of cast iron, either coated with rust-resisting paint or unpainted. Shipped from Western New York.

**Total Height 20 inches**  
**Bowl:** Diameter at top 22 inches. Reservoir 1 1/2 gallons.  
**Base:** 14 inches wide, 14 inches thick.  
 Shipping weight about 81 pounds.  
 253 K 8207—Cast Iron Vase. Painted green..... \$10.65  
 253 K 8208—Cast Iron Vase. Unpainted..... 8.95

Height 1 foot 8 inches  
 With Reservoir



### The "Knollwood" Urn

Made from high grade cast iron, painted on all exposed surfaces. Beneath the gracefully shaped bowl is a reservoir of 1 1/2 gallons' capacity, which needs filling only occasionally. Water seeps up into the soil and keeps roots well watered. Bowl fastened securely to sturdy, well-proportioned pedestal. Made to set directly on ground; requires no foundation.

### For Lawn or Cemetery

**Size:** 36 inches high, 30 inches wide, including arms.  
**Bowl:** Diameter 22 inches at top. Capacity of reservoir 1 1/2 gallons.  
**Pedestal:** 14 inches wide, 14 inches thick. Shipped from Western New York. Shipping weight about 130 pounds.  
 253 K 8216—Cast Iron Urn. Painted green... \$17.85  
 253 K 8217—Cast Iron Urn. Unpainted..... 15.25

### Bouquet Holder

Handy Bouquet Holder of cast iron. Bowl is 6 inches in diameter. Made with prong to be stuck firmly in the ground. Painted white or green. State color wanted. Shipped from Factory in Western New York.  
 Shipping weight about 6 pounds.  
 253 K 8213—Cast Iron Bouquet Holder..... 3 for \$1.29



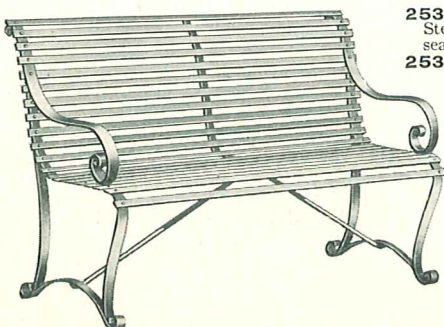
### Bouquet Holder

Convenient Vase for plants or flowers. In largest size, bowl is 6 inches in diameter and 9 inches deep, with prong to stick in ground. Made of cast iron, painted white or green. State color wanted. Shipped from Factory in Western New York.  
 Shipping weight 6 pounds.  
 253 K 8219—4 inch bowl... 3 for \$1.00  
 253 K 8220—5 inch bowl... 3 for 1.50  
 253 K 8221—6 inch bowl... 3 for 1.95



### Wrought Steel Settee

This sturdy Settee is made of wrought steel, and designed to provide a comfortable, rest-giving seat. Back, arms and legs are firmly braced, and entire seat is painted dark green. For lawn or cemetery lot it is a permanent investment, for there is no part which can wear or break with ordinary use, and the painted steel is little affected by exposure. Shipping weights 70 and 85 pounds. Shipped from Western New York.



253 K 8223 — Wrought Steel Settee. Length of seat 4 feet. \$11.50  
 253 K 8224 — Wrought Steel Settee. Length of seat 5 feet. \$12.50



### The "Lorraine"

### Cemetery Vase

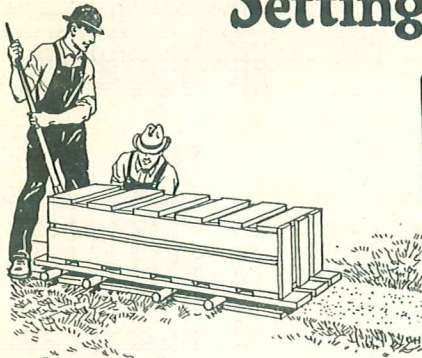
Small, inexpensive Vase for lawn or garden or for cemetery lots. Suitable for plants or flowers. Made of cast iron and either painted green or unpainted. State color wanted. Without reservoir. Total Height 20 inches  
**Bowl:** 9 inches in diameter, 10 inches deep. **Base:** 9 inches square. Shipping weight 30 pounds. Shipped from Western New York.  
 253 K 8230—Cast Iron Vase. Unpainted..... \$4.85  
 253 K 8229—Cast Iron Vase. Painted green..... 5.75

### Sturdy Garden Chair

This sturdy, comfortable Chair will add to your enjoyment of lawn, porch or garden, or in your cemetery lot to your comfort and convenience in tending the graves. Made of wrought steel; arms, back and legs are well braced; slats are riveted firmly to frame and entire chair painted with rust-resisting dark green paint. Seat is 24 inches wide, a good height, and is built in an easy, comfort-giving curve. Shipped from Western New York. Ship. wt. 50 lbs.  
 253 K 8227—Wrought Steel Chair..... \$10.50



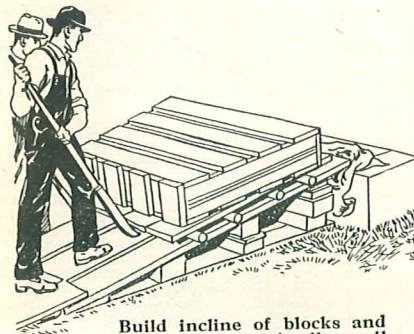
# Suggestions for Setting Monuments



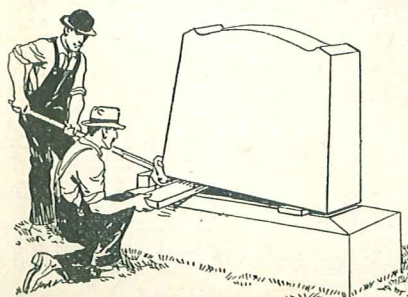
Roll base on wood rollers into place on the foundation. To protect stone from chipping, leave crating on until it is in final position.



Remove crate, and be sure stone sets firm, even and true on foundation.

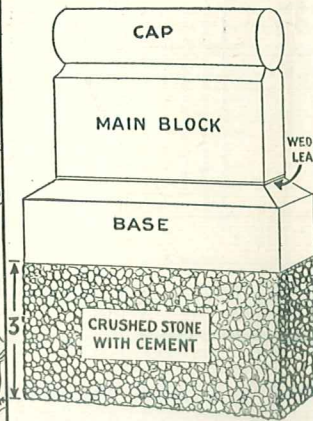


Build incline of blocks and planks, and on wood rollers roll main block into position on the base.



Remove the crate, and look at stone from every side to be sure that it stands perfectly level and true on base.

## Do the Work Yourself



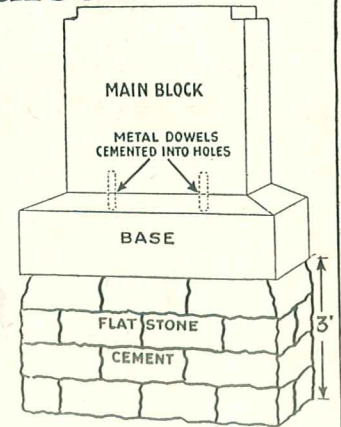
**B**EFORE erecting a Monument it is necessary to put in a foundation from three to five feet deep, depending on the size of the stone. The best foundation, especially for a granite or heavy marble stone, is of concrete; but for lighter monuments, brick or stone foundations are satisfactory.

Many cemeteries have their own rules governing the building of the foundation, or prefer to do the work themselves for a stated price. If you desire to build the foundation yourself, and there are no special rules governing it, we suggest the following method:

Excavate a hole three to five feet deep, the size of the lower base.

**Concrete Foundation:** Mix concrete of one part cement to four parts gravel or crushed stone, and fill excavation. Level off the top about two inches below the surface of the ground. The size at the top should be two inches smaller than the base of the monument.

Foundations should be built at least two weeks before the monument is set; for if the base is placed on cement not entirely set, the cement will stain the stone.



**Stone Foundation:** Put in a layer of several inches of stone, gravel or brick; mix cement and sand, one part to two, and run it into the crevices until level. Put in another layer of gravel or stone, pour in the cement; and continue putting in courses of stone and cement in this manner until within two inches of top. Taper top in about two inches all around, so foundation will not show. Be sure to leave the top level.

### Setting a Granite Monument

**P**LACE the base in position on the foundation by means of wood bars and rollers.

When it is in place put a piece of wedge lead, which is shipped with the stone, on each of the four corners of the base. Set the main block on the base by rolling it up an inclined plane of blocks and planks as shown in the illustration. The lead leaves a space of about one-eighth of an inch between the base and the main block. Make sure that you have the stones perfectly level and in perfect line when looking at it from all sides. In case there is a cap, it is then set in place, first putting small lead on the corners of the main block, just as you did on the four corners of the base.

Then cut a strip of wedge lead the right length, put the narrow edge into the joint between the base and the main block and drive it carefully and evenly into the joint. Use a wood mallet and a block of wood. Do not use an iron hammer, for it might damage the granite. Drive the wedge lead into the joints on all four sides. Trim the lead off with a knife or other sharp instrument.

Go over the lead again with the mallet and wood block, so as to seal all joints completely. This fills up the small spaces, removes all uneven spots in the lead, and prevents water from entering and freezing, thereby avoiding the possibility of any part of the stone shifting or cracking.

When the monument is in place and the wedge lead has been fitted to the joints, the monument should be well washed with soap and water. It is then complete and will stand firmly for generations.

### Setting a Marble Monument

**W**HEN erecting a Marble Monument as illustrated above, first move the base into position by means of wood bars and wood rollers, taking care that no metal touches the marble, for marble is very easily chipped or bruised. When the base is set, mix some of the cement which we ship with the stone, to a thick paste and spread it over the top and around the center. If dowels are to be used you will find holes already drilled in the marble and the dowels will be packed in one of the crates. The dowels are about one-half inch in diameter and several inches long. They fit into holes in the different sections of marble. Fill the dowel holes in the base and the main block partially with cement and place the dowels in the holes.

Now raise the main block into position by means of planks and rollers. Smaller stones can be lifted easily by one or more men. The cement will be forced up and around the dowels; when the cement hardens it holds the marble sections firmly together. When you set the main block be sure that it is in perfect line with the base.

Wipe off any cement that the weight of the upper stone squeezes out of the joints before the cement has a chance to set and become hard. Repeat these operations if other sections of marble are added. After the sections are all set, go over the entire stone and scrape off all surplus cement while it is easy to remove.

After the sections are all in place, wash the monument thoroughly with soap and water. Follow these suggestions carefully and you will have a monument which will remain erect permanently.

## Ordering Monuments at Ward's Is Easy

USE the special order blank inserted in this catalogue, or any plain sheet of paper you prefer. Write your full name and address; give street and number, or route and box, and postoffice; also shipping point if different from postoffice. Each family should order under one name only, preferably the head of the household. Give the Article Number of each item and the quantity you want. Print carefully all lettering you desire on the monument and specify the styles and sizes of letters wanted. Information about lettering is on Page 23. For Easy Payments use enclosed order blank.

**HOW TO SEND MONEY**—State the exact amount of money sent with your order. Send remittances in the form of postoffice or express money order, bank draft, or personal check. If cash, be sure to send by registered mail, securely folded in heavy paper.

**HOW TO RETURN GOODS**—Do not return any merchandise ordered from this catalogue until you have written us for shipping instructions. We will send you instructions promptly on receipt of your request.

### You Save Much More Than You Pay for Freight

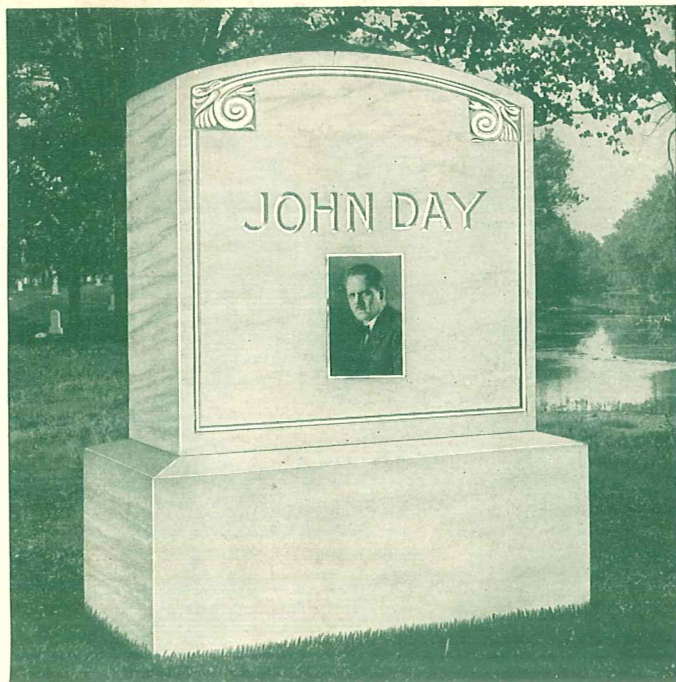
Remember you pay no more for freight on the stone you buy at Ward's than you would pay if you bought through a local man—unless he orders in carload lots. In other words you buy direct for yourself and pocket the savings, when you order from Ward's.

You can easily estimate the cost of shipping the stone you select. In the description of the stone we give you its shipping weight. In the list below you will find the freight rate per hundred pounds from the quarry to a city near your home.

**EXAMPLE:** If you live near Davenport, Ia., and you have selected a Granite stone weighing 1,260 pounds, it will be shipped from Central Illinois and the freight charges as shown below will be 27 cents per hundred pounds, making the total for freight about \$3.40.

If there is an agent at your station, do not send any money for freight. If there is no agent at your station, write us for the price of the monument you select, delivered to your town.

SHIPPED TO	Marble Per 100 Lbs. Shipped from Vermont	Gray Granite or Red Granite Per 100 Lbs. Shipped from Rutland, Vt., Elmwood, Ill. or Portland, Ore.	SHIPPED TO	Marble Per 100 Lbs. Shipped from Vermont	Gray Granite or Red Granite Per 100 Lbs. Shipped from Rutland, Vt., Elmwood, Ill. or Portland, Ore.	SHIPPED TO	Marble Per 100 Lbs. Shipped from Vermont	Gray Granite or Red Granite Per 100 Lbs. Shipped from Rutland, Vt., Elmwood, Ill. or Portland, Ore.
<b>ALABAMA</b>			<b>KANSAS</b>			<b>NORTH DAKOTA</b>		
Anniston.....	\$1.32	\$1.32	Dodge City.....	\$2.02	\$1.26	Bismarck.....	\$1.76	\$1.19
Birmingham.....	1.32	1.30	Great Bend.....	1.93	1.17	Dickinson.....	2.04	1.57
Huntsville.....	1.26	1.12	Salina.....	1.67	.91	Fargo.....	1.53	.91
Mobile.....	1.45	1.27	Scott City.....	2.02	1.26	Grand Forks.....	1.65	1.03
Montgomery.....	1.32	1.33	Topeka.....	1.43	.65	Granville.....	1.91	1.34
<b>ARIZONA</b>			Wichita.....	1.75	.99	<b>OHIO</b>		
Phoenix.....	3.00	2.18	<b>KENTUCKY</b>			Cincinnati.....	.61	.49
Prescott.....	3.00	2.18	Bowling Green.....	1.18	.98	Cleveland.....	.54	.56
Tucson.....	3.00	2.18	Frankfort.....	.90	.70	Columbus.....	.56	.53
<b>ARKANSAS</b>			Hopkinsville.....	1.23	.69	Lima.....	.56	.53
Ft. Smith.....	1.77	1.20	Louisville.....	.71	.51	Springfield.....	.58	.50
Helena.....	1.40	1.02	<b>LOUISIANA</b>			<b>OKLAHOMA</b>		
Hot Springs.....	1.82	1.17	Alexandria.....	1.99	1.37	Muskogee.....	1.77	1.06
Little Rock.....	1.62	1.12	Lake Charles.....	2.04	1.40	Oklahoma City.....	2.04	1.33
Paragould.....	1.62	.89	Monroe.....	1.90	1.30	<b>OREGON</b>		
Texarkana.....	1.98	1.28	New Orleans.....	1.45	1.25	Portland.....	3.38	....
<b>CALIFORNIA</b>			<b>MAINE</b>			Roseburg.....	3.38	.61
Fresno.....	3.38	1.06	Bangor.....	.40	.40	<b>PENNSYLVANIA</b>		
Los Angeles.....	3.38	1.11	Portland.....	.32	.32	Altoona.....	.48	.48
Maryville.....	3.38	.86	<b>MARYLAND</b>			Erie.....	.48	.48
San Francisco.....	3.38	.58	Baltimore.....	.47	.47	Philadelphia.....	.40	.40
<b>COLORADO</b>			<b>MASSACHUSETTS</b>			Pittsburgh.....	.48	.48
Denver.....	2.01	1.30	Boston.....	.31	.31	Wilkes Barre.....	.38	.38
Durango.....	3.07	2.25	Fitchburg.....	.31	.31	<b>RHODE ISLAND</b>		
Grand Junction.....	3.11	2.24	Lowell.....	.32	.32	Providence.....	.34	.34
Gunnison.....	3.00	2.14	<b>MICHIGAN</b>			<b>SOUTH CAROLINA</b>		
Leadville.....	2.73	2.03	Bessemer.....	.99	.43	Charleston.....	1.12	1.12
Trinidad.....	2.01	1.30	Cadillac.....	.75	.60	Columbia.....	1.12	1.12
<b>CONNECTICUT</b>			Detroit.....	.56	.54	Spartanburg.....	1.12	1.12
Hartford.....	.40	.40	Grand Rapids.....	.65	.54	<b>SOUTH DAKOTA</b>		
New Haven.....	.40	.40	Sault Ste. Marie.....	.82	.69	Aberdeen.....	1.47	.76
<b>DELAWARE</b>			<b>MINNESOTA</b>			Pierre.....	1.63	.92
Dover.....	.55	.55	Brainerd.....	1.38	.83	Sioux Falls.....	1.23	.63
Wilmington.....	.40	.40	Crookston.....	1.60	1.05	Yankton.....	1.31	.60
<b>DISTRICT OF COLUMBIA</b>			Duluth.....	.99	.53	<b>TENNESSEE</b>		
Washington.....	.52	.52	St. Paul.....	.86	.41	Chattanooga.....	1.26	1.12
<b>FLORIDA</b>			Winona.....	.99	.41	Jackson.....	1.34	.83
Jacksonville.....	1.18	1.18	Worthington.....	1.21	.49	Knoxville.....	1.20	1.12
Miami.....	1.77	1.77	<b>MISSISSIPPI</b>			Memphis.....	1.34	.90
Pensacola.....	1.45	1.45	Columbus.....	1.34	1.08	Nashville.....	1.26	.97
Tallahassee.....	1.31	1.31	Hattiesburg.....	1.40	1.21	Union City.....	1.34	.75
<b>GEORGIA</b>			Jackson.....	1.40	1.15	<b>TEXAS</b>		
Atlanta.....	1.26	1.26	Natchez.....	1.45	1.21	El Paso.....	2.16	1.98
Augusta.....	1.18	1.18	<b>MISSOURI</b>			Fort Worth.....	1.79	1.61
Macon.....	1.22	1.22	Jefferson City.....	1.18	.45	Galveston.....	.98	1.61
Savannah.....	1.18	1.18	Joplin.....	1.45	.68	San Antonio.....	1.71	1.61
Waycross.....	1.18	1.18	Kansas City.....	1.22	.60	<b>UTAH</b>		
<b>IDAHO</b>			St. Louis.....	.84	.40	Marysvale.....	3.56	2.04
Boise.....	3.00	1.09	Springfield.....	1.32	.56	Salt Lake City.....	2.94	1.42
Buhl.....	3.00	1.46	<b>MONTANA</b>			Thistle.....	2.95	1.42
Pocatello.....	2.95	1.42	Billings.....	2.66	1.85	<b>VERMONT</b>		
<b>ILLINOIS</b>			Butte.....	2.88	1.52	Bennington.....	.30	.30
Cairo.....	.86	.42	Glendive.....	2.21	1.59	Burlington.....	.31	.31
Joliet.....	.71	.31	Missoula.....	3.00	1.35	Montpelier.....	.36	.36
LaSalle.....	.79	.24	<b>NEBRASKA</b>			<b>VIRGINIA</b>		
Peoria.....	.79	.19	Beatrice.....	1.37	.61	Norfolk.....	.55	.55
Rock Island.....	.84	.26	Chadron.....	2.07	1.36	Richmond.....	.55	.55
Springfield.....	.81	.27	Grand Island.....	1.64	.95	Roanoke.....	.75	.75
<b>INDIANA</b>			Omaha.....	1.22	.60	<b>WASHINGTON</b>		
Elkhart.....	.67	.47	<b>NEVADA</b>			Seattle.....	3.38	.41
Evansville.....	.79	.45	Elko.....	2.87	1.67	Spokane.....	3.00	.84
Ft. Wayne.....	.63	.47	Reno.....	3.00	1.28	Walla Walla.....	3.00	.66
Indianapolis.....	.66	.45	<b>NEW HAMPSHIRE</b>			<b>WEST VIRGINIA</b>		
Logansport.....	.69	.44	Manchester.....	.32	.32	Belington.....	.55	.55
Richmond.....	.62	.48	<b>NEW JERSEY</b>			Charleston.....	.57	.57
South Bend.....	.67	.46	Newark.....	.40	.40	Wheeling.....	.48	.48
Terre Haute.....	.71	.42	Trenton.....	.40	.40	<b>WISCONSIN</b>		
<b>IOWA</b>			<b>NEW MEXICO</b>			Eau Claire.....	.99	.49
Council Bluffs.....	1.22	.53	Albuquerque.....	2.62	1.91	Fond du Lac.....	.96	.41
Davenport.....	.84	.27	Deming.....	2.70	2.42	Green Bay.....	.96	.41
Des Moines.....	1.05	.39	Tucuman.....	2.48	1.77	La Crosse.....	.96	.40
Ft. Dodge.....	1.11	.45	<b>NEW YORK</b>			Madison.....	.90	.37
Waterloo.....	.98	.39	Albany.....	.26	.26	Milwaukee.....	.71	.40
			Buffalo.....	.46	.46	Superior.....	.99	.49
			New York.....	.40	.40	<b>WYOMING</b>		
			Utica.....	.38	.38	Cheyenne.....	2.01	1.30
			<b>NORTH CAROLINA</b>			Lander.....	2.94	2.23
			Charlotte.....	.97	.97	Sheridan.....	2.66	2.04
			Wilmington.....	.89	.89	Rock Springs.....	2.86	2.15
				.97	.97			



# THE PORTRAIT ETERNAL

*Use It on the Monument  
or in the Home*

**T**HE reproduction of family portraits on porcelain is rapidly attaining great popularity. And with good reason. Portraits thus reproduced are permanent. Protected by a perfectly transparent, flinty-hard glaze, they never fade or become torn or rumpled. When soiled, a damp cloth will restore them to their original brightness. They are very attractive in the home, and their resistance to the weather permits them to be used on monuments without injury. We will have them mounted on your new monument at our workshops at small additional cost. See below.

## Everlasting—Beautiful on the Monument

One of these weather-resisting likenesses of the departed loved one, cemented to the stone above the grave, endows the resting place of the dead with a living personality. With the familiar face looking out at you, it seems as though with your visit there you have indeed paid the intended homage of respect and remembrance to one who has gone.

## Preserve the Likeness of Loved Ones

Your family portraits are the tangible symbols of the love you bear for those who are your own. Unlike paper likenesses which are fragile, easily mislaid and seldom before your eyes, these porcelain panels are permanent. By this comparatively recent process of photographic reproduction, the features are brought out with unusually lifelike distinctness if we have a good photograph from which to work.

## Your Choice of Three Appropriate Styles



Style B—Round

253 K 8993—Diameter of picture 3 inches... \$6.90  
253 K 8994—Diameter of picture 4 inches... 7.50  
253 K 8995—Diameter of picture 5 inches... 9.75



Style C—Rectangular

253 K 8996—Picture 3¼ by 4¼ inches... \$ 7.95  
253 K 8997—Picture 4 by 6 inches... 10.85  
253 K 8998—Picture 5 by 7 inches... 13.50



Style A—Oval

253 K 8990—Picture 2½ by 3½ inches... \$5.85  
253 K 8991—Picture 3¼ by 4¼ inches... 6.95  
253 K 8992—Picture 3¾ by 5 inches... 7.50

*Extra charge of \$3.00 for setting on Marble, and \$5.00 for setting on Granite*

## Beautifully Paneled for Home

Family portraits on glistening plaques or panel, and tastefully framed and grouped, add greatly to the "hominess" of the living room or parlor, whether of those you will never see again, or of living friends who are far away. You can bring out these lovely, porcelain portraits on your walls, into the room you occupy most, where all your family can seem to be always around you. They will retain their beauty unfaded. This costs so little and means so much to you. We do not furnish frames. Your local store can easily frame them. Shipping weight each, about 2 pounds. Figure parcel post charges from Chicago, Illinois.

## Mail Us Your Photograph Today

The time to have your treasured photographs reproduced is *NOW*. Next month or next year they may be lost or faded or destroyed. The photograph to be reproduced need not be extraordinarily sharp or clear. Even a "snapshot" can be so retouched and otherwise treated by our artists that a surprisingly lifelike reproduction can be made. Or one individual's photograph can be reproduced from a group picture. Send us your photographs and be assured that the results we obtain will be entirely satisfactory, and that the original will be returned to you unmarred.

**Montgomery Ward Co.**  
Satisfaction Guaranteed or Your Money Back

Chicago  
Portland

Kansas City  
Oakland

St. Paul  
Fort Worth

Baltimore  
Denver  
Albany